

October 2009

Phnum Kravanh District Data Book 2009

District Code Nr: 1504

Pursat Province

Table of Contents

List of Abbreviations	i
Glossary.....	ii
Preface	vi
Introduction	vii
SECTION A: GEOGRAPHY	1
1 Administration and Infrastructure.....	3
2 Land Use and Natural Resources.....	5
3 Geography	7
3.1 Land Area	7
3.2 Distances between Offices	7
SECTION B: DISTRICT PROFILE	9
1 General Information	11
1.1 Population of the District.....	11
1.2 Occupations	12
1.3 Property	14
2 Infrastructure and Economy.....	16
2.1 Roads in meters over 3 years.....	16
2.2 Sewerage Pipes in meters over 3 years.....	16
2.3 Drainage and Bridges	16
2.4 Services in the District	16
2.5 Agriculture.....	17
3 Social Aspects	29
3.1 Education	29
3.2 Health.....	36
3.3 Water and Sanitation	37
3.4 Vulnerable groups.....	42
3.5 Migration	44
4 Natural Resources and Environment (NRE).....	46
4.1 Families involved with NRE issues over 3 years	46
4.2 Percentage of Families involved with Natural Resource issues, by Commune, for 2008	46
4.3 Percentage Houses with access to Garbage collection and Families affected by environmental Pollution, by Commune, for 2008	46
4.4 Percentage Families using chemical Fertilizer and chemical Pesticides, by Commune, for 2008 ..	46
5 Administration and Security	47

5.1	Birth Registration across 3 years.....	47
5.2	Number of unregistered Infants born in 2008, by Commune	47
5.3	Registered criminal Cases over 3 years	47
5.4	Registered criminal Cases per 10,000 people, by Commune, for 2008.....	47
5.5	Number of registered Land Disputes, by Commune, in 2008	47
6	Gender	48
6.1	Registered Domestic Violence over 3 years.....	48
6.2	Percentage of registered cases of Families experiencing domestic Violence, by Commune, in 2008	48
6.3	Women's involvement over 3 years.....	48
6.4	Percentage of Female Participants in Civil Society and of 18-60 year women with uncertain Jobs, by Commune, in 2008	49
6.5	Female-headed Households over 3 years.....	49
6.6	Percentage female-headed Households and with Children of less than 5 years old, by Commune, in 2008	49
7	Indigenous People in the District	50
7.1	Ethnic Minorities in the District over 3 years.....	50
7.2	Other Minorities in the District over 3 years.....	50
	SECTION C: PLANS AND PROJECTS	51
8	Priorities and Plans	53
8.1	Priorities of Commune Councils for 2009 in the District by Sector	53
8.2	Temporary Agreements by Commune, for 2009	59
8.3	Outputs, estimated and actual costs of C/S Fund Projects between 2005 and 2008, by Commune	71
8.4	Total Expenditure on C/S Fund Projects by sector and commune between 2005 and 2008.....	72
8.5	Actual 2009 C/S Fund projects by Commune	73
9	District level Projects from 2006 to 2009	74
9.1	District Initiative Infrastructure Projects from 2006 to 2009	74
9.2	District Initiative Service Projects from 2006 to 2009	75
9.3	Inter Commune Council Projects in 2008 and 2009	75
9.4	Other Projects in 2008 and 2009	76
	SECTION D: SERVICES AND ORGANIZATIONS	77
10	Infrastructure.....	79
10.1	Length of and Expenditure on Roads in 2008, by District	79
10.2	Scale of and Expenditure on Irrigation in 2008, by District.....	79
10.3	Power Supply in 2008, by District	80
11	Health Facilities.....	81

11.1 Health Facilities in the Province, by Operational District.....	81
11.2 Health Facilities and Staff in the province, by Operational District.....	81
11.3 Deliveries in 2007 in the Province, by Operational District.....	83
12 Education	84
12.1 Schools, Classes, Students, Staff, for for all levels, for 2007/2008 by District.....	84
12.2 Characteristics of Schools and School Principals for 2007/2008 by Commune	84
12.3 Enrolment by Level of Education, 2006/2007 by Commune	85
12.4 Enrolment by Level of Education, 2007/2008 by Commune	85
12.5 Aspects of Enrolment for 2007/2008 by Commune.....	85
12.6 School Buildings for all schools in the District for 2007/2008, by Commune	86
12.7 Conditions of Classrooms and Existence of Separate School Office and Library, by Commune	86
12.8 Community Participation and Financing across all schools in the District for 2007/2008 by Commune	86
12.9 Percentage Student Flow Rates and Graduation by level 2006/2007, by Commune	87
13 Staff and Resources at the District	88
13.1 District Councilors elected in 2009	88
13.2 Committees of the Council.....	88
13.3 Board of Governors.....	89
13.4 Offices under Sala Krong, Sala Srok and Sala Khan	89
13.5 Municipality/District/Khan line offices.....	89
13.6 Properties and Equipment of District Administration	90
13.7 Registered Revenue of the District Administration in 2008	90
13.8 Services in the District	91
13.9 Civil Society Organizations active in the District.....	91
13.10 Private Sector Organizations.....	92
SECTION E: POVERTY DATA	93
14 Data on Poverty	95
14.1 Predicted Poverty Rates for 2009, by commune	95
14.2 Poverty data from survey.....	95

List of Abbreviations

#	Number
AGR	Agriculture
BR	Birth Registration
C. Pilot	Piloted Commune
C/S	Commune / Sangkat
CBO	Community-Based Organization
CDB	Commune Database
CDPD	Commune Development and Planning Database
CIP	Commune Investment plan
CLTS	Community Led-Total Sanitation
Comm.	Commune
Com Cov	Commune Covered
CPA	Complementary Package of Activities
CPS	Community Preschool
CCWC	Commune Committees for Women and Children
DANIDA	Danish International Development Agency
DDLG	Democratic Development and Local Governance Project (EC-UNDP)
DFID	Department For International Development (UK)
DIP	District Initiative Project
DIS	District Information System
District PDRD	District Office of Rural Development
District WP	District Work Plan
DIW	District Integration Workshop
DoLA	Department of Local Administration
Dr	Doctor
DWRM	District Office of Water Resource and Meterology
ECD	Early Childhood education (part of PE)
EMIS	Education Management Information System
Event IC	Celebration of International Days
FDH	Former District Hospital
GTZ	German Society for Technical Cooperation (Gesellschaft für Technische Zusammenarbeit GmbH)
Ha	Hectare
HC	Health Center
HC (NB)	Health Center (no building)
HH	Headed Household
HSI	Intervention for Health
HP	Health Post
HW	Hand Washing
ICC	Inter Commune Council
IFAD	International Fund for Agricultural Development
IND	Industry
Inter-commune	Inter-Commune Project Management Committee or Inter-commune project
IO	International Organization
LASED	Land Allocation for Socio-Economic Development
LGCR	Local Governance for Children's Rights
M&E	Monitoring and Evaluation
MA	Medical Assistant
MoEYS	Ministry of Education, Youth and Sports
MoH	Ministry of Health

MoP	Ministry of Planning
MPA	Minimum Package of Activities
MW1	Primary Midwives
MW2	Secondary Midwives
n/a	Not available
NCD	National Contracts Database
NCDD	National Committee for Sub-National Democratic Development
NGO	Non-Governmental Organization
NRML	Natural Resources Management and Livelihood
NU1	Primary Nurse
NU2	Secondary Nurse
OD	Operational District
ODF	Open Defecation Free
Ope. Costs	Operational Costs
Others	Other Staff
PBW	Public Works
PDoEYS	Provincial Department of Education, Youth and Sport
PDRD	Provincial Department of Rural Development
PDWRM	Provincial Department of Water Resource and Meteorology
PE	Parenting Education
PHAST	Participatory Hygiene and Sanitation Transformation
PHD	Provincial Health Department
PID	Project Information Database
PMC	Project Management Committee
Pop 04-05	Population Covered 2004 or 2005
PSDD	Project to Support Democratic Development through Decentralization and Deconcentration
RRD	Rural Road Development
RH	Referral Hospital
RILGP	Rural Investment and Local Governance Project
RPRP	Rural Poverty Reduction Program
RuLIP	Rural Livelihoods Improvement Program
SIDA	Swedish International Development Cooperation Agency
SPPA	Senior Provincial Program Advisor
TBA	Traditional Birth Attendant
UNDP	United Nations Development Project
UNICEF	United Nations Children's Fund
Vil	Village
Vil Cov	Village Covered
VIL-HC	Distance from Village to Health Center
WASH	Water, Sanitation and Hygiene
WRM	Water Resource and Meteorology

Glossary

C/S Fund: The Commune/Sangkat Fund is established and managed by the Government of Cambodia to provide financial support for development projects and administrative costs of Commune/Sangkat Councils. The amount is determined as a percentage of the National Budget (for 2009: 2.8% over the 2008 budget) and is expected to increase gradually over the years. The total 2009 budget under this fund is \$ 27,643,902 (of which \$ 19,272,170 is for Development Projects and \$ 8,371,731 for Administration). Under the Rural Investment and Local Governance Project the World Bank currently reimburses the costs of development projects if these meet the Bank's criteria.

CDB: the Commune Data Base is a national database, compiled by the Ministry of Planning, on the basis of detailed questionnaires, completed at village and commune level, which are then sent to the Departments of Planning for data entry. The most recent round of data collection took place at the end of 2008 (and is reflected in the District Data Books). Commune, District and Provincial Profiles can be generated from this database and should be available from provincial Departments of Planning.

CDPD: the Commune Development and Planning Database is a database maintained by Departments of Planning and Ministry of Planning, recording proposed activities as determined and prioritized by Commune and Sangkat Councils; the Temporary Agreements between these councils and supporting agencies, as decided at District Integration Workshops and details on projects that actually take place at commune, district and provincial levels.

CIP: The Commune Investment Plan is a rolling three-year plan, developed and decided by the Commune or Sangkat Council. It sets priorities and identifies the projects proposed for the years to come.

Commune and Sangkat (C/S): the Communes (in rural areas) and Sangkats (in urban areas) are the lowest and smallest units of local government. Councils are elected directly, once in five years, for the 1417 Communes and 204 Sangkats. In the C/S there are 14,119 villages, which have Village Chiefs, but don't constitute a formal level of local government.

DIP: the District Initiative Project is jointly supported by the MDLF (Multi-Donor Livelihood Facility (supporting the NRM&L Program)) and PSDD. In 2009 it covers 106 districts, 60% of the total in the country, with a budget of \$ 3.2 million. It is focused on capacity development in planning, democratic development, public competitive procurement, financial management and service delivery.

DIS: The District Information System is a national database maintained by NCDD, recording resources, staff, revenue, infrastructure and equipment available in the 193 Districts and Khans throughout the country. The last update took place in July 2009.

District, Municipality and Khan constitutes the third level of Government in Cambodia. There are 159 rural Districts, 26 Municipalities and 8 Khans of Phnom Penh Capital. They all have Councils which were, for the first time, elected in May 2009, by the Commune/Sangkat Councilors. These councils have a mandate for 5 years.

DIW: District Integration Workshops are held between July and October, to bring Commune/Sangkat Councils, looking for support for their projects, together with the governmental and non-governmental agencies that may provide support.

ICC: Inter Communes Council projects are executed in 10 provinces under the Democratic and Decentralized Local Governance Project (DDLG). This five year project (2006-2010) is executed by Ministry of Interior and funded by the European Commission and UNDP. The project focuses on improving dialogue partnership and accountability; create a network of Commune Councils at the provincial and national level and support and contribute to local area development for poverty reduction. The work under the ICC component supports investments and services formulated through inter-commune dialogue and planning.

MEDiCAM: A non-profit and non-partisan membership organization for NGOs active in Cambodia's health sector. It is the primary networking agency for health-related NGOs.

NCDD: the National Committee for sub-National Democratic Development is the inter-ministerial body charged with the implementation of the Organic Law (a key legislative document, adopted in 2008, outlining the envisaged decentralization). NCDD also channels substantial financial assistance by a number of Development Partners, to projects and programs at various levels. This amounted to over \$ 91 million in 2008. More information at: www.ncdd.gov.kh. This website also provides access to reports, manuals, legal documents, details on projects and more.

OD: the Operational Districts are the districts as defined and used by the Ministry of Health. These do not coincide with the 193 (Administrative) Districts and Khans, as used by all other RGC agencies. The Operational Districts are usually larger, and so there are 77 Operational Districts against 193 administrative Districts and Khans. However they do fit within the boundaries of administrative provinces.

PID: The Project Information Database is the database maintained by NCDD at national and sub national level, to follow all aspects of projects by Commune and Sangkat Councils, including the C/S Fund projects

Provincial Investment Fund (PIF)

The Provincial Investment Fund is allocated to all Provinces and Municipalities according to a population based formula. Part of the fund is earmarked for support to planning activities of the Provincial / Municipal Department of Planning; and to gender mainstreaming activities of the Provincial Department of Women's Affairs. The remaining "un-earmarked PIF" is allocated by PRDC to sectoral technical departments against established criteria and in response to proposals with prioritisation taking into account: priorities formulated by the CS Councils and aggregated by District into District Priority Activities Matrices (DPAM); alignment with national planning and poverty alleviation criteria, complementarity with other planned activities; and performance of the Department concerned in implementation of activities in previous years. With this provisional allocation, the Department then programs activities through the District Integration Process. Finally, the agreed activities, plus support costs amounting to no more than 25% of the total, are included in a sub-contract signed between PRDC and the Department, pursuant to the overall PSDD contract signed between NCDD and PRDC. Total budget has been around \$ 2 million per year.

Province: the 23 Provinces and Phnom Penh Capital City represent the 2nd layer of government. They vary in size, from very small, like Kep (approx. 36,000 people) and Pailin (approx. 70,000 people), or large but with small populations, like Mondulkiri (over 60,000 people), and Ratanakiri (over 153,000) to densely populated and large, like Kampong Cham (over 1.7 million people) and Kandal (approx. 1.4 Million people).

PSDD: the Project to Support Democratic Development through Decentralization and Deconcentration is funded by DFID (UK), SIDA (Sweden) and UNDP and runs from 2006 till the end of 2010 (including a one year extension). Annual budgets range from \$ 11 million to over \$ 18 million. The project provides core technical support to NCDD and to the provinces, financial support to the C/S Fund, District Initiative, Provincial Investment Fund and capacity building support through training, studies and advisory services.

RILGP: The Rural Investment and Local Governance Project is a World Bank funded project that provides substantial support to C/S Fund projects and to developing the required infrastructure, policies, systems and skills. It started in 2003 with a Loan for \$ 22 million for 2003-2007 and was then extended with a Grant of \$ 36 million for the period of 2007-2010. Discussions about a possible RILGP 2 are taking place between RGC and the World Bank.

RPRP: the Rural Poverty Reduction Project is a seven year project from 2004 till 2010, funded by IFAD and UNDP and implemented through the Ministry of Agriculture, Forestry and Fishery, supported by the Ministry of Interior and facilitated by NCDD. The project is active in the provinces Prey Veng and Svay Rieng and focuses on 120,600 households below poverty line. The objective is poverty reduction with the active participation of the poor through improved livelihoods, Strengthened capacity, Sustainable farming systems and natural resource management, new and/or rehabilitated infrastructure development, increase accessibly to technology, services and markets for their economic and social development.

RULIP: the Rural Livelihoods Improvement Project is implemented by the Ministry of Agriculture Forestry and Fisheries (MAFF)' Project Support Unit- PSU, with the NCDD playing the role of cooperating agency. Funded by IFAD and UNDP, the project will run till 2014. The target group consists of poor households who have little or even no land, few livestock or other assets and often many dependents. The main goal of the project is to directly or indirectly improve the livelihood systems, food security and incomes of a total of 33,900 rural poor, ethnic minority and female headed households in targeted village of Kratie, Preah Vihear and Ratanakiri provinces in a sustainable manner.

Seth Koma: The UNICEF funded Seth Koma program focuses on measurable action for children and women. During 2006 -2010 it is implemented in six provinces. Government and UNICEF pursue a set of inter-related goals, addressing critical stages of the life cycle of the child: a) Mothers have safe pregnancies and deliveries and healthy newborns; b) best possible start in life of infant; c) Children enter schools at the right age of six years; d) Children are protected from exploitation, abuse, violence, discrimination and other risks; and e) Youth and adolescents acquire life skills, express their views, participate in the decisions.

Preface

The Government of Cambodia attaches great importance to optimal use of scarce resources and to participatory planning and management at all levels. The Organic Law which was adopted in 2008 provides the legal context for further steps towards improving and decentralizing planning, management and monitoring, and towards greater accountability and transparency of institutions at sub-national levels.

The Government has established elected Councils at the sub-national levels, and we will progressively give them the responsibilities, together with the human and financial resources, to deliver a wide range of public services. They will be more democratic, more efficient, more transparent and accountable, better at addressing gender and other inequalities, and at fighting corruption. We recognize that development does not come from government alone; it needs the involvement of citizens, civil society and the private sector, and the new system will facilitate this.

A central element in this process is the availability of information on any aspect of development to all concerned parties. The newly elected Councillors at District and Khan level, line departments operating at these levels, but also NGOs, Development Partners, Commune Councillors and citizens throughout Cambodia need information on problems and requirements, resources and opportunities, services and agencies, plans and projects. They will need such information to better understand the present situation, set targets for the future, monitor progress, know what others are doing and to apply resources wisely and this is the reason the District Data books will be so valuable.

The District Data Books are a major step towards full transparency and towards informed planning and decision-making. They provide all available data at District, Khan, Commune and Sangkat level in easily accessible formats, in Khmer and English, through over 16,000 printed copies, CD-ROMs and the NCDD website.

This is the first time in Cambodia (and possibly in South East Asia) that such detailed information is made so widely available and NCDD should be commended for the hard work that has gone into this. We also thank the Ministry of Planning, which provided the detailed data of the Commune Data Base, the sectoral ministries and provincial authorities who contributed data and the Development Partners who provided financial support.

It is our sincere hope that the publication of the District Data Books will strengthen capacities, especially at district levels, for evidence-based development planning. We also hope that this information will deepen the understanding among Ministries, Provincial Authorities, Development Partners, NGOs and research agencies of the realities at commune and district levels.

We call upon all to use and distribute this information, complement or correct where appropriate and to contribute new data in the years to come.

Sar KHENG

Deputy Prime Minister, Minister of Interior and Chairman of NCDD

Introduction

Purpose

The purpose of the District Data Books is to bring together information on any aspect of life and development of Districts, Khans, Communes and Sangkat, together and make this widely available. The primary targets are the newly elected District Councilors, district level line departments, provincial agencies, Development Partners and NGOs operating at this level. They need detailed knowledge on current living conditions, natural resources, infrastructure, agriculture and other economic activities, current service levels, past and planned projects and available resources.

While much information exists on many of the above aspects, it is often hard to access that information and much is lost to reports, databases and statistics that are not widely shared. Data are often only available in one language and often out-of-date, and many reports cover only one sector or region.

We found that these problems are especially acute at the district level. Now that Districts are becoming a much more significant level of local government and development planning, there is an urgent need for wide-ranging data to be used for setting base-lines, planning and prioritizing, monitoring and learning.

Approach

We have attempted to identify and compile all available statistics, reports, maps and other data at district and/or commune level. From this we have selected information that is available for all or most districts, reasonably reliable and up-to-date, sufficiently detailed and of possible interest to development planners, decision makers, agencies and citizens.

The major sources of the information in these District Data Books are:

- a) The Commune Data Base information over the years 2006 to 2009 (the most recent data were collected late last 2008), as compiled by the Ministry of Planning
- b) Detailed information directly collected from the Ministry of Health, the Ministry of Education, Youth and Sports and (for maps) the Ministry of Land Management, Urban Planning and Construction
- c) The Project Information Database (PID) at NCDD (up-to-date)
- d) The Commune Development and Planning Database (CDPD) (up to date)
- e) The District Information System (DIS) (updated per Mid 2009)
- f) Direct data collection at provincial and district level on private sector, irrigation, roads, and electricity, through provincial agencies
- g) Medical data collected from MEDiCAM
- h) The ID Poor Project – for poverty data on a number of provinces and districts
- i) NCDD's work on predictive poverty rates
- j) Specific projects for outputs, plans and budgets (Seth Koma, RILGP, RPRP and ICC)

Limitations of the data

We are fully aware that the data we collected are not always complete, consistent or correct. While we have rejected information that was wrong or very incomplete, we decided not to aim for statistical and scientific perfection, but to include information that is useful, relevant

and comprehensive. We also accepted different sources for the same data as this may encourage discussion on the quality of the respective data.

We strongly encourage anyone who notes errors or incompleteness in these data to contact us and to share their data. We hope that the next round of producing such District Data Books can draw on wider sources and more complete data.

We encourage the District Administrations, who receive these data also in digital format, not only to use these for their planning and monitoring, but also to start correcting and updating these data and to share new data with NCDD for future use.

Contents

The information in the following pages is organized in five sections:

- a) **Geographical data:** this section provides maps on infrastructure and administration and on land use and natural resources management. These maps are also provided in large format to all Districts and Khans.
- b) **District Profile:** this presents wide ranging data, covering 2006 – 2009, at district and commune level, extracted from the Commune Data Base, but edited for better understanding.
- c) **Plans and Projects:** this section presents development priorities determined by Commune and Sangkat Councils, Temporary Agreements, outputs and expenditure of major projects at Commune and District level over 2006 – 2008 and plans and budgets for 2009.
- d) **Services and Organizations:** this section provides details on key infrastructure (roads, electricity, irrigation systems) and services in health and education at district and commune level. It also provides an inventory of resources at the District Administration, NGOs operating in the district and private sector agencies active in the district.
- e) **Poverty Data:** this section provides predicted poverty rates for 2009 for all districts and communes and detailed poverty data compiled and processed by the ID Poor project for those that have been covered by this project.

The future

It is our hope that this is the start of a longer-term process. We hope that a next edition of these District Data Books will offer more comprehensive, correct and up-to-date information. We hope that the District Administrations will not only start using this information, but also improve and update it. For this they are all provided with the full data set in digital format.

We invite agencies, projects and experts to send reports, statistics and maps that could be used for a next version to us and we invite all users of the District Data Books to inform us about errors, updates and inconsistencies. Please contact us through info@ncdd.gov.kh

We now invite you to browse through this data book. You may open this randomly or use the table of contents and go to the aspects that have your special interest.

We hope that you will be informed, surprised and assisted. We hope, above all, that this information will lead to a deeper understanding of causes and effects of poverty, to purposeful decisions on how to tackle those causes and to greater transparency in using scarce resources for the benefit of all.

Martin de Graaf
Program Advisor, PSDD/NCD

SECTION A: GEOGRAPHY

1 Administration and Infrastructure

Please see separate folder containing A3 maps.

2 Land Use and Natural Resources

Please see separate folder containing A3 maps

3 Geography

3.1 Land Area

Total Land Area (ha)	Forest Land Area (ha)		Cultivation Land Area (ha)	Construction Land Area (ha)	Other Land Area (ha)
	Total	Flooded Forest Area			
374390	353338	0	14137	6915	0

3.2 Distances between Offices

Location	Distance (Km)
From District Office to C/S Office of Bak Chenhchien	17
From District Office to C/S Office of Leach	0.8
From District Office to C/S Office of Phteah Rung	15
From District Office to C/S Office of Prongil	8
From District Office to C/S Office of Rokat	1.5
From District Office to C/S Office of Santreae	2
From District Office to C/S Office of Samraong	5

SECTION B: DISTRICT PROFILE¹

¹ All data in this section come from the Commune Database (CDB) unless otherwise specified. These include primarily new CDB data, collected late 2008, and some data from earlier years. Please note that percentages are rounded to the nearest whole number.

1 General Information

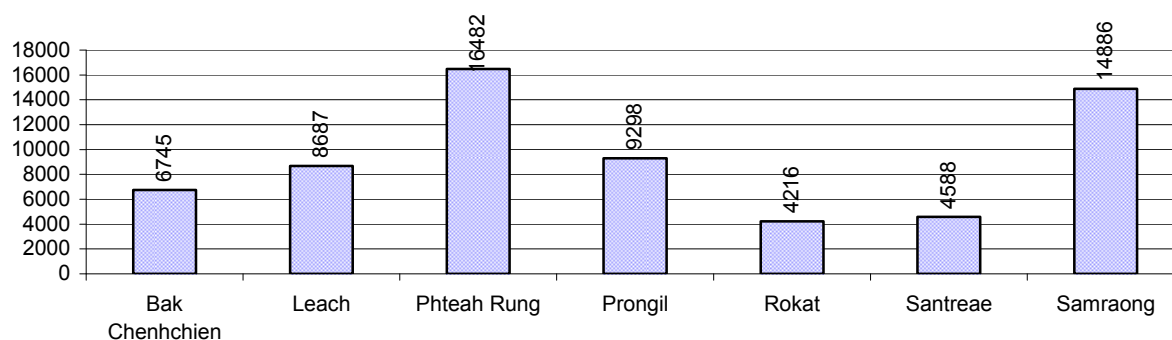
1.1 Population of the District

1.1.1 Total Population

Number of families	2005	2006	2007	2008
Total number of families	11,170 families	11,513 families	11,705 families	12,255 families
Increase (+)/Decrease (-) in nr of families		3%	2%	5%
Total population	58,195 pers	61,876 pers	62,543 pers	64,902 pers
Increase (+)/Decrease (-) in nr of people		6%	1%	4%
Number of female Headed Households (HH)	1,823 families	1,785 families	1,904 families	1,874 families

Note: Percentages of population and increase/decrease are calculated on basis of the previous year. A negative sign in front of the percentage indicates a decrease in population.

1.1.2 Population, by Commune, in 2008



1.1.3 Population, by Age Group, over 3 years

Population by age group	2006	2007	2008	
	%	%	%	Number
Age 0-5 years (as percentage of the population)	16%	15%	16%	10,264 persons
Male 0-5 yrs	48%	47%	48%	4,884 persons
Female 0-5 yrs	52%	53%	52%	5,380 persons
Age 6-17 (as percentage of the population)	31%	31%	33%	21,589 persons
Male 6-17 yrs	49%	48%	52%	11,133 persons
Female 6-17 yrs	51%	52%	48%	10,456 persons
Age 18-60 (as percentage of the population)	47%	47%	45%	29,316 persons
Male 18-60 yrs	47%	47%	48%	13,971 persons
Female 18-60 yrs	53%	53%	52%	15,345 persons
Age 61 above (as percentage of the population)	6%	6%	6%	3,733 persons
Male 61	47%	46%	47%	1,757 persons
Female 61	53%	54%	53%	1,976 persons

Note: The overall percentage for each age group is calculated on the basis of the total population. The gender distribution of each group is calculated on the basis of the population within that particular age group.

1.2 Occupations

1.2.1 Percentage of families with a particular Occupation over 3 years

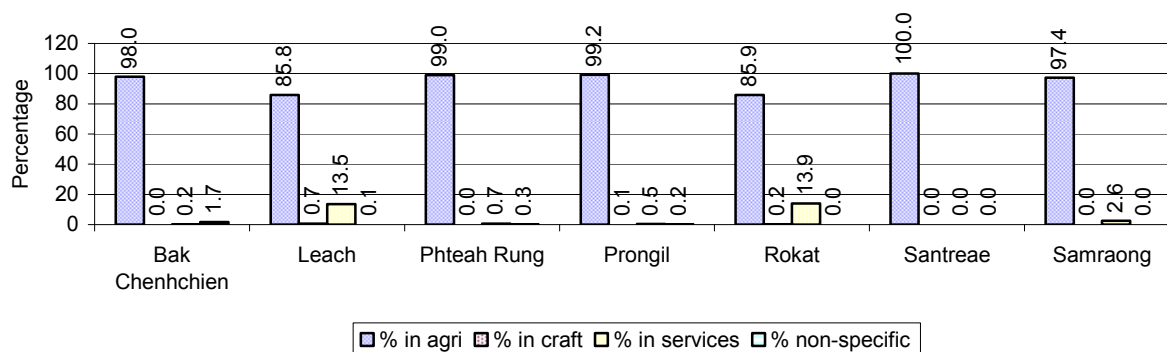
This table shows the percentage of the population who have a particular occupation (job), for example the percentage of the population in the district who are rice farmers, furniture crafter, trader, etc.

Description	2006	2007	2008	
	%	%	%	Number
Families whose main occupation is agriculture	95%	96%	96%	11,760 Families
Families whose primary occupation is rice farming	81%	92%	92%	11,280 Families
Families whose primary occupation is cultivating long-term crops	1%	1%	1%	134 Families
Families whose primary occupation is cultivating short-term crops	5%	1%	1%	117 Families
Families whose primary occupation is cultivating vegetable	4%	1%	1%	153 Families
Families whose primary occupation is fisherman	0%	0%	0%	0 Families
Families whose primary occupation is livestock farmer	2%	0%	0%	42 Families
Families whose primary occupation is NTFP collection	1%	0%	0%	34 Families
Families whose main occupation is craft work	0%	0%	0%	15 Families
Families, whose main occupation is in furniture craft, wooden, rattan, vine, bamboo	0%	0%	0%	9 Families
Families whose main occupation is in metal, aluminum, glass goods production	0%	0%	0%	0 Families
Families whose main occupation is food production	0%	0%	0%	0 Families
Families whose main occupation is tire, plastics and rubber goods production	0%	0%	0%	0 Families
Families whose main occupation is textile, clothing goods production	0%	0%	0%	1 Families
Families whose main occupation is in other production, not listed above	0%	0%	0%	5 Families
Families whose main occupation is services	4%	2%	4%	444 Families
Families whose main occupation is trade	3%	1%	2%	212 Families
Families whose main occupation is repair	0%	0%	1%	87 Families
Families whose main occupation is providing transport services	0%	1%	0%	25 Families
Families whose main occupation is providing other services	1%	0%	1%	120 Families
Families whose main occupation is not clear (or multi)	1%	3%	0%	36 Families

Note: The occupation percentages are calculated on the basis of the total number of families.

1.2.2 Percentage Families that work in one of four occupational sectors, by Commune in 2008

This table indicates the percentage of families involved in one of four occupation types: agriculture, craft, services or non-specific (other). Please note agriculture includes forestry activities such as cutting down trees and gathering gum from the trees.



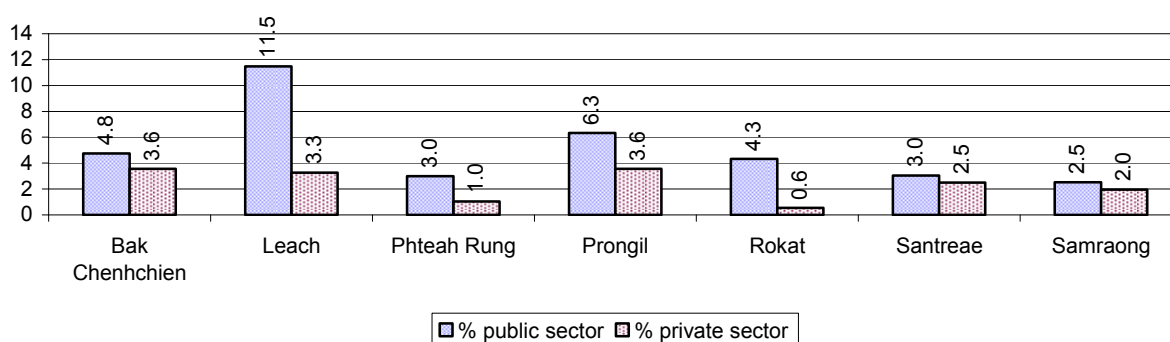
Note: Calculated on the basis of the total number of families within a commune.

1.2.3 Percentage of Families with public Sector, private Sector or uncertain Jobs, over 3 years

Description	2006	2007	2008	
	%	%	%	Number
Families that have a family member who is a government official, staff or worker	4%	5%	5%	594 families
Families that have a family member who is a private sector staff or worker	2%	3%	2%	278 families
Number of people aged 18-60 with uncertain/irregular jobs	4%	10%	7%	1,953 persons

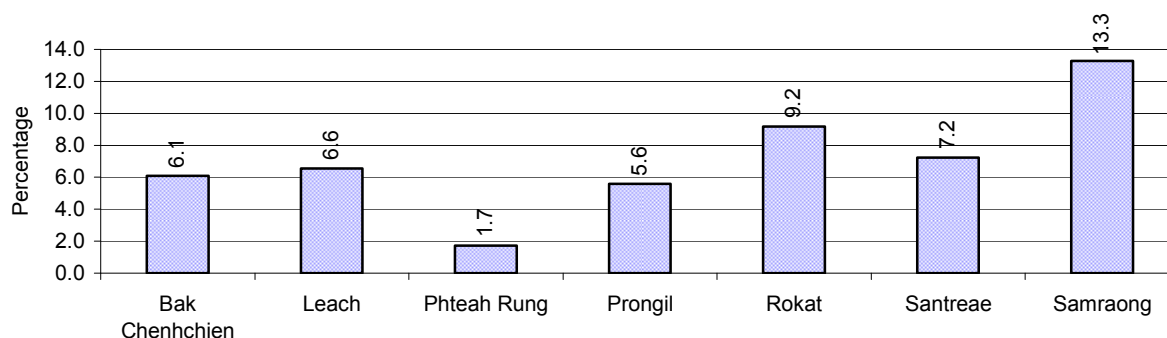
Note: In the first two rows percentages are calculated on the basis of the total number of families. In the third row the percentage is calculated on the basis of the total number of people aged 18-60 years.

1.2.4 Percentage of Families with public or private Sector Jobs, by Commune in 2008



Note: Calculated on the basis of the total number of families in the commune

1.2.5 Percentage of People aged 18-60 years with uncertain/irregular Jobs, by Commune, in 2008.



1.3 Property

1.3.1 Housing types and facilities over 3 years

This table shows the percentage of people living in a certain type of house. It also indicates how many houses have electricity or battery powered lights and how many have TV.

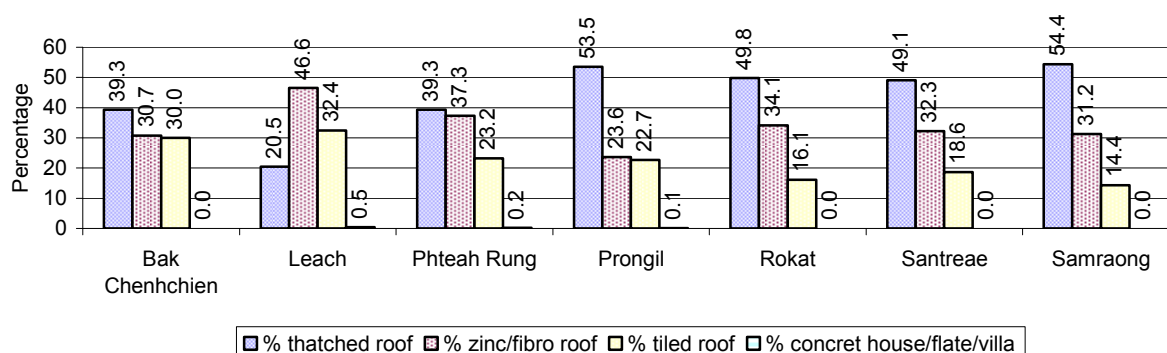
House Type	2006 %	2007 %	2008	
			%	Number
House with thatched roof	50 %	47 %	44 %	5,208 houses
House with zinc/fibro roof	27 %	29 %	34 %	4,033 houses
House with tiled roof	22 %	23 %	22 %	2,673 houses
Flats/apartments (with many families living)	0 %	0 %	0 %	1 houses
Concrete house or flat (with one family living)	0 %	0 %	0 %	16 houses
Villa house	0 %	0 %	0 %	0 houses
Houses with electricity	7 %	10 %	10 %	1,146 houses
Houses with battery light	25 %	30 %	37 %	4,441 houses
Houses with TV	31 %	37 %	46 %	5,453 houses

Note: Calculated against the total number of houses

1.3.2 Families living on public Land or without a permanent House

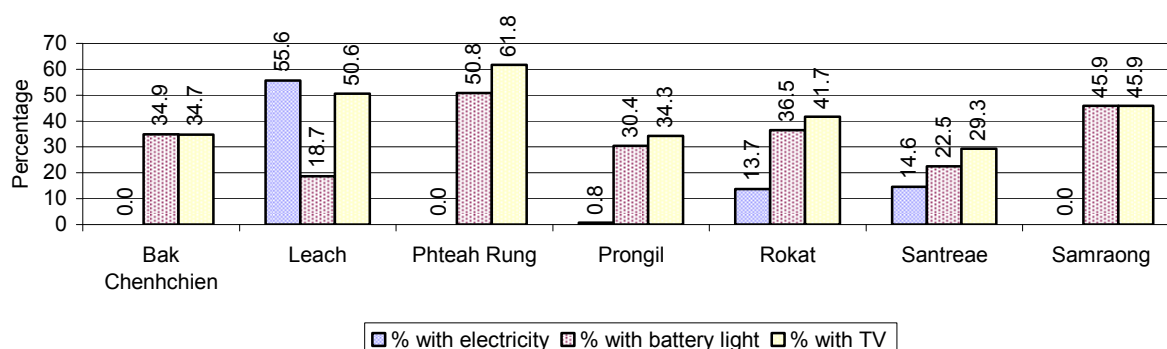
Living situation	2006	2007	2008
Families living in a house on public land	93 families	61 families	90 families
People, without permanent housing	37 person(s)	22 person(s)	30 person(s)

1.3.3 Percentage of Population living in a particular type of House, by Commune, in 2008



Note: Calculated against the total number of houses in each commune

1.3.4 Percentage of Houses with Electricity, Battery Lights and/or TVs, by Commune, in 2008



Note: Calculated against the total number of houses in each commune

1.3.5 Types of Vehicles and their ratio to Families across 3 years

This table shows the number of families per vehicle in the district. The last column shows the total number of each type of vehicle in the district for 2008.

Description	2006 ratio	2007 ratio	2008	
			Ratio	Number
Bicycle and bicycle with trailer	2	1	2	7,984
Ox-carts and horse-carts	2	2	2	6,013
Motorbike/with trailer	6	4	4	3,104
Motor tri-cycle	N/A	N/A	6,128	2
Large Transportation				
Total number of cars/trucks	110	84	83	148
Locally made vehicles	886	616	438	28
Trucks for goods transport	320	230	245	50
Buses/mini buses for passengers	959	585	1,114	11
Family cars	262	239	208	59
Agriculture machinery				
Tractors used for plowing	1,047	616	721	17
Power-tillage used for plowing	83	68	51	238
Other type of machinery				
Other type of machinery	3,838	1,171	4,085	3
Water transportation				
Row boats	71	81	93	132
Total number of motor boats	11,513	5,853	12,255	1
Motor boats used for fishing	N/A	11,705	N/A	0
Motor boats used for passengers	11,513	11,705	12,255	1
Motor boats used for goods transporting	N/A	N/A	N/A	0

Note: Ratio of families to a particular type of vehicle is the result of the total number of families divided by total number of that type of vehicle. Other types of vehicles, such as bulldozer, excavator, rollers etc. are not listed.

2 Infrastructure and Economy

2.1 Roads in meters over 3 years

Description	2006	2007	2008
Bituminous road	0 m	0 m	0 m
DBST, Macadam road	0 m	0 m	0 m
Concrete road	0 m	0 m	0 m
Laterite road	72,089 m	69,958 m	66,341 m
Constructed earth road	22,744 m	29,350 m	23,978 m
Un-constructed earth road	39,777 m	67,032 m	65,440 m

2.2 Sewerage Pipes in meters over 3 years

Description	Sewage pipe length		
	2006	2007	2008
Total length of sewage pipe, diameter 30-50 cm	0 m	162 m	0 m
Length of newly constructed sewage pipe, diameter 30-50 cm	0 m	0 m	0 m
Length of sewage pipe, diameter 30-50 cm needs repair/rehabilitation	0 m	0 m	0 m
Total length of sewage pipe, diameter of pipe 60-100 cm	0 m	180 m	0 m
Length of newly constructed sewage pipe, diameter 60-100 cm	0 m	72 m	0 m
Length of sewage pipe, diameter 60-100 cm needs repair/rehabilitation	0 m	36 m	0 m
Sewage pipe, diameter of pipe over 100 cm	0 m	6 m	0 m
Length of newly constructed sewage pipe, diameter over 100 cm	0 m	0 m	0 m
Length of sewage pipe, diameter over 100 cm needs repair/rehabilitation	0 m	0 m	0 m

2.3 Drainage and Bridges

Construction Type	2006		2007		2008	
	place(s)	Length	place(s)	Length	place(s)	Length
Single pipe culvert	199	837m	149	741 m	109	470 m
Double-pipe culvert	17	84m	14	74 m	17	91 m
Box pipe culvert	6	22m	6	132m	5	22 m
Wooden bridge	18	334m	18	306m	18	304 m
Concrete bridge	6	26m	1	5m	1	4 m
Bale bridge	1	138m	1	52m	2	190 m
Spillway construction	0	0m	2	5m	2	5 m

2.4 Services in the District

Descriptions	Number of places by year		
	2006	2007	2008
Public			
Electricity generating stations	1	1	1
Health clinics	0	2	0
Private			
Bicycle and motorcycle repair places	21	35	29
Agricultural machinery, tools and equipment repair places	3	4	3
Electronic tool repair places	10	4	11
Battery-charging services	35	41	47
Handicraft places, wooden furniture and forest by-products	9	15	13
Other handicraft places (excluding furniture)	14	7	20
Small-scale services (hairstylist, phone service, massage,	29	57	38

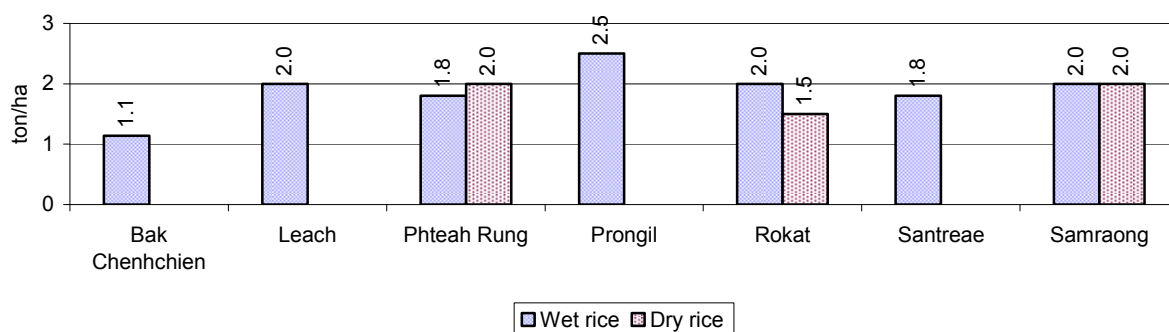
Descriptions	Number of places by year		
	2006	2007	2008
Karaoke, etc)			
Small-scale food shop businesses (Food, groceries, drink shop, etc)	10	9	55
Small-scale rice mills	331	769	759
Medium or large-scale rice mills	1	2	2
Small-scale markets	3	5	5
Large-scale market	0	3	1
Alcohol refinery places	15	22	17
Pharmacies and small drug stores	4	3	4
Hotels	0	0	0
Guest houses	0	0	0
Restaurants	0	0	0
Gasoline stations	4	4	4

2.5 Agriculture

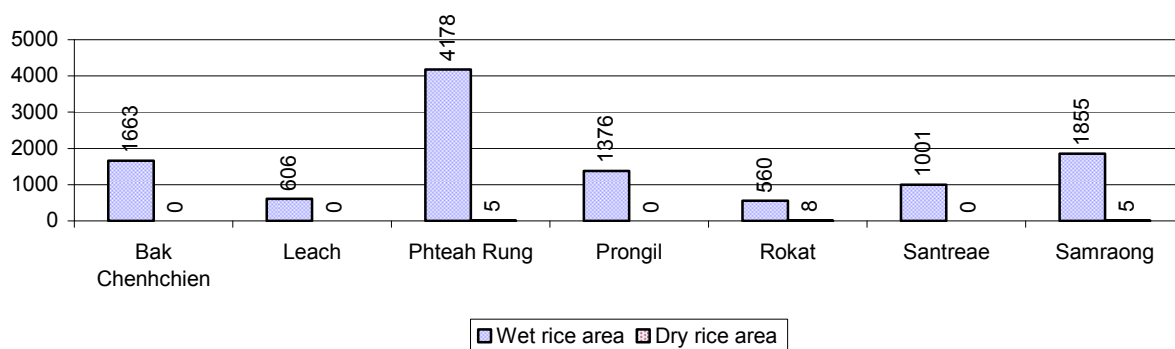
2.5.1 Rice cultivation in the District over 3 years

Description	2006	2007	2008
Total dry rice land area	282 ha	414 ha	264 ha
Actual dry rice cultivation area	71 ha	20 ha	18 ha
% actual cultivation to total land	25%	5%	7%
Total dry rice production	107 tonne(s)	37 tonne(s)	33 tonne(s)
Average dry rice yield	1.5 tonne(s)/ha	1.8 tonne(s)/ha	1.8 tonne(s)/ha
Total wet rice land area	6,575 ha	11,568 ha	11,787 ha
Actual wet rice cultivation area	10,020 ha	8,368 ha	11,239 ha
% actual cultivation to total land	152 %	72%	95%
Total wet rice production	13,226.40 tonne(s)	14,273.42 tonne(s)	21,257.77 tonne(s)
Average wet rice yield	1.3 tonne(s)/ha	1.7 tonne(s)/ha	1.9 tonne(s)/ha
Total intensive rice land area	0 ha	1,710 ha	1,710 ha
Actual intensive rice cultivation area	- ha	3,420 ha	3,420 ha
Average intensive rice yield	- tonne(s)/ha	2.0 tonne(s)/ha	2.0 tonne(s)/ha
Actual upland rice cultivation area	96 ha	667 ha	685 ha
Total upland rice production	118 tonne(s)	709 tonne(s)	1,055 tonne(s)
Average upland rice yield	1.2 tonne(s)/ha	1.1 tonne(s)/ha	1.5 tonne(s)/ha

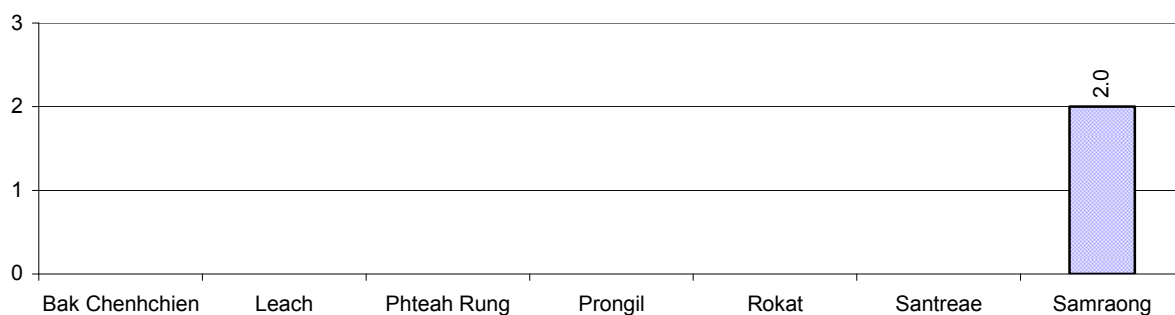
2.5.2 Estimated wet and dry Season Rice Yield in tonne(s)/Ha, by Commune, in 2008



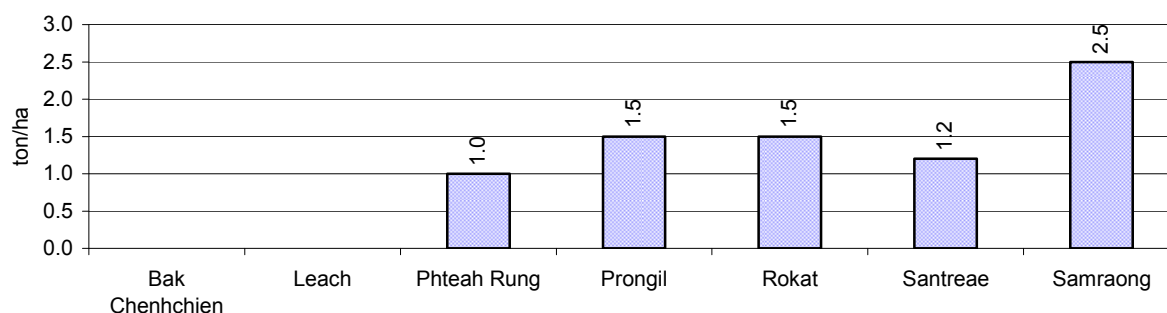
2.5.3 Cultivated wet and dry Season Rice areas in Ha, by Commune, in 2008



2.5.4 Estimated intensive Rice Yields in tonnes/Ha, by Commune, for 2008



2.5.5 Estimated upland Rice Yield in tonnes/Ha, by Commune, for 2008

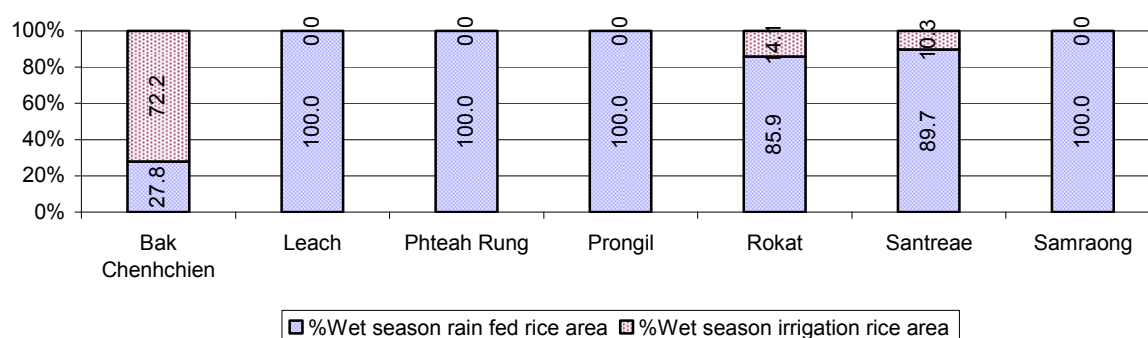


2.5.6 Wet season Rice irrigation across 3 years

Description		2006	2007	2008	
		%	%	%	Number
Total area of wet season rain fed rice land		77%	80%	88 %	9,857 ha
Percentage of wet season rice land that is irrigated; and for 2008 area in Ha		23 %	20 %	12 %	1,382 ha
Where	Area irrigated from canal/dam	44 %	15 %	100 %	1,382 ha
	Area irrigated from river, stream, lake, natural pond	5 %	14 %	0 %	0 ha
	Area irrigated from drilled well	0 %	0 %	0 %	0 ha
	Area irrigated from dug pond	52 %	72 %	0 %	0 ha

2.5.7 Water sources for wet Season Rice Cultivation, by Commune, in 2008

This chart shows the percentage of wet season rice cultivation receiving water from rain (natural) and from irrigation.



2.5.8 Access to Irrigation

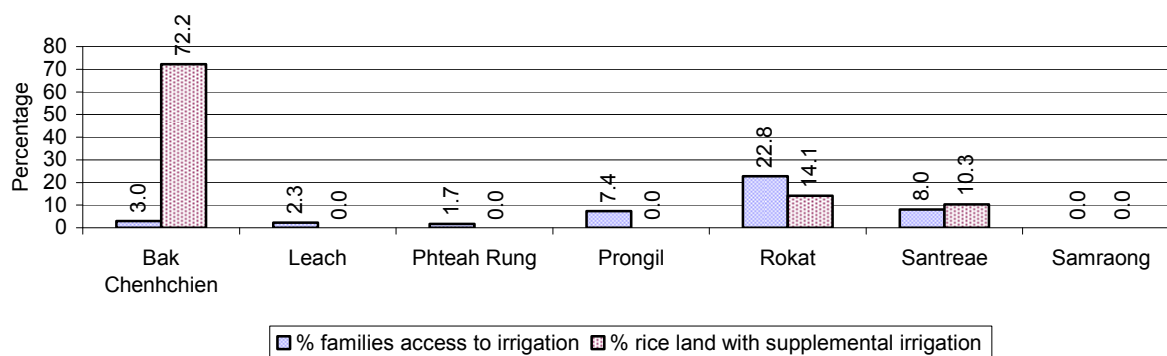
Description	2006	2007	2008	
			%	Number
Families who have access to irrigation water	3%	6%	4%	497 families
Families who have irrigation wells	0%	0%	0%	0 families

Note: Calculated against the total number of families are rice farmers

2.5.9 Number of Irrigation Wells over 3 years

Description	2006	2007	2008
Number of irrigation wells	0 wells	4 wells	0 wells

2.5.10 Percentage of Families with access to (supplemental) Irrigation for wet Season Rice cultivation, by Commune, in 2008



Note: % of families, with access to irrigation is calculated against the total number of families, whose main occupation is rice farming. Irrigated wet rice land area is calculated against the total actual wet rice land cultivated areas

2.5.11 Irrigation Wells, by Commune, in 2008

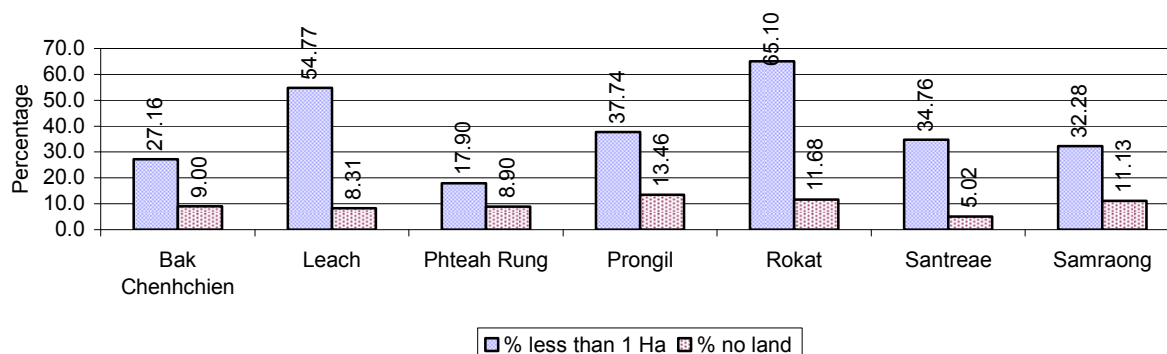
There are no irrigations wells in this District in 2008

2.5.12 Farmers owning less than one hectare of Rice Land

Description	2006	2007	2008	
	%	%	%	Number
Families who have less than one hectare of rice land	36%	36%	34%	3,804 families
Families who do not own any rice land	9%	11%	10%	1,102 families

Note: Calculated on basis of total number of families who are rice farming

2.5.13 Percentage of Farmers with less than one Hectare or no Rice Land, by Commune, in 2008

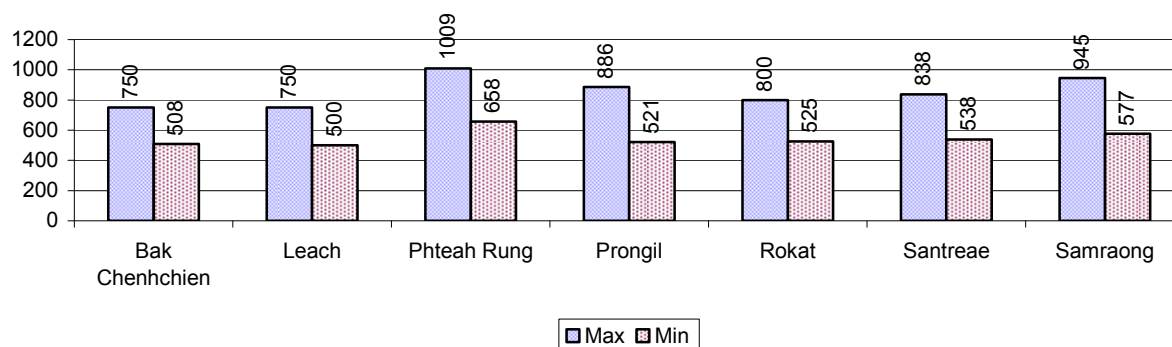


Note: Calculated on basis of total number of families who are rice farming

2.5.14 Average farm-gate Prices of Rice, over 3 years

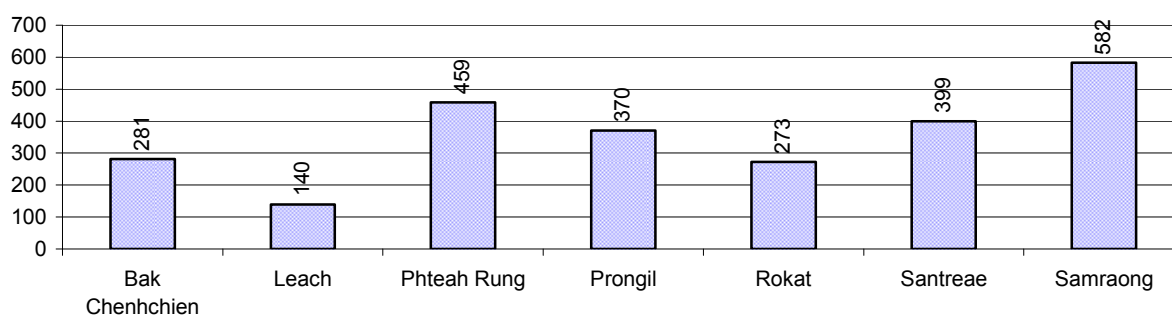
Description	2006	2007	2008
Maximum average farm gate price	544 Riels/Kg	731 Riels/Kg	854 Riels/Kg
Minimum average farm gate price	379 Riels/Kg	579 Riels/Kg	547 Riels/Kg
Average farm gate price	462 Riels/Kg	655 Riels/Kg	700 Riels/Kg
Average rice production per person	217 Kg/person	295 Kg/person	397 Kg/person

2.5.15 Minimum and maximum farm-gate Prices of Rice in Riel/kg, by Commune, in 2008



2.5.16 Production of Paddy in Kgs/Person, by Commune, in 2008

This table shows how much paddy (harvested rice) is produced in a year in a commune, in kgs per person.

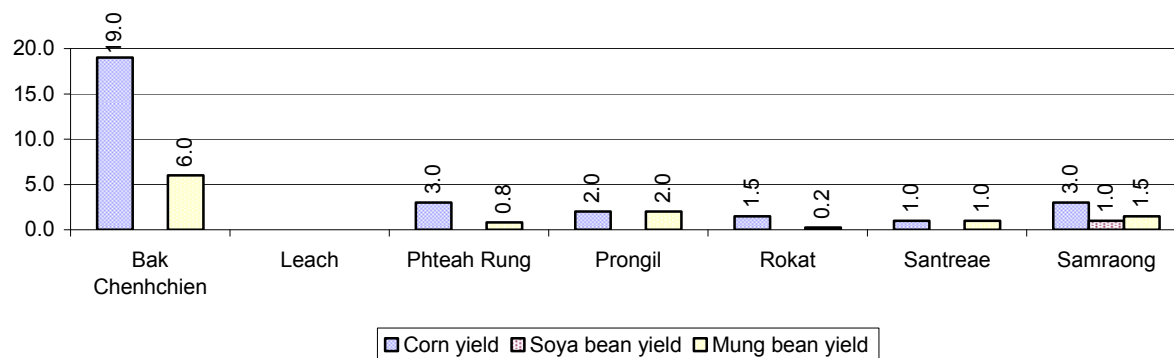


2.5.17 Production of other Crops, over 3 years

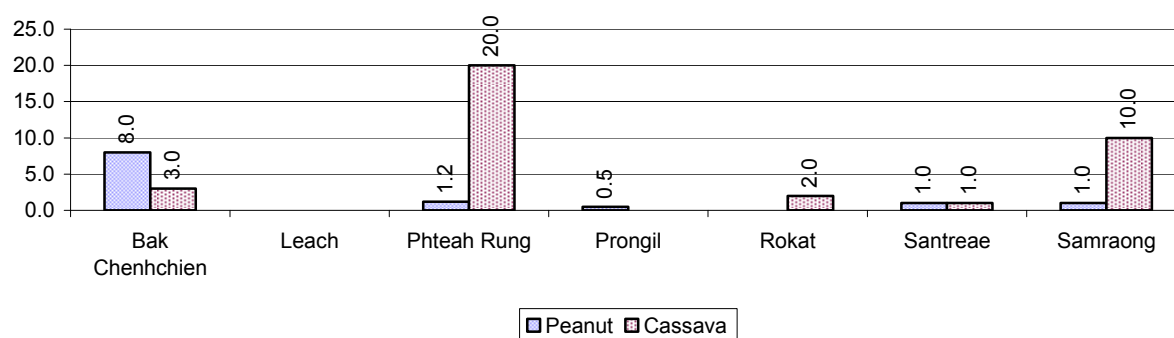
Crops	2006	2007	2008
Corn cultivation area	71 ha	82 ha	81 ha
Estimated corn yield	2.6 tonne(s)/ha	5.3 tonne(s)/ha	4.9 tonne(s)/ha
Estimated corn production	185 tonne(s)	428 tonne(s)	398 tonne(s)
Soya bean cultivation area	6 ha	17 ha	15 ha
Estimated Soya bean yield	3.0 tonne(s)/ha	1.3 tonne(s)/ha	1.0 tonne(s)/ha
Estimated Soya bean production	18 tonne(s)	21 tonne(s)	15 tonne(s)
Mungbean cultivation area	72 ha	110 ha	114 ha
Estimated Mungbean yield	2.3 tonne(s)/ha	2.5 tonne(s)/ha	1.9 tonne(s)/ha
Estimated Mungbean production	168 tonne(s)	271 tonne(s)	219 tonne(s)

Crops	2006	2007	2008
Peanut cultivation area	49 ha	51 ha	70 ha
Estimated Peanut yield	3.7 tonne(s)/ha	2.8 tonne(s)/ha	2.3 tonne(s)/ha
Estimated Peanut production	183 tonne(s)	141 tonne(s)	164 tonne(s)
Cassava cultivation area	18 ha	23 ha	211 ha
Estimated Cassava yield	3.7 tonne(s)/ha	5.0 tonne(s)/ha	7.2 tonne(s)/ha
Estimated Cassava production	66 tonne(s)	115 tonne(s)	1,519 tonne(s)
Sweet potatoes cultivation area	16 ha	14 ha	16 ha
Estimated Sweet potatoes yield	2.9 tonne(s)/ha	4.3 tonne(s)/ha	4.4 tonne(s)/ha
Estimated Sweet potatoes production	45 tonne(s)	58 tonne(s)	68 tonne(s)
Sesame cultivation area	9 ha	92 ha	110 ha
Estimated Sesame yield	2.3 tonne(s)/ha	1.6 tonne(s)/ha	1.9 tonne(s)/ha
Estimated Sesame production	20 tonne(s)	150 tonne(s)	209 tonne(s)

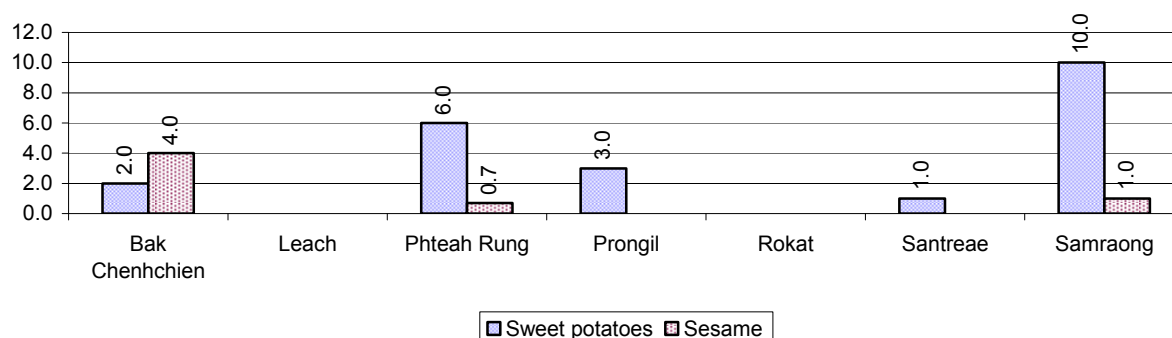
2.5.18 Yields of Corn, Soya beans and Mungbeans in tonne(s)/ha, by Commune, in 2008



2.5.19 Yields of Peanuts and Cassava in tonne(s)/ha by Commune, in 2008



2.5.20 Yields of Sweet Potatoes and Sesame in tonne(s)/ha, by Commune, in 2008



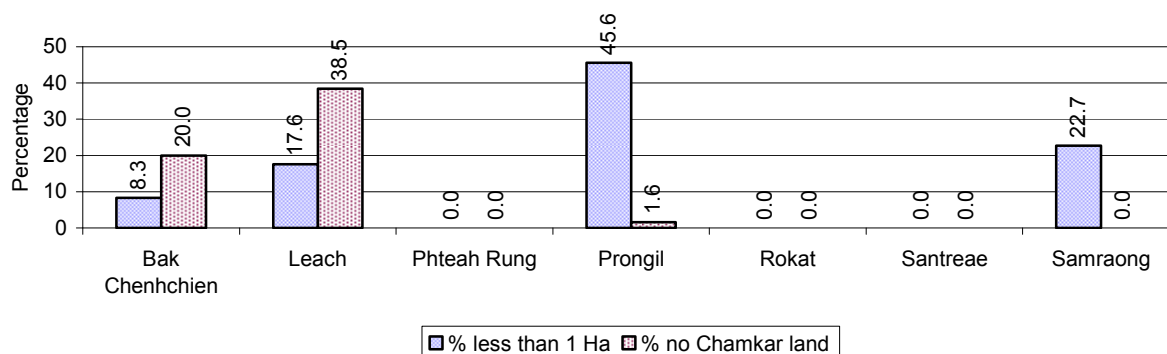
2.5.21 Percentage Farmers who own less than 1 Ha or no Chamkar land

Description	2006 %	2007 %	2008	
			%	Number
Families, who own less than 1ha of Chamkar land	28%	30%	28%	114 families
Families, with no Chamkar land	15%	14%	12%	50 families

Note 1: Calculated as a percentage of the total number of families whose main occupation is Chamkar (not rice) farming

Note 2: Chamkar land is no-rice land, i.e. other crops

2.5.22 Percentage Farmers owning less than 1 ha or no Chamkar land, by Commune, in 2008



Note: Percentage is calculated among families, who Chamkar farm as a main occupation, not the total population of the commune.

2.5.23 Percentage of Families raising Cattle/Buffalo, over 3 years

Description	2006 %	2007 %	2008	
			%	Number
Families raising cattle/buffalo	69%	74%	75%	9,220 families
Families raising cattle/buffalo as labor forces	61%	66%	66%	8,056 families

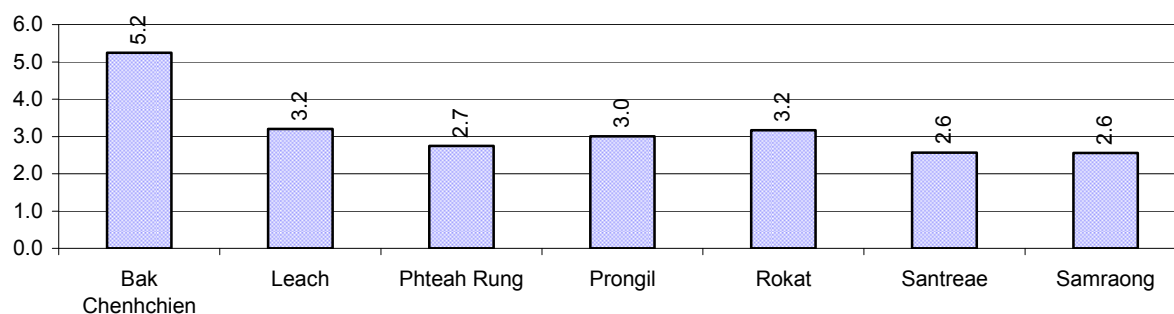
Note: Calculated against the total number of families.

2.5.24 Number of Cattle/buffalo being raised, over 3 years

Description	2006	2007	2008
Total number of cattle/buffalo	27,033 head(s)	30,625 head(s)	28,555 head(s)
Average cattle/buffalo per families	3.4 head(s)/families	3.5 head(s)/families	3 head(s)/families

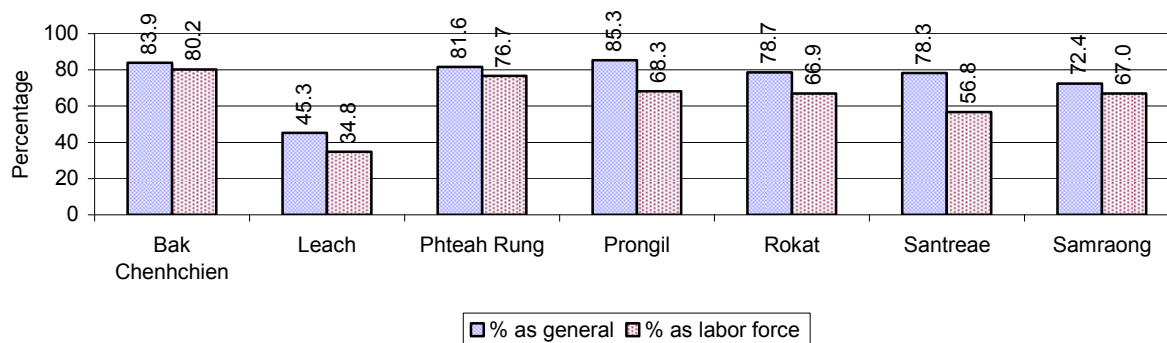
Note: Calculated by dividing total number of cattle/buffalo by total number of cattle/buffalo raising families

2.5.25 Average number of Cattle/Buffalo per Family, by Commune, in 2008



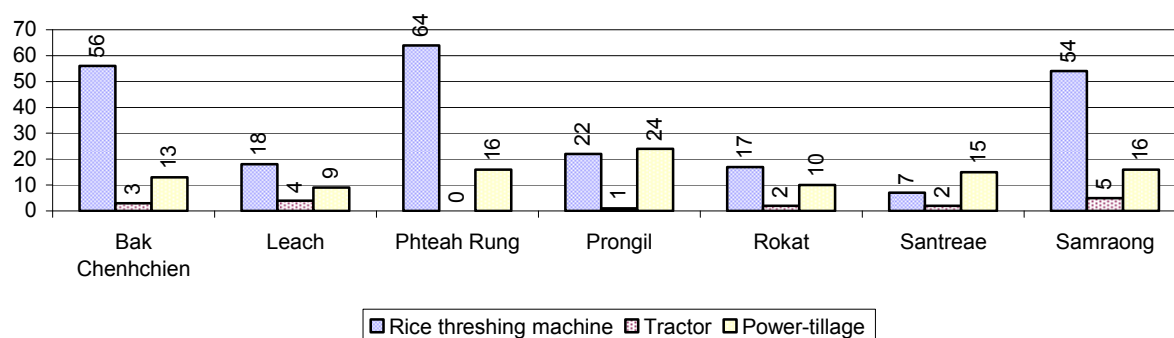
Note: Calculated by dividing total number of cattle/buffalo by total number of cattle/buffalo raising families

2.5.26 Percentage Families raising Cattle/Buffalo, for general and labor purposes in 2008, by Commune



Note: Calculated using the total number of families raising cattle/buffalo against the total number of families.

2.5.27 Type and number of agricultural Machines, by Commune, in 2008

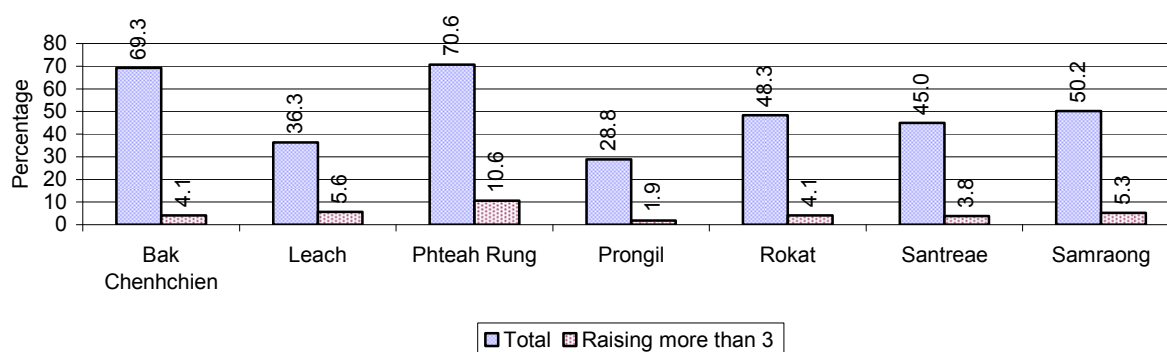


2.5.28 Livestock-producing Households over 3 years

Description	2006 %	2007 %	2008	
			%	Number
Total number of families raising pigs	51%	52%	51%	6,307 families
number of families raising more than 3 pigs	8%	6%	6%	708 families
Total number of families raising chickens	77%	77%	81%	9,974 families
number of families raising more than 3 chickens	61%	56%	61%	7,501 families
Total number of families raising ducks	8%	6%	8%	972 families
number of families raising more than 5 ducks	6%	4%	6%	697 families
Total number of families raising goats or sheep	0%	0%	0%	6 families
Total number of families raising horses	0%	0%	0%	16 families

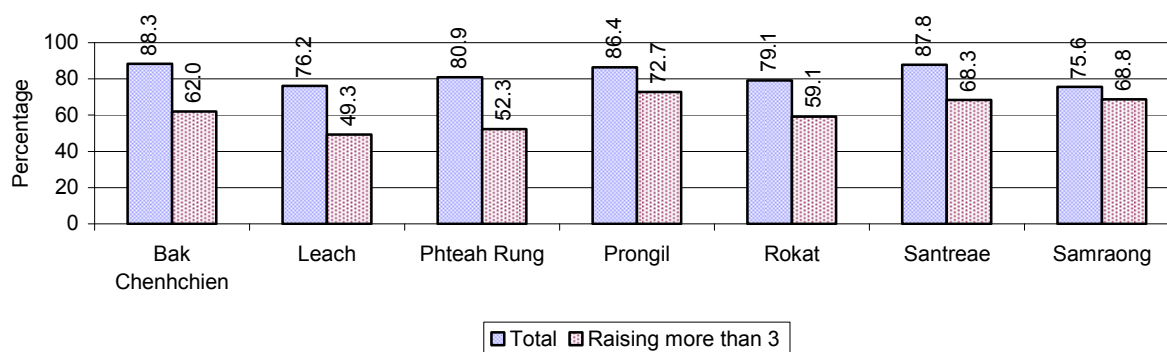
Note: Calculated against the total number of families

2.5.29 Percentage Families raising Pigs, by Commune, in 2008



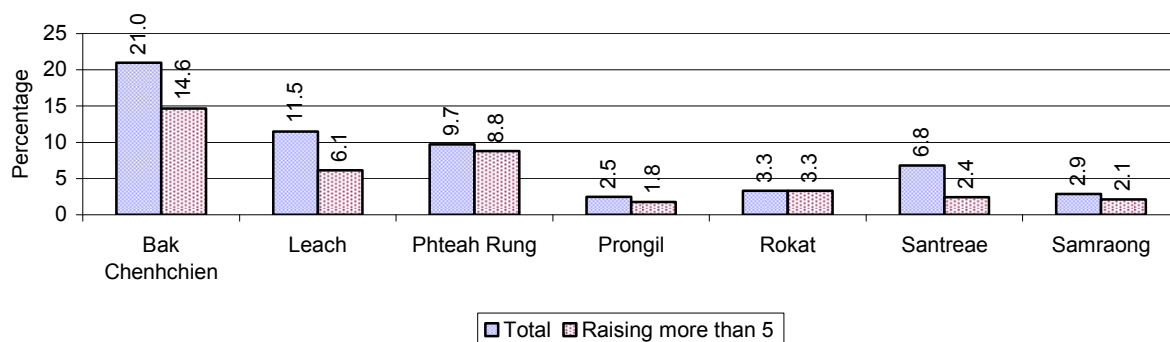
Note: Calculated against the total number of families in the commune

2.5.30 Percentage Families raising Chickens, by Commune, in 2008



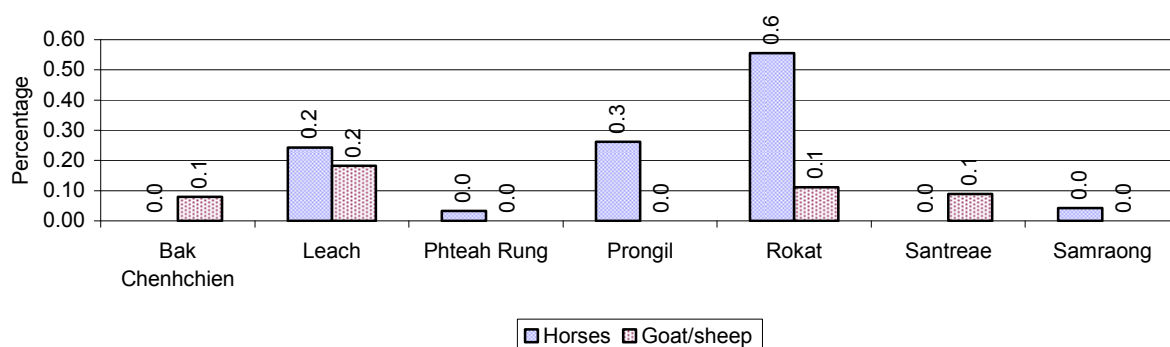
Note: Calculated against the total number of families in the commune

2.5.31 Percentage Families raising Ducks, by Commune, in 2008



Note: Calculated against the total number of families in the commune

2.5.32 Percentage Families raising Horses, Goats or Sheep, by Commune, in 2008

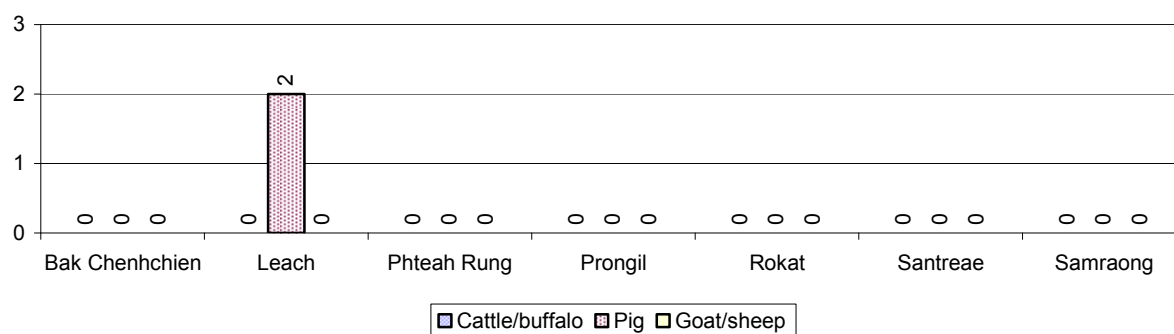


Note: Calculated against the total number of families in the commune

2.5.33 Livestock Farms over 3 years

Description	2006	2007	2008
Number of cattle/buffalo farms	7 farm(s)	0 farm(s)	0 farm(s)
Number of pig farms	5 farm(s)	2 farm(s)	2 farm(s)
Number of goat/sheep farms	0 farm(s)	0 farm(s)	0 farm(s)
Number of chicken farms	0 farm(s)	0 farm(s)	0 farm(s)
Number of duck farms	3 farm(s)	2 farm(s)	0 farm(s)

2.5.34 Number Livestock Farms, by Commune in 2008



Note: Number of farms are recorded by the village chief, not by counting number of livestock in each farm

2.5.35 Number Chicken and Duck Farms, by Commune, for 2008

There were no farms of this type in this District in 2008

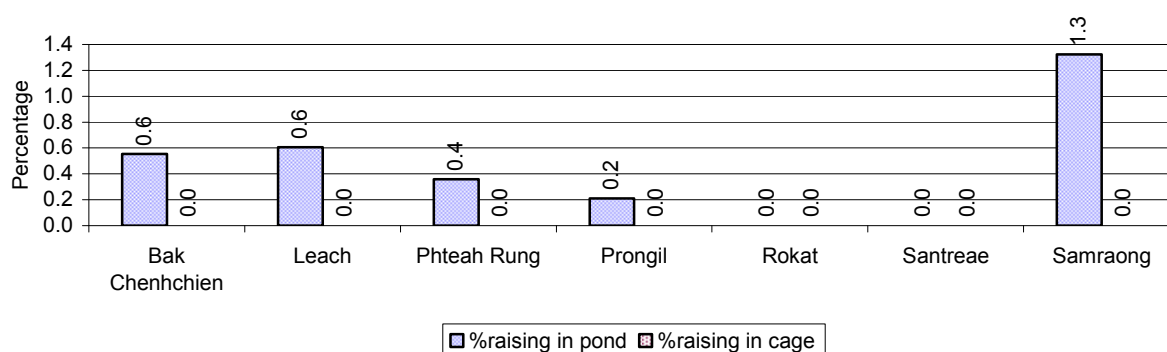
Note: Number of farm places recorded by village chief, not by counting number of livestock in each farm

2.5.36 Families raising Fish over 3 years

Description	2006	2007	2008
Total number of families raising fish	116 families	86 families	63 families
% families raising fish	1%	1%	1%
Number families raising fish in pond	116 families	86 families	63 families
% families raising fish in pond	1%	1 %	1%
Number fish pond	107 pond(s)	98 pond(s)	71 pond(s)
No. of ponds per family	0.9 pond/families	1.1 pond/families	1.1 pond/families
Number of families raising fish in cage	0 families	0 families	0 families
%families raising fish in cage	0 %	0 %	0%
Number of fish cage	0 cage(s)	0 cage(s)	0 cage(s)
No. of fish cage per family	- cage /families	- cage /families	- cage /families

Note: % of families raising fish or fish in ponds or cages is calculated a percentage of the total number of families.

2.5.37 Percentage of Families raising Fish, by Commune, in 2008



Note: Calculated as a percentage of the total number of families in the commune.

2.5.38 Shrimp and Prawn Farming over 3 years

Description	2006	2007	2008
Number of families raising shrimps	0 families	0 families	0 families
% Families raising shrimps	0%	0%	0%
Number of shrimp ponds	0 pond	0 pond	0 pond
Total area raising shrimps	0 ha	0 ha	0 ha
Area per family	-ha/families	-ha/families	-ha/families
Number of families raising prawns	0 families	0 families	0 families
% families raising prawns	0%	0%	0%
Number prawn ponds	0 pond	0 pond	0 pond
Ponds per families	- pond/families	-pond/families	-pond/families
Number of prawn cages	0 cage	0 cage	0 cage
Cages per families	0 cage /families	0 cage /families	0 cage /families

Note: Percentage of families raising either prawns or shrimp is calculated against the number of families, who do aquaculture farming, NOT the total population.

2.5.39 Numbers of Families raising Shrimps and number of Shrimp Ponds, by Commune, in 2008

There were none of these in this District in 2008

2.5.40 Number of Families raising Prawn and Number of Prawn Ponds/Cages, by Commune, in 2008

There were none of these in this District in 2008

3 Social Aspects

3.1 Education

3.1.1 Kindergarten in the District over 3 years

Description	2006	2007	2008
Number of community kindergarten schools	7 school(s)	7 school(s)	7 school(s)
Number of community kindergarten class rooms	7 room(s)	6 room(s)	8 room(s)
Number of community kindergarten classes	7 class(es)	6 class(es)	8 class(es)
Number of community kindergarten teachers	7 person(s)	7 person(s)	8 person(s)
Number of women community kindergarten teachers	7 women	7 women	8 women
Number of state and private kindergarten schools	6 school(s)	5 school(s)	6 school(s)
Number of state and private kindergarten class rooms	9 room(s)	6 room(s)	8 room(s)
Number of state and private kindergarten classes	9 class(e)s	6 class(es)	8 class(es)
Number of state and private kindergarten teachers	9 person(s)	8 person(s)	9 person(s)
Number of women state and private kindergarten teachers	9 women	8 women	9 women

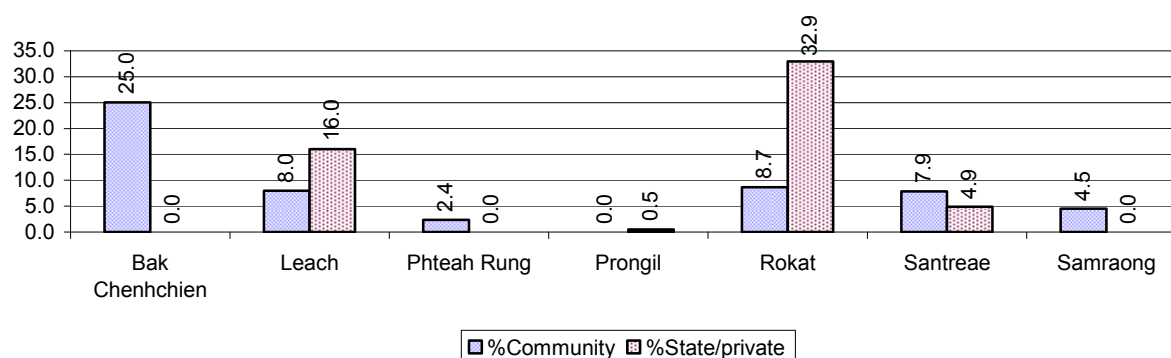
3.1.2 Percentage enrolment at Kindergarten level over 3 years

This table shows the percentage of the total 3-5 year old population attending kindergarten.

Description	2006 %	2007 %	2008	
			%	Number
Total percentage of children, 3-5 yrs, go to kindergarten	11%	12%	12%	754 person(s)
Percentage of children, 3-5 yrs, go community kindergarten	5%	4%	7%	431 person(s)
Percentage children, 3-5 yrs, go state/private kindergarten	6%	8%	5%	323 person(s)

Note: Calculated against the total for that age group

3.1.3 Percentage of Children 3-5 yrs attending Kindergarten, by Commune, in 2008



3.1.4 Basic Education over 3 years

Primary School

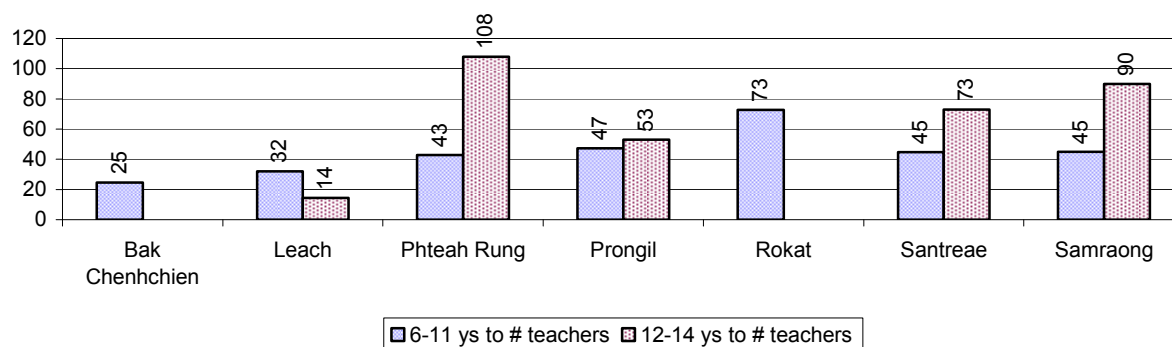
Description	2006	2007	2008
Number of primary schools	39 school(s)	47 school(s)	41 school(s)
Number of primary school rooms	259 room(s)	288 room(s)	295 room(s)
Number of primary classes	312 class(es)	273 class(es)	326 class(es)
Number of primary teachers	252 person(s)	267 person(s)	236 person(s)
Ratio of children 6-11 yrs to school	246	198	233
Ratio of children 6-11 yrs to school room	37	32	32
Ratio of children 6-11 yrs to class	31	34	29
Ratio of children 6-11 yrs to teacher	38	35	40

Note: According to education norm, children 6-11 yrs should attend primary school, while 12-14 yrs should be in lower secondary school, but in reality this varies.

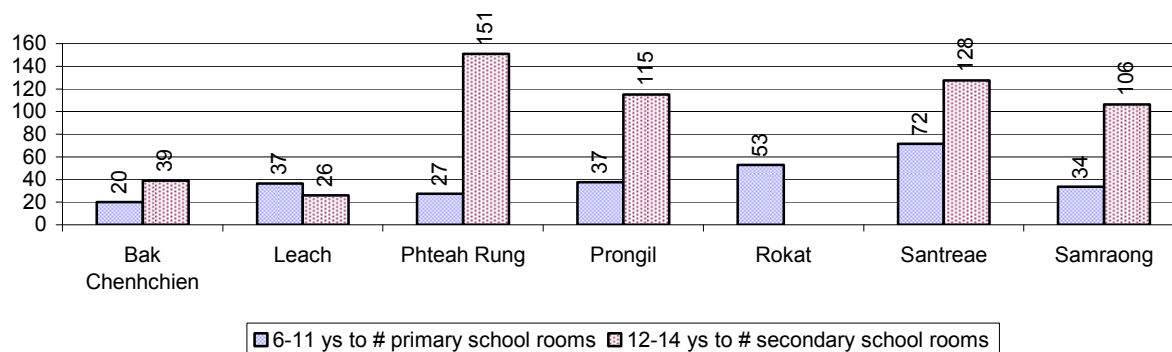
Lower Secondary School

Description	2006	2007	2008
Number of lower secondary schools	6 school(s)	8 school(s)	6 school(s)
Number of lower secondary school rooms	49 room(s)	60 room(s)	67 room(s)
Number of lower secondary classes	52 class(es)	59 class(es)	64 class(es)
Number of lower secondary teachers	89 person(s)	92 person(s)	90 person(s)
Ratio children 12-14 yrs to school	849	638	892
Ratio of children 12-14 yrs to school room	104	85	80
Ratio of children 12-14 yrs to class	98	87	84
Ratio of children 12-14 yrs to teacher	57	56	59

3.1.5 Ratio of 6-11 year old and 12-14 year old Children to number of Teachers, by Commune, in 2008



3.1.6 Ratio of 6-11 year old and 12-14 year old Children to number of School Rooms, by Commune, in 2008



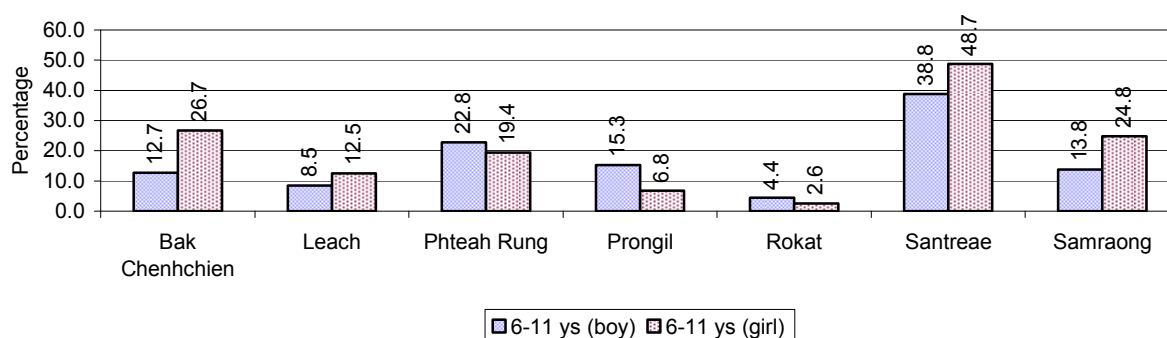
3.1.7 Enrolment status at Primary Level over 3 years

Description	2006 %	2007 %	2008	
			%	Number
Total children aged 6-11 years old	15%	15%	15%	9,544 person(s)
Total children aged 6-11 who are in school	79%	81%	81%	7,768 person(s)
Total children aged 6-11 who are not in school	21%	19%	19%	1,776 person(s)
Total girls aged 6-11 years old	15%	15%	15%	4,932 person(s)
Total girls aged 6-11 who are in school	79%	79%	80%	3,950 person(s)
Total girls aged 6-11 who are not in school	21%	21%	20%	982 person(s)
Total boys aged 6-11 years old	16%	15%	15%	4,612 person(s)
Total boys aged 6-11 who are in school	79%	84%	83%	3,818 person(s)
Total boys aged 6-11 who are not in school	21%	16%	17%	794 person(s)

Note 1: Percentage is calculated on the basis of the total number of children within 6-11 year age group for the first 3 rows and for the total girls and the total boys aged 6-11 yrs.

Note 2: Number of girls aged 6-11 who are in & not in school is calculated against the total number of girls aged 6-11 yrs. Number boys, 6-11 yrs who are in & not in school are calculated against the total number of boys aged 6-11 yrs.

3.1.8 Percentage of 6-11 year old Children not in School, by Commune, in 2008



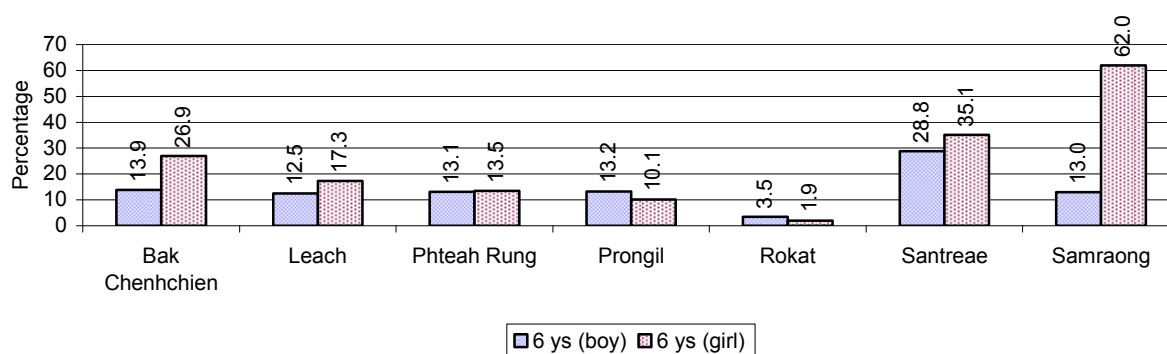
Note: calculated on the basis of the total number of children within 6-11 year age group in the commune.

3.1.9 Enrolment of 6 year old Children over 3 years

Description	2006 %	2007 %	2008	
			%	Number
Total % and number of children aged 6 years old	6%	5%	5%	3,123 person(s)
Total % of children aged 6 years old in school	72%	81%	82%	2,559 person(s)
Total % of children aged 6 years old not in school	28%	19%	18%	564 person(s)

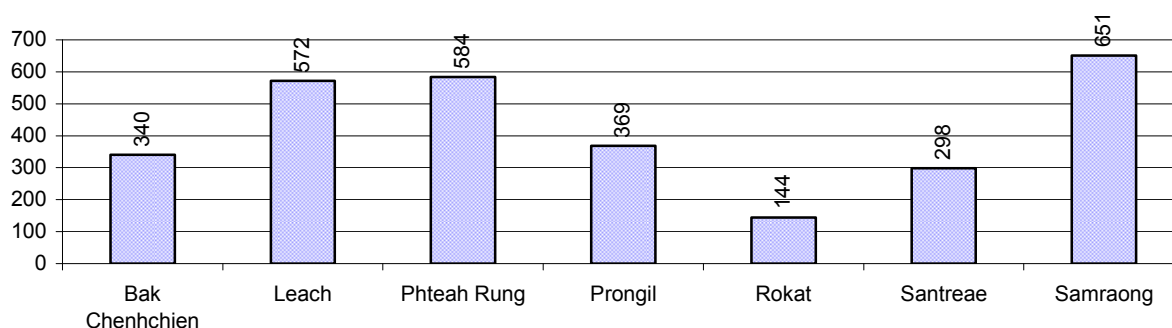
Note: First row calculated as a percentage of total population. Second and third row calculated as a percentage of the total number of 6 year olds.

3.1.10 Percentage of 6 year old Children not in School, by Commune, in 2008



Note: Calculated as a percentage of total 6 year old population

3.1.11 Number of 5 year old Children in each Commune in 2008

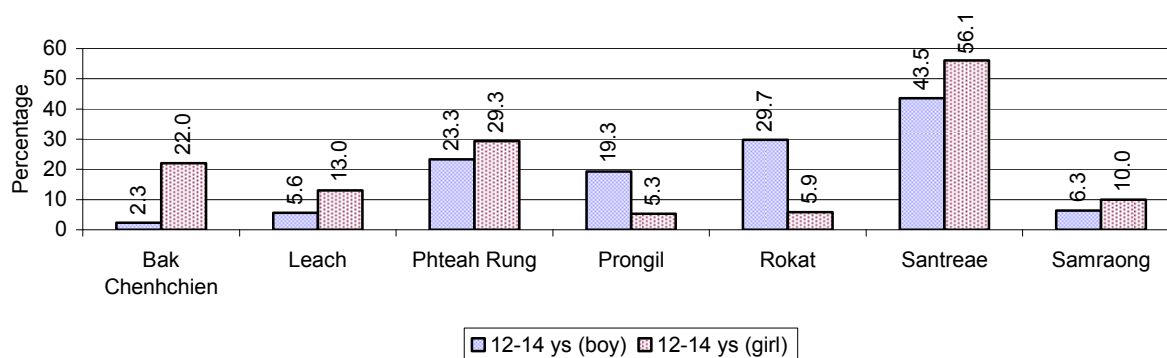


3.1.12 Enrolment at Lower Secondary Level over 3 years

Description	2006 %	2007 %	2008	
			%	Number
Total children aged 12-14 years old	8%	8%	8%	5,352 person(s)
Children aged 12-14 years old in school	79%	85%	81%	4,324 person(s)
Children aged 12-14 years old not in school	21%	15%	19%	1,028 person(s)
Total girls aged 12-14 years old	8%	8%	9%	2,824 person(s)
Girls aged 12-14 years old in school	78%	84%	79%	2,239 person(s)
Girls aged 12-14 years old not in school	22%	16%	21%	585 person(s)
Total boys aged 12-14 years old	9%	8%	8%	2,528 person(s)
Boys aged 12-14 years old in school	80%	86%	82%	2,085 person(s)
Boys aged 12-14 years old not in school	20%	14%	18%	443 person(s)

Note: Percentage is calculated on the basis of number of the total number of children within 12-14 yrs group, except for the first row of each section which is calculated on the basis of the total population.

3.1.13 Percentage of 12-14 year olds not in School, by Commune, in 2008



Note: Calculated as a percentage of the total 12-14 year old population in each commune

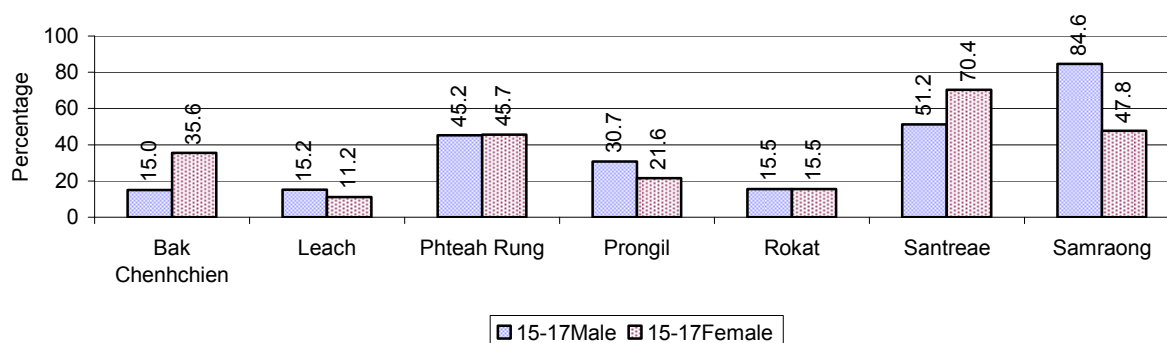
3.1.14 Upper Secondary Schools over 3 years

Description	2006	2007	2008
Number of upper secondary schools	1 school(s)	1 school(s)	1 school(s)
Number of upper secondary school rooms	12 room(s)	12 room(s)	12 room(s)
Number of upper secondary classes	12 class(es)	12 class(es)	12 class(es)
Number of upper secondary teachers	12 person(s)	15 person(s)	37 person(s)
Ratio of 15-17 yr olds to number of school	4,724	5,041	6,693
Ratio of 15-17 yr olds to number of school room	394	420	558
Ratio of 15-17 yr olds to number of classes	394	420	558
Ratio of 15-17 yr olds to number of teacher	394	336	181

3.1.15 Enrolment of 15-17 year old teenagers over 3 years

Description	2006	2007	2008
Number of teenage, 15-17 years old	4,724 person(s)	5,041 person(s)	6,693 person(s)
Number of teenage, 15-17 years old, who are not studying	1,494 person(s)	1,690 person(s)	3,341 person(s)
Percentage of teenage, 15-17 years old not studying	32%	34%	50%

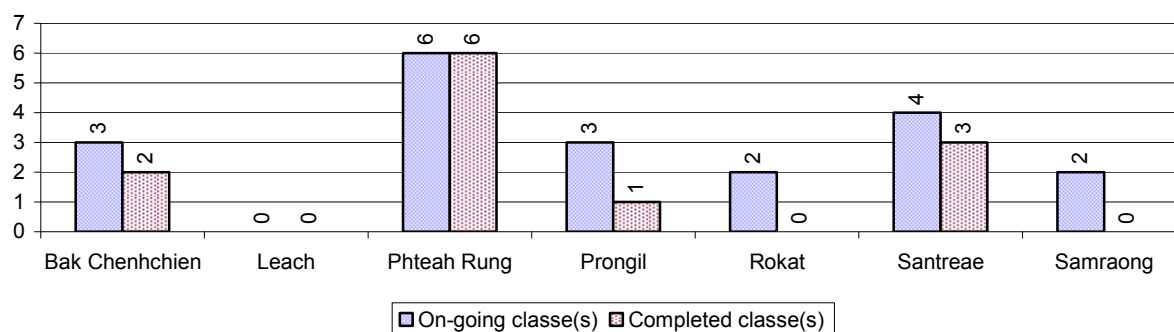
3.1.16 Percentage of 15-17 year old Teenagers not at School, by Commune, in 2008



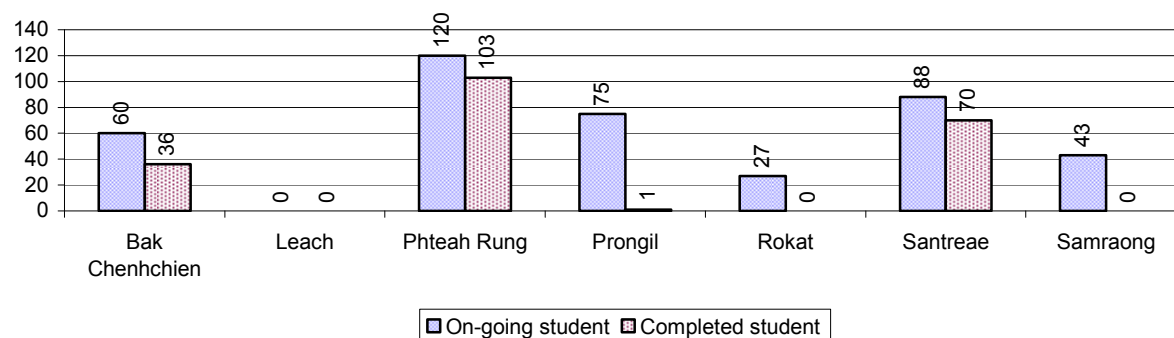
3.1.17 Literacy Classes as of 2008

Literacy classes	Organized by:		Other Program(s)	Total
	PDoEYS	NGOs		
Number of On-going literacy classes	11 class(es)	5 class(es)	4 class(es)	20 class(e(s)
Number of literacy students in on-going classes	222 person(s)	111 person(s)	80 person(s)	413 person(s)
Completed literacy class(es)	6 classes	2 classes	4 classes	12 classes
Number of literacy students that have completed literacy classes	107 person(s)	40 person(s)	63 person(s)	210 person(s)
Number of students that passed	104 person(s)	40 person(s)	63 person(s)	207 person(s)

3.1.18 Number of on-going and completed Literacy Classes, by Commune, in 2008



3.1.19 Students of on-going & completed Literacy Classes, by Commune, in 2008

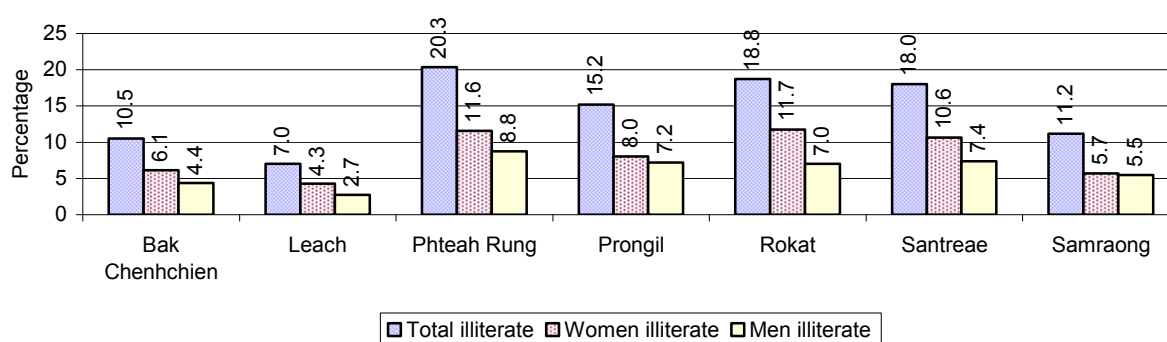


3.1.20 Percentage of illiterate People between 15-60, over 3 years

Illiteracy Status	2006 %	2007 %	2008	
			%	Number
Illiterate people, 15-60 years old	17%	15%	14%	5,190 person(s)
Illiterate females, 15-60 years old	10%	9%	8%	2,918 person(s)
Illiterate people, 15-17 years old	14%	9%	7%	438 person(s)
Illiterate females, 15-17 years old	7%	5%	4%	240 person(s)
Illiterate people, 18-24 years old	14%	11%	11%	875 person(s)
Illiterate females, 18-24 years old	8%	6%	6%	453 person(s)
Illiterate people, 25-60 years old	20%	18%	18%	3,877 person(s)
Illiterate females, 25-60 years old	11%	10%	10%	2,225 person(s)

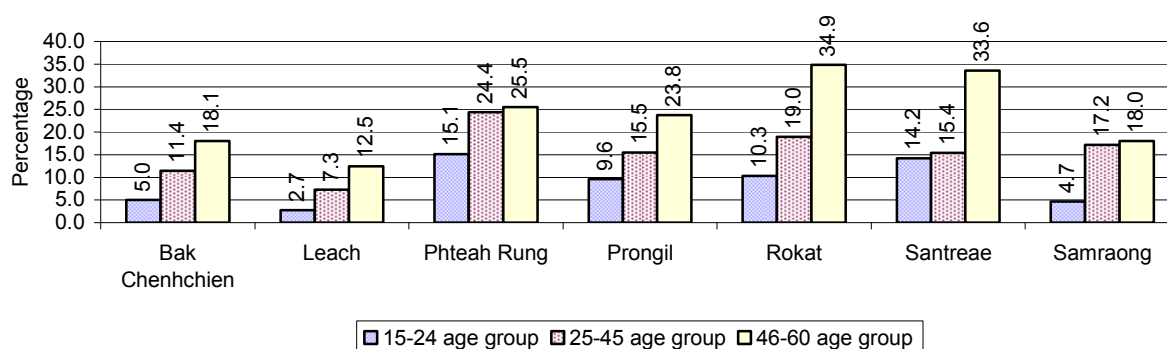
Note: Percentage is calculated on the basis of number of people in age each group.

3.1.21 Percentage illiterate People among 15-60 yrs old, by Commune, in 2008



Note: Percentages are calculated on the basis of number of people in that age group.

3.1.22 Percentage illiterate People for 15-24 yrs, 25-45 yrs and 46-60 yrs, by Commune, in 2008



Note: Percentage of illiterate people in each age group is calculated on the basis of number of people in that age group.

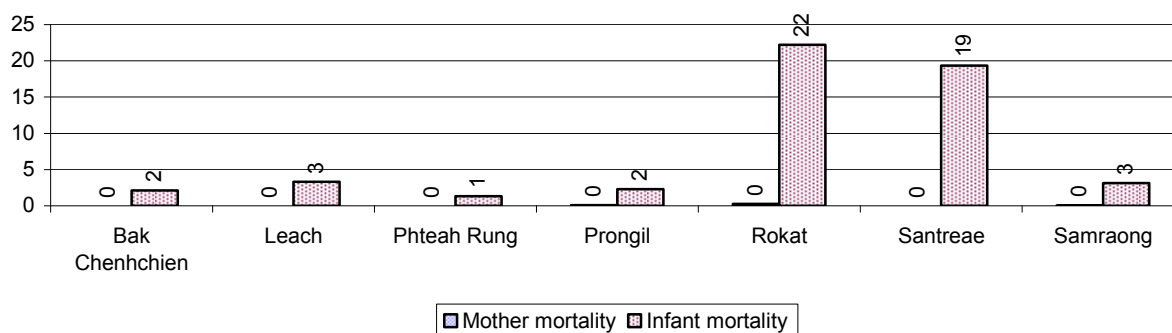
3.2 Health

3.2.1 Health Situation of Women and Children, over 3 years

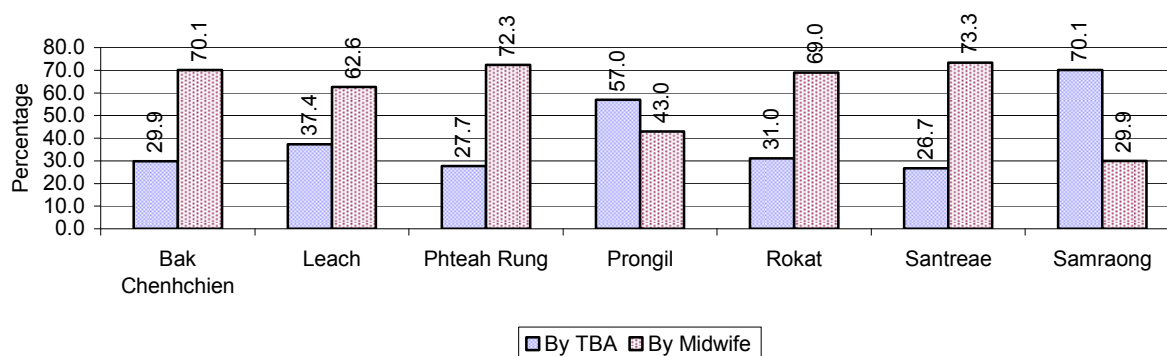
Description	2006	2007	2008
Number families with a birth during the year	854 families	879 families	817 families
Number of women who had their baby delivered by a TBA	446 person(s)	429 person(s)	359 person(s)
Percentage of women who had their baby delivered by a TBA	52 %	49 %	44 %
Number of women who had their baby delivered by a midwife	408 person(s)	450 person(s)	458 person(s)
Percentage of women had their baby delivered by a midwife	48 %	51 %	56 %
Number of mothers who died within 1 month of giving birth	2 person(s)	2 person(s)	3 person(s)
Mothers who died within 1 month of giving birth per 100,000 families having a delivery	234	228	367
Number of infants born during the year	855 person(s)	886 person(s)	818 person(s)
Number of Infants who died within 1 month	16 person(s)	23 person(s)	18 person(s)
Infants mortality within 1 month per 1,000 births	19	26	22
Number of children who died below the age of 5.	30 person(s)	20 person(s)	13 person(s)
Number of infants, aged 9-12 months, born during the year	526 person(s)	628 person(s)	384 person(s)
Nr. infants, aged 9-12 months, not receiving full immunization	25 person(s)	28 person(s)	18 person(s)
% of 9-12 months infants, not receiving full immunization	5 %	4 %	5 %

Note: TBA = Traditional Birth Attendant

3.2.2 Mothers dying within 0 days to 1 month of giving Birth and Infants dying within 1 month in 2008, by Commune

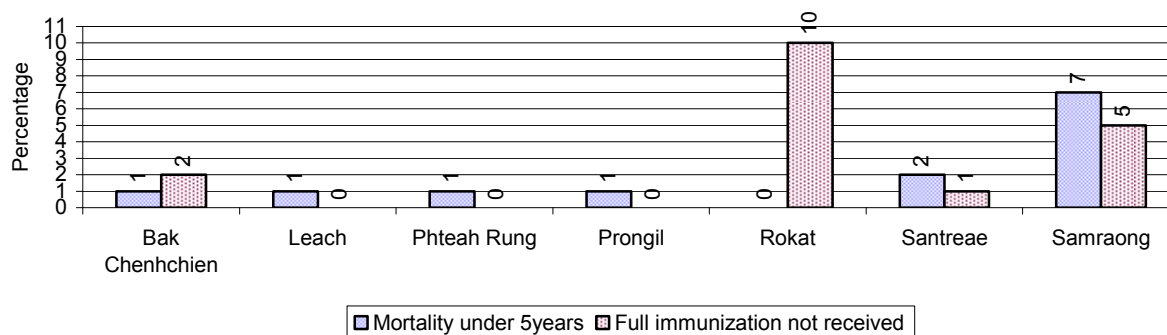


3.2.3 Percentage of Women delivering with a TBA or Midwife, by Commune



Note: Calculated as a percentage of total deliveries

3.2.4 Percentage of Children dying below 5 & of 9-12 months not receiving full Immunization, by Commune, in 2008



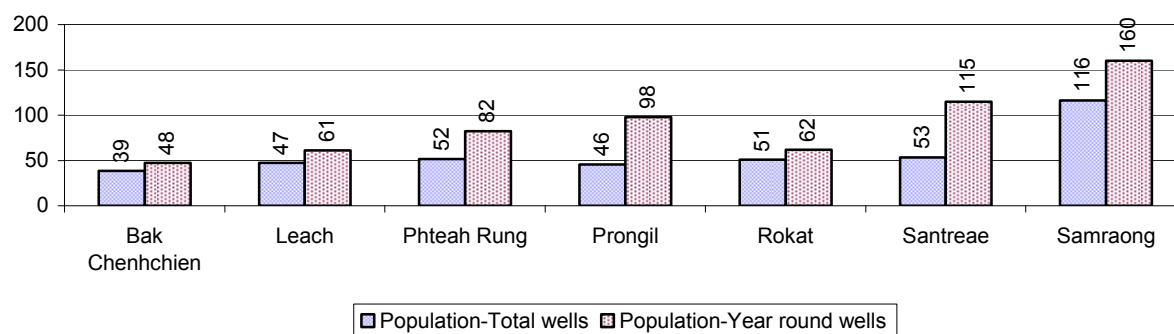
Note: Mortality rate calculated as a percentage of the total 5 year old population. Lack of immunization received calculated as a percentage of the total number 9-12 months olds there are

3.3 Water and Sanitation

3.3.1 Number of different types of Wells over 3 years

Type of wells	Number of wells by year		
	2006	2007	2008
Total number of pumped or mixed wells	515	598	629
Year-round usable pumped or mixed wells	355	415	426
Dry season unusable pump or mixed wells	160	183	203
Pump or mixed wells needing repair/rehabilitation	158	226	181
Total number of ring wells	521	533	551
Year-round usable ring wells	333	348	354
Dry season unusable ring wells	188	185	197
Ring wells needing repair/rehabilitation	166	252	210
Total number of unprotected dug wells	291	310	308
Year-round usable unprotected dug wells	223	232	236
Dry season unusable unprotected dug wells	68	78	72

3.3.2 Ratio of People to Wells, by Commune, in 2008

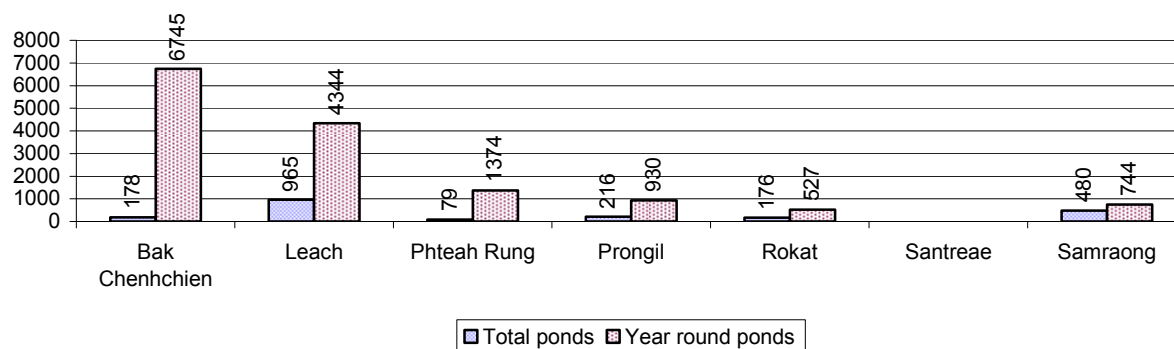


Note: Year-round wells excluding unprotected wells

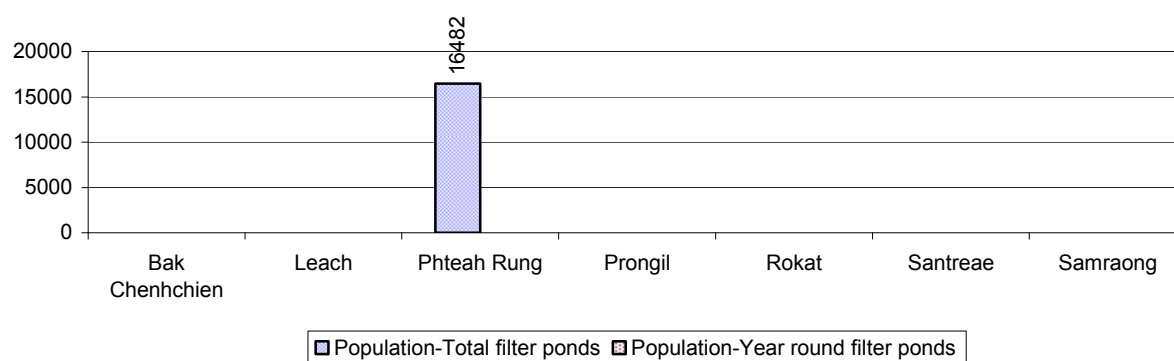
3.3.3 Potable Ponds over 3 years

Type of Pond	2006	2007	2008
<i>Total number of normal-type ponds</i>	451 pond	347 pond	353 pond
Year-round usable normal-type ponds	26 pond	40 pond	53 pond
Dry season unusable normal-type ponds	425 pond	307 pond	300 pond
Normal-type ponds needing repair/rehabilitation	213 pond	260 pond	246 pond
<i>Total number of filter ponds</i>	1 pond	2 pond	1 pond
Year-round usable filter ponds	1 pond	1 pond	0 pond
Filter ponds, dry season unusable	0 pond	1 pond	1 pond
Filter ponds needing repair/rehabilitate	1 pond	1 pond	1 pond

3.3.4 Ratio of People to normal Ponds, by Commune in 2008



3.3.5 Ratio of People to Filter Ponds, by Commune, in 2008

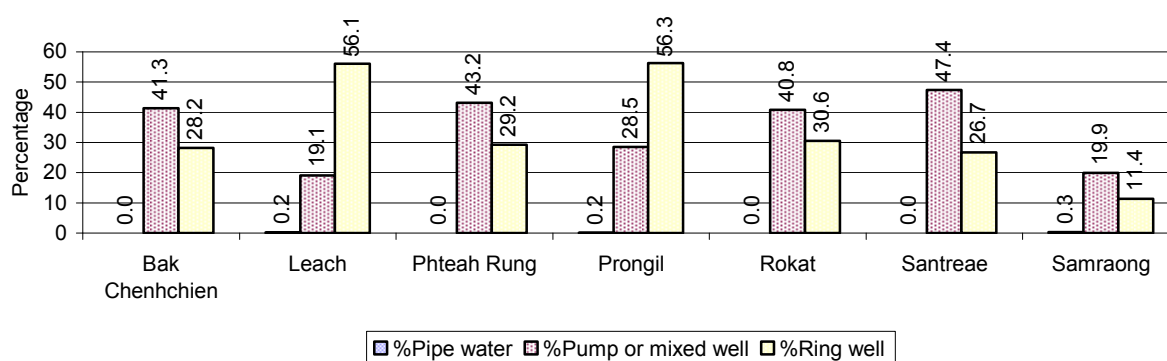


3.3.6 Source of potable Water for Households, over 3 years

Water sources	2006	2007	2008	
	%	%	%	Number
Families using water from purification system	1%	1 %	0 %	14 families
Families using water from pump, mixed wells	24%	26 %	33 %	4,071 families
Families using water from ring wells and open dug wells	44%	45 %	33 %	4,095 families
Families using water from pond	8%	5 %	10 %	1,263 families
Families using water from rain water storage	2%	2 %	2 %	293 families
Families using water from rivers, lakes, natural ponds and reservoirs	21%	21 %	21 %	2,519 families

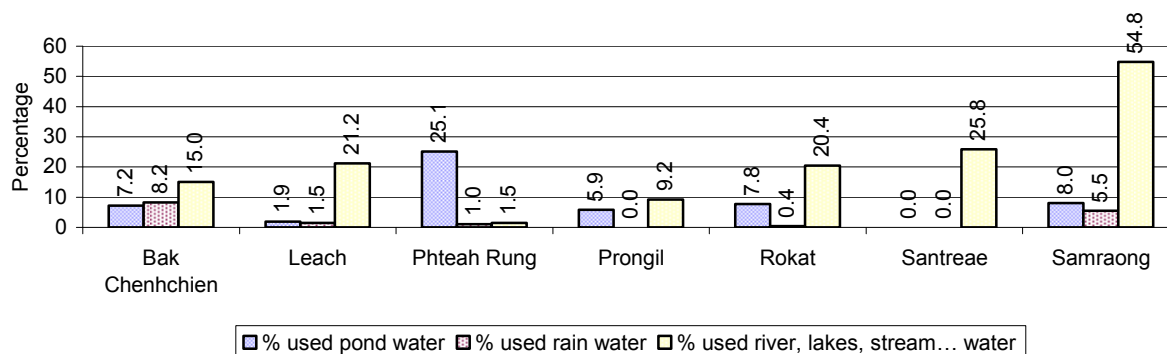
Note: Calculated as a percentage of the total number of families.

3.3.7 Percentage Families using different Water Sources, by Commune, in 2008



Note: Calculated as a percentage of the total number of families in each commune

3.3.8 Percentage Families using Water from Rain Water Storage, Ponds and natural Sources (rivers/lakes/natural ponds/reservoirs), by Commune, 2008



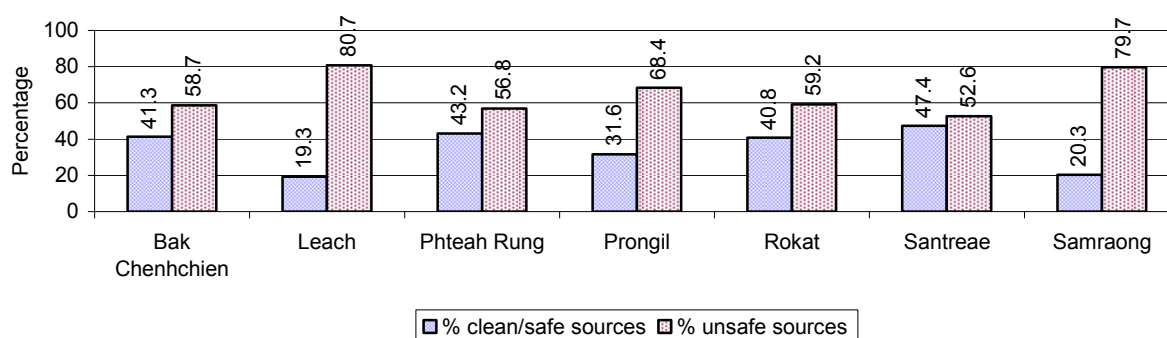
Note: Calculated as a percentage of the total number of families in each commune

3.3.9 Drinking Water Sources in the dry Season over 3 years

Percentage Families that get drinking water from:	2006	2007	2008	
	%	%	%	Number
from clean/safe sources	30 %	27 %	34 %	4,142 families
from unsafe sources	70 %	73 %	66 %	8,113 families

Note: Calculated as a percentage of the total number of families.

3.3.10 Percentage Families using safe and unsafe Water Sources in the dry Season, by Commune, in 2008



Note: Calculated as a percentage of the total number of families in each commune.

3.3.11 Drinking Water Purification by Households, over 3 years

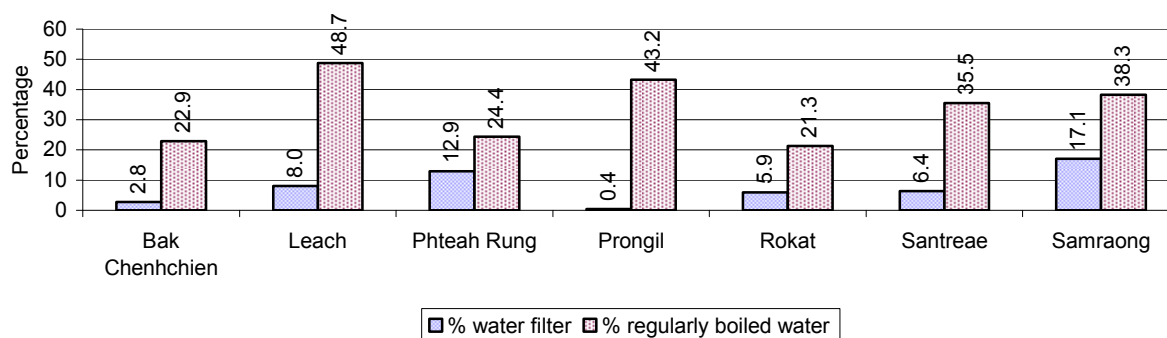
This table shows the different ways families make water safe for drinking.

Families, who:	2006	2007	2008	
	%	%	%	Number
Filter water for drinking	5%	7%	9 %	1,096 families
Boil water for drinking	34%	32%	34 %	4,155 families

Note: Calculated as a percentage of the total number of families

3.3.12 Percentage Families filtering Water or regularly boiling Water, by Commune, in 2008

This graph shows the different ways families make drinking water safe.



Note: Calculated on as a percentage of the total number of families in each commune.

3.3.13 Families' access to Water, over 3 years

Families access to water	2006 %	2007 %	2008	
			%	Number
Families with water at home or in less then 150m	37%	25%	26 %	3,212 families
Families with water 150m or more away from home	49%	32%	30 %	3,658 families

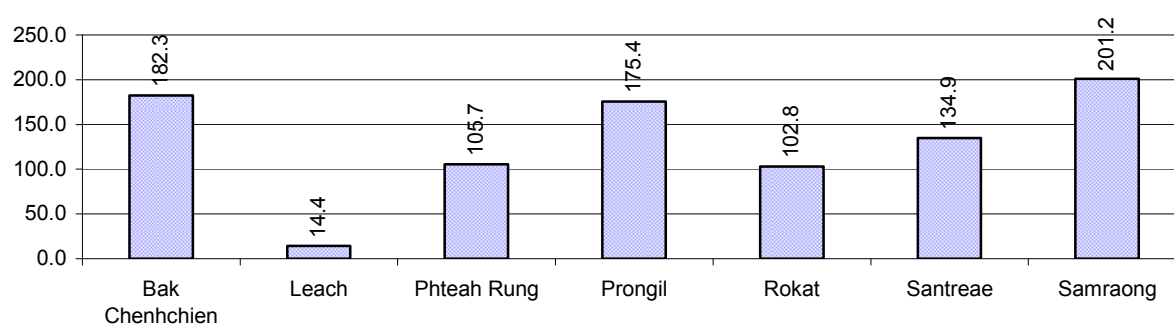
Note: Calculated as a percentage of the total number of families

3.3.14 Ratio of people to Latrines over 3 years

Description	2006 Ratio	2007 Ratio	2008	
			Ratio	Number
Ratio of people to latrines	82.2	75.0	65.0	999.0

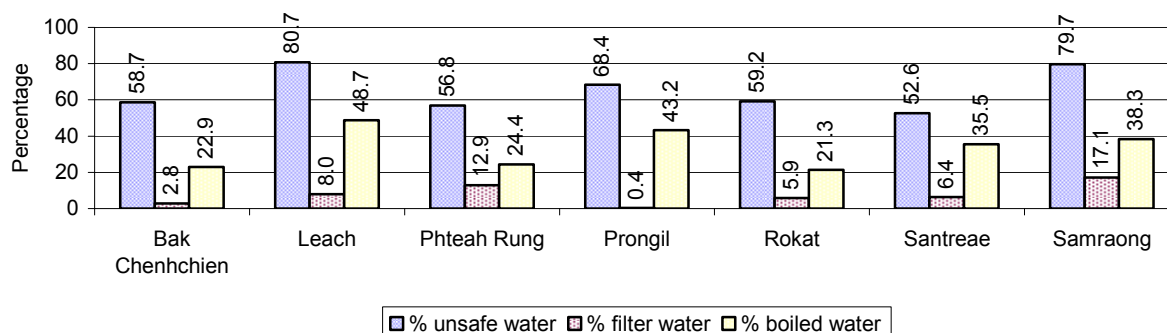
Note: Ratio calculated by dividing the number of houses with latrines by the total population

3.3.15 Ratio of People to Latrines, by Commune, in 2008



Note: Ratio calculated by dividing the number of houses with latrines by the total population in a Commune.

3.3.16 Percentage of Families drinking boiled, filtered or unsafe Water, by Commune, in 2008



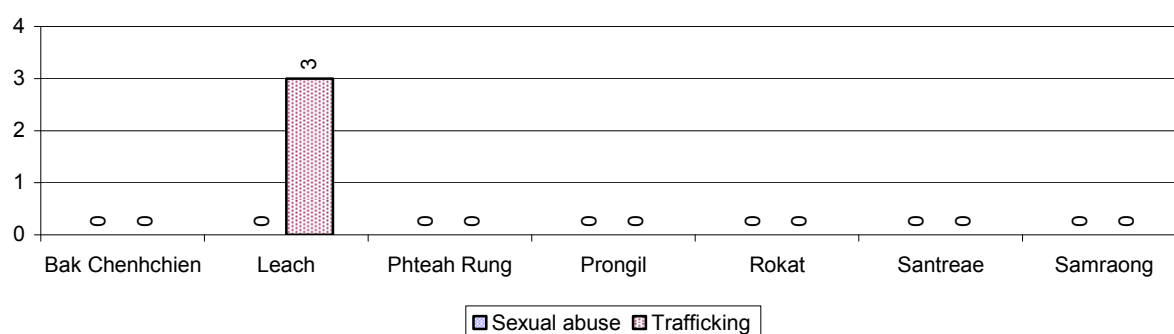
Note: Calculated as a percentage of the total number of families in each commune.

3.4 Vulnerable groups

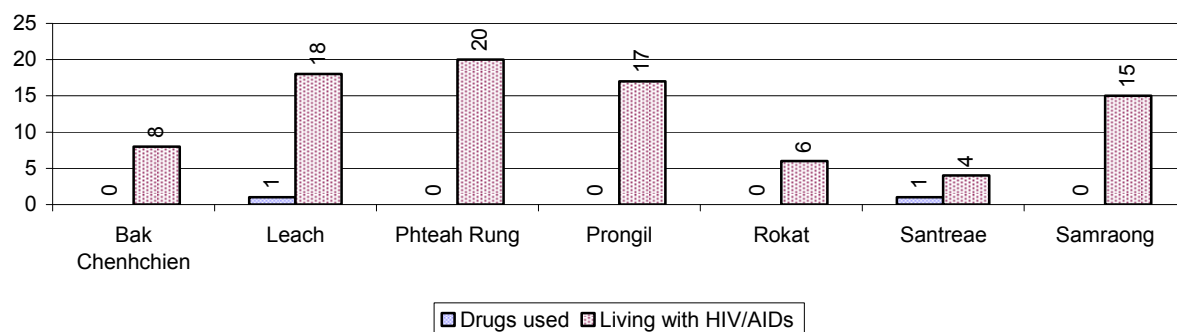
3.4.1 Vulnerable Groups in need of special Protection over 3 years

Vulnerable groups	2006	2007	2008
Victims of sexual abuse	9 person(s)	3 person(s)	0 person(s)
Victims of human trafficking	2 person(s)	0 person(s)	3 person(s)
Families with family member(s) using drugs	7 families	0 families	2 families
Families with family member(s) living with HIV/AIDS	73 families	76 families	88 families
Children under 18 yrs old whose parent died of AIDS	198 person(s)	220 person(s)	201 person(s)
Orphaned/abandoned children under 18 yrs old (all cases)	335 person(s)	737 person(s)	845 person(s)
Elderly persons without guardian	197 person(s)	176 person(s)	205 person(s)
Disabled people able to earn an income	48 person(s)	114 person(s)	120 person(s)
Disabled people unable to earn an income	63 person(s)	104 person(s)	110 person(s)
Disabled people under 18 yrs old	36 person(s)	25 person(s)	27 person(s)
Victims of natural disasters	2,128 families	702 families	496 families
Victims of land mines and unexploded weapons	78 person(s)	10 person(s)	40 person(s)

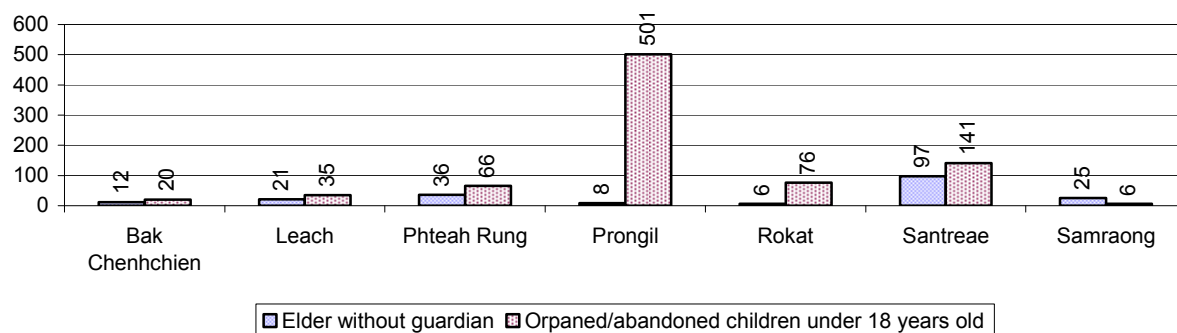
3.4.2 Registered Victims of sexual Abuse or Trafficking, by Commune, for 2008



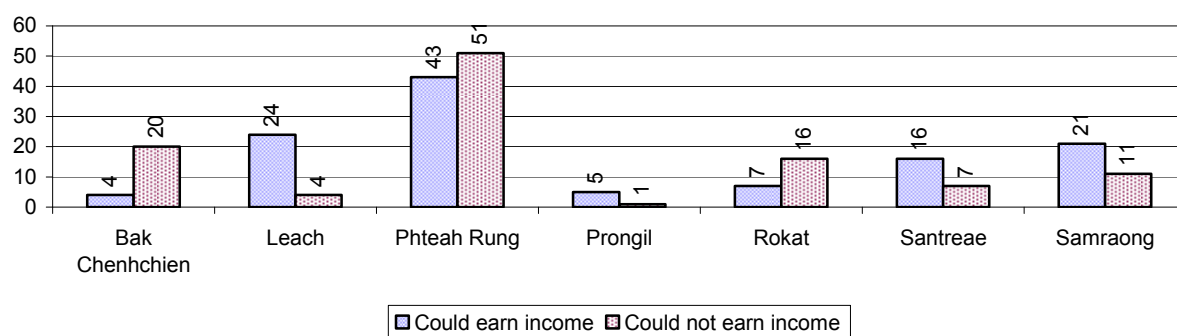
3.4.3 Registered Families with Member(s) using Drugs or living with HIV/AIDS, by Commune, for 2008



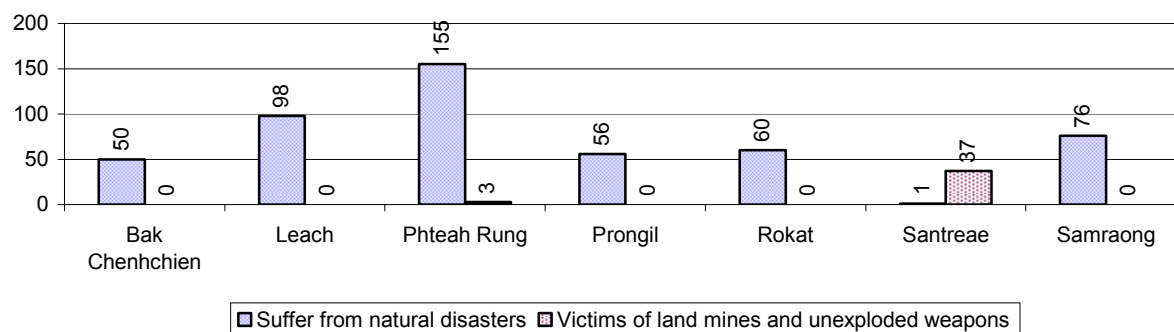
3.4.4 Elderly Persons without a Guardian and orphaned/abandoned Children under 18 years old, by Commune, for 2008



3.4.5 Number of disabled People who could or could not earn an Income, by Commune, for 2008



3.4.6 Number of Families who suffered from natural Disasters, and number of Victims of Land Mines and unexploded Weapons, by Commune, in 2008



3.5 Migration

3.5.1 Migration over 3 years

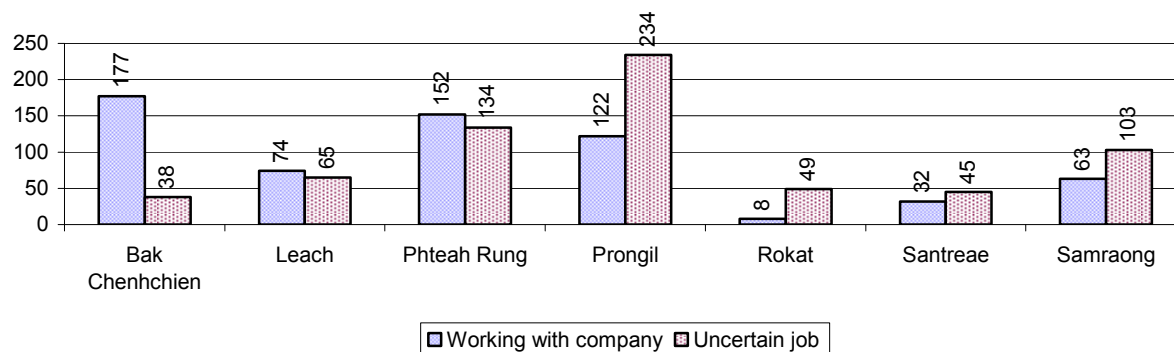
Description	2006	2007	2008
Number of families permanently in-migrated	113 families	78 families	113 families
Total number of people	536 person(s)	345 person(s)	542 person(s)
Total number of female	286 person(s)	187 person(s)	270 person(s)
Number of families permanently out-migrated	111 families	66 families	48 families
Total number of people	417 person(s)	285 person(s)	238 person(s)
Total number of female	215 person(s)	142 person(s)	128 person(s)
Number of families staying temporarily	99 families	38 families	78 families
Total number of people	397 person(s)	156 person(s)	325 person(s)
Total number of female	214 person(s)	79 person(s)	162 person(s)

3.5.2 Job Migration

Description	2006	2007	2008
Number of people migrated to work with company/factory	2%	3%	2%
Number of people migrated to work, but have uncertain jobs	2%	2%	2%

Note: Calculated as a percentage of the total population of 18-60 year olds

3.5.3 Number of People working outside their home Villages in a Company/Factory or with an uncertain Job in 2008

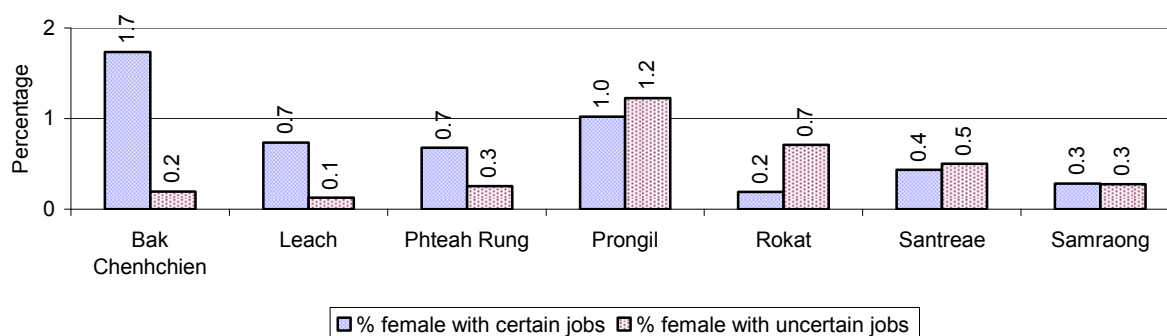


3.5.4 Female migration over 3 years

Description	2006 %	2007 %	2008	
			%	Number
Total number of migrants	1.8%	2.2%	2.0%	1,296 person(s)
Number of female migrants	1.1%	1.3%	1.1%	732 person(s)
Total number of migrants, who go to work with company/factory (with certain jobs)	0.9%	1.3%	1.0%	628 person(s)
Number of female migrants with certain jobs	0.7%	0.9%	0.7%	458 person(s)
Total number of migrants with uncertain jobs	0.9%	0.9%	1.0%	668 person(s)
Number of female migrants with uncertain jobs	0.4%	0.4%	0.4%	274 person(s)

Note: Calculated as a percentage of the total population

3.5.5 Percentage female Migrants with certain and uncertain Jobs, by Commune, in 2008



Note: Calculated as a percentage of the total population of the commune

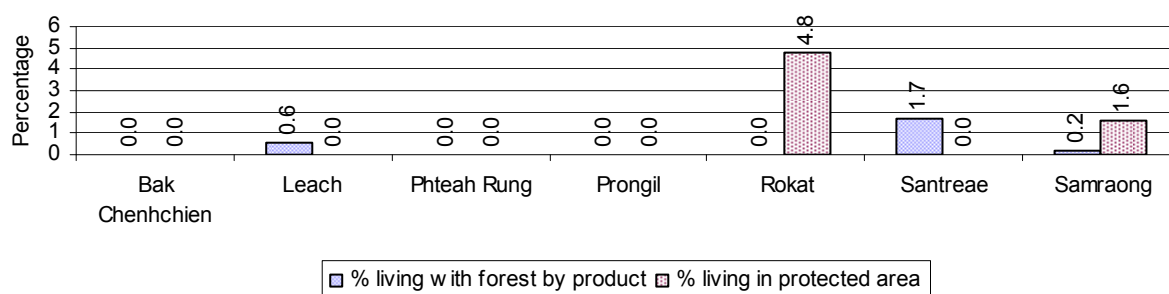
4 Natural Resources and Environment (NRE)

4.1 Families involved with NRE issues over 3 years

Description	2006 %	2007 %	2008	
			%	Number
Families living with forest by products	1 %	0 %	0 %	34 families
Families living in a protected area	4 %	0 %	1 %	80 families
Houses with access to garbage collection service	0 %	2 %	0 %	2 families
Families affected by environmental pollution	0 %	0 %	2 %	200 families
Families using chemical fertilizer	31 %	34 %	31 %	3,793 families
Families using chemical pesticide	8 %	7 %	7 %	826 families

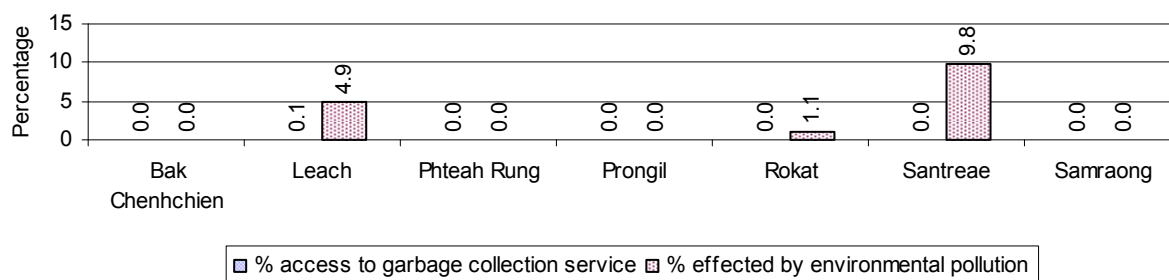
Note: Calculated as a percentage of the total number of families

4.2 Percentage of Families involved with Natural Resource issues, by Commune, for 2008



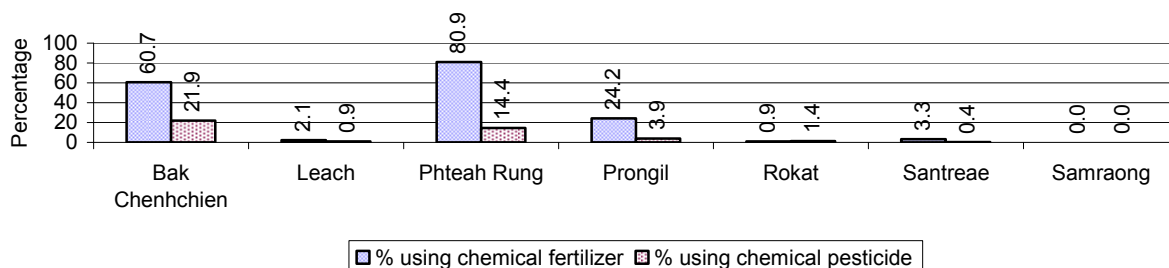
Note: Calculated as a percentage of the number of families in each commune

4.3 Percentage Houses with access to Garbage collection and Families affected by environmental Pollution, by Commune, for 2008



Note: Garbage collection is calculated as a percentage of the total number of houses in each commune and families affected by environmental pollution is calculated as a percentage of the total number of families in each commune.

4.4 Percentage Families using chemical Fertilizer and chemical Pesticides, by Commune, for 2008



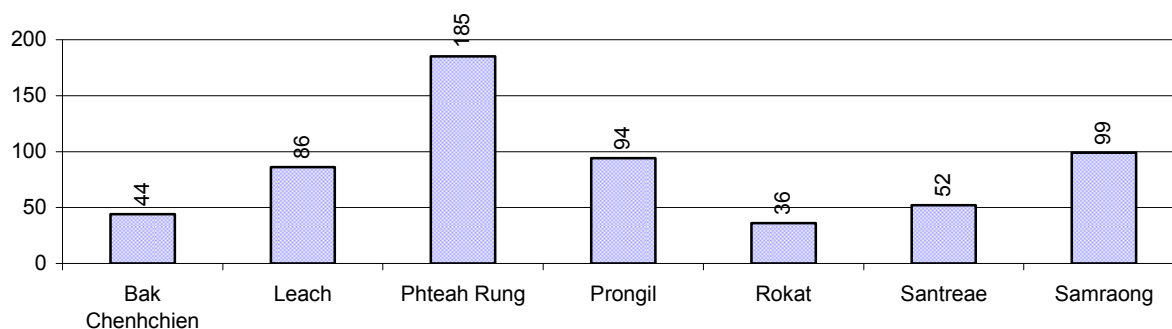
Note: Calculated as a percentage of the total number of families in each commune

5 Administration and Security

5.1 Birth Registration across 3 years

Description	2006	2007	2008
Number of infants to be registered	839 person(s)	863 person(s)	800 person(s)
Number of unregistered infants the year	595 person(s)	556 person(s)	596 person(s)
Percentage of infants unregistered	71 %	64 %	75 %

5.2 Number of unregistered Infants born in 2008, by Commune

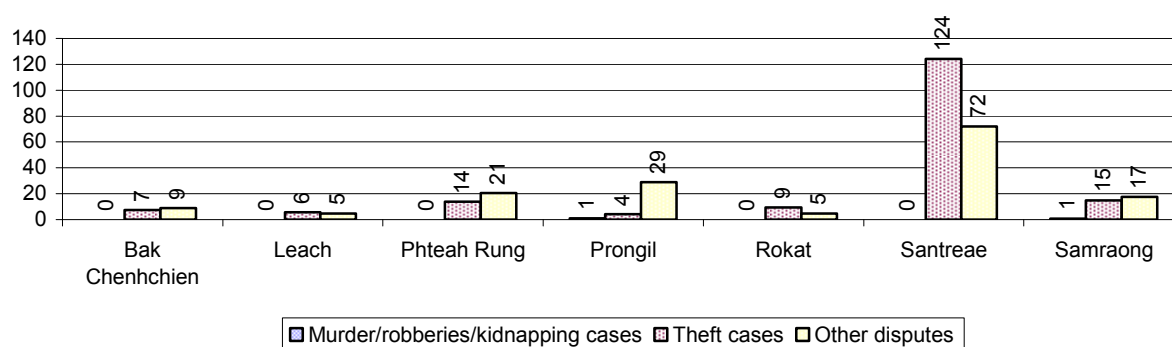


5.3 Registered criminal Cases over 3 years

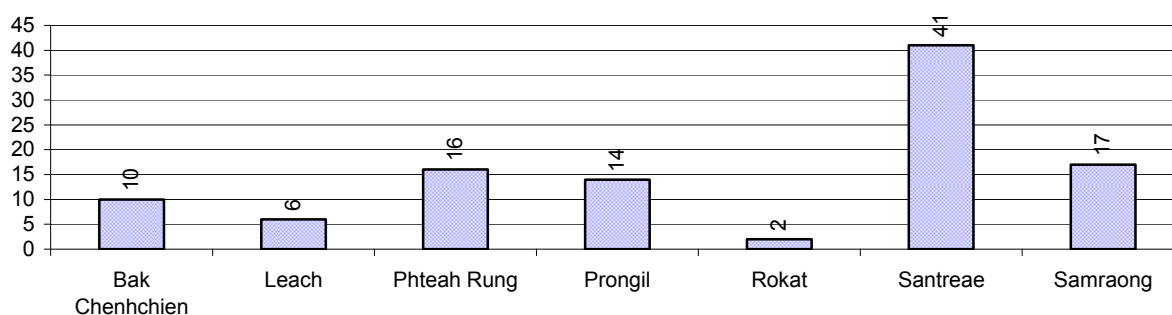
Description	2006	2007	2008
Murders, robberies and kidnapping cases	8 case(s)	0 case(s)	2 case(s)
Theft cases	96 case(s)	64 case(s)	120 case(s)
land dispute cases	66 case(s)	83 case(s)	106 case(s)
Other disputes cases	103 case(s)	82 case(s)	132 case(s)

Note: this reflects only registered criminal cases

5.4 Registered criminal Cases per 10,000 people, by Commune, for 2008



5.5 Number of registered Land Disputes, by Commune, in 2008

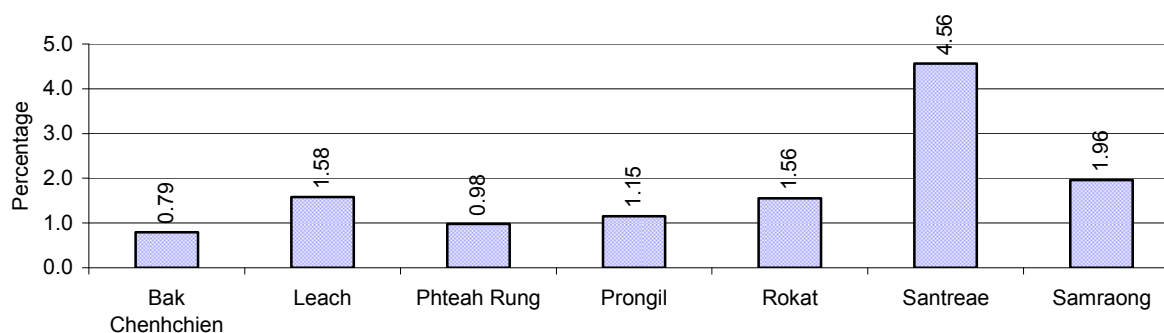


6 Gender

6.1 Registered Domestic Violence over 3 years

Description		2006	2007	2008
Families experiencing domestic violence		228 families	234 families	199 families(s)
% families experiencing domestic violence		2 %	2 %	2 %
Domestic violence cases reported by village chiefs		114 case(s)	70 case(s)	98 case(s)
Type	Physical violence	40 case(s)	37 case(s)	47 case(s)
	Sexual violence	6 case(s)	1 case(s)	2 case(s)
	Mental violence	38 case(s)	23 case(s)	42 case(s)
	Household economic violence	30 case(s)	9 case(s)	7 case(s)
Number of administrative decisions on domestic violence		0 case(s)	34 case(s)	13 case(s)
% of administrative decisions on domestic violence		0 %	49 %	13 %

6.2 Percentage of registered cases of Families experiencing domestic Violence, by Commune, in 2008



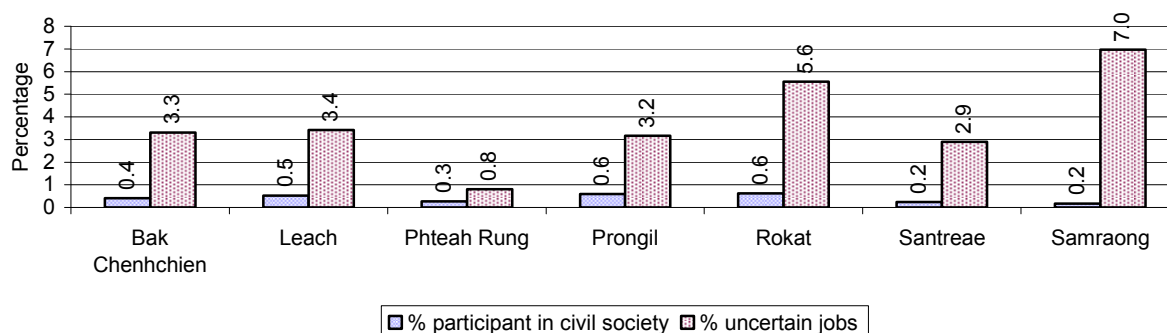
Note: Calculated as a percentage of the total number of families in each commune

6.3 Women's involvement over 3 years

Description	2006 %	2007 %	2008	
			%	Number
People participating in civil society	1%	2%	1%	568 person(s)
Women participating in civil society	0%	1%	0%	237 person(s)
People, 18-60 yrs, with uncertain/irregular jobs	4%	10%	7%	1,953 person(s)
Women, 18-60 yrs, with uncertain/irregular jobs	2%	6%	4%	1,028 person(s)

Note: Participation can be in NGOs, CBOs, credit groups, women's unions, parties and other civil society organizations. The first section is calculated as a percentage of the total population. The second section is calculated as a percentage of the total 18-60 year old population.

6.4 Percentage of Female Participants in Civil Society and of 18-60 year women with uncertain Jobs, by Commune, in 2008



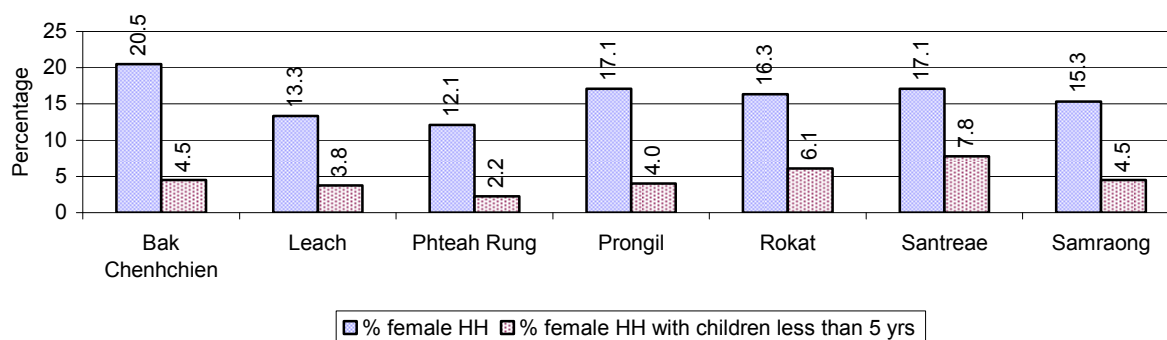
Note: Percentage of female participants in civil society is calculated as a percentage of the total population per commune. The percentage of 18-60 years old women with uncertain jobs is calculated as a percentage of the total 18-60 year old population per commune.

6.5 Female-headed Households over 3 years

Families with:	2006	2007	2008	
	%	%	%	Number
Households in which a woman is the family head	16%	16%	15%	1,874 families
Households in which a woman is the family head with children of less than 5 yrs	4%	5%	4%	513 families

Note: Calculated as a percentage of the total number of families

6.6 Percentage female-headed Households and with Children of less than 5 years old, by Commune, in 2008



Note: Calculated as a percentage of the total number of families in each commune
HH: Headed Household

7 Indigenous People in the District

7.1 Ethnic Minorities in the District over 3 years

Race of indigenous	2006		2007		2008	
	# families	# population	# families	# population	# families	# population
Phnong	0 families	0 person(s)	0 families	0 person(s)	0 families	0 person(s)
Kouy	0 families	0 person(s)	0 families	0 person(s)	0 families	0 person(s)
Stieng	0 families	0 person(s)	0 families	0 person(s)	0 families	0 person(s)
Mil	0 families	0 person(s)	0 families	0 person(s)	0 families	0 person(s)
Kroal	0 families	0 person(s)	0 families	0 person(s)	0 families	0 person(s)
Thmorn	0 families	0 person(s)	0 families	0 person(s)	0 families	0 person(s)
Khaonh	0 families	0 person(s)	0 families	0 person(s)	0 families	0 person(s)
Tompouonn	0 families	0 person(s)	0 families	0 person(s)	0 families	0 person(s)
Charay	0 families	0 person(s)	0 families	0 person(s)	0 families	0 person(s)
Kroeung	0 families	0 person(s)	0 families	0 person(s)	0 families	0 person(s)
Kavet	0 families	0 person(s)	0 families	0 person(s)	0 families	0 person(s)
Saouch	0 families	0 person(s)	0 families	0 person(s)	0 families	0 person(s)
Lun	0 families	0 person(s)	0 families	0 person(s)	0 families	0 person(s)
Kachak	0 families	0 person(s)	0 families	0 person(s)	0 families	0 person(s)
Praov	0 families	0 person(s)	0 families	0 person(s)	0 families	0 person(s)
Others	62 families	384 person(s)	177 families	865 person(s)	173 families	793 person(s)
Total	62 families	384 person(s)	177 families	865 person(s)	173 families	793 person(s)

Note: "Others" refer to other ethnic groups which are not listed.

7.2 Other Minorities in the District over 3 years

Minority	2006		2007		2008	
	# families	# population	# families	# population	# families	# population
Khmer Islamic	161 families	745 person(s)	34 families	104 person(s)	212 families	1,185 person(s)
Vietnamese	16 families	50 person(s)	14 families	76 person(s)	11 families	26 person(s)
Laos	8 families	12 person(s)	8 families	12 person(s)	5 families	10 person(s)

Note: Number of indigenous and minority population are additional data, so some village may not recorded.

SECTION C: PLANS AND PROJECTS

8 Priorities and Plans

8.1 Priorities of Commune Councils for 2009 in the District by Sector

The District Priority Activity Matrix (DPAM) data are taken from the CDPD. The DPAM is used for the District Integration Workshop (DIW), to show what kind of projects the commune has proposed in their Commune Investment Plan (CIP) for 2009. Donors, departments and other agencies then consider which projects they want to support and which projects they are not interested in. This results in Temporary Agreements between the Commune Council and the Supporter (NGO, Department, private donor, etc), as shown in table 8.2

No.	Project Name	Bak Chenhchien	Leach	Phteah Rung	Prongil	Rokat	Santreae	Samraong	Req. Project
		150401	150402	150403	150404	150405	150406	150407	Total
Economic									
1	Compost fertilizer training		8 training	13 time	3 training		1 Team	11 Team	5
2	Chemical and pesticide application training	6 time	8 training	13 time	3 training		4 training		9
3	Vegetable growing training		8 training						1
4	Mixed farming system training	6 training						11 Team	2
5	Subsidiary cropping technique training	90 person							1
6	Mushroom growing training				35 Kg				2
7	Natural rice cultivation practice				3 training				1
8	Rice cultivation technique training		8 training						1
9	Animal vaccination request	3253 Head	2 time	9525 Head	2 time	8 time	4 time	22 time	8
10	Village veterinary training		1 training			12 time			3
11	Animal raising training		3 training			4 Team	4 training		4
12	Pig raising training	30 Head							1
13	Chicken raising training	6 time							2
14	Rice seed request		2000 Kg	2000 Kg	7 T		4 T		4
15	Fruit trees seedling request		1200 Tree		1000 Tree				2
16	Calf for raising request		40 Head		70 Head		40 Head		3
17	Sow for raising request		80 Head	39 Head	70 Head		80 Head		4
18	Chicken request		180 Head		700 Head		400 Head		3
19	Vegetable seed and farming tools request		80 Kg						1
20	Fuel request		2000 Liter						1
21	Fish raising training	30 person							1
22	Fish fingerling request					1200 Head			1
23	Road maintenance committee							5 training	1
24	Earth road construction	8010 m	7350 m	24 m	30 km	11200 m	4983 m	58300 m	7

District Data Book 2009: Development Plans and Projects

No.	Project Name	Bak Chenhchien	Leach	Phteah Rung	Prongil	Rokat	Santreae	Samraong	Req. Project
		150401	150402	150403	150404	150405	150406	150407	Total
25	Laterite/natural gravel road construction	3100 m		8500 m	9 km	8000 m	3450 m	10455 m	6
26	Culvert construction				23 place		14 Line		2
27	Bridger construction				4 place				1
28	Earth road repairing		3600 m		11700 km				2
29	Laterite/natural gravel road repairing	9150 m	4500 m						2
30	Culvert repairing	8 place	8 place						2
31	Bridger repairing				4 place				1
32	Canal construction				1 km				1
33	Dam construction		250 m		322272 m3				2
34	Pumping station construction				16 set				1
35	Spillway construction						120 m		1
36	Water gate plug construction						1 place		1
37	Reservoirs construction		16 Reservoir						1
38	Irrigation pond construction				4 place				1
39	Canal repairing	13000 m	16800 m	15 m	9 km	4400 m		6700 m	6
40	Reservoirs repairing			450 m3		5 place			3
41	Irrigation pond repairing		2025 m3						1
42	Cash credit		8 Team	26 Team	7 place		80 family		4
43	Cow bank	80 Head							1
44	Livestock bank				3 Team				1
45	Market place creation/construction				7 place				1
46	Mat-forming handicraft					4 Team			1
Social									
1	Family planning						4 time		1
2	Antenatal care		12 time						1
3	HIV/AIDS awareness education							11 time	1
4	Health/hygiene education for local people		1 training	13 time					2
5	Women and children health care education	6 time							1
6	Smoking reduction through health education		8 time						1
7	Leaflets and posters distribution		102 family						1
8	Maternal health education		1 training		3 training				2

District Data Book 2009: Development Plans and Projects

No.	Project Name	Bak Chenhchien	Leach	Phteah Rung	Prongil	Rokat	Santreae	Samraong	Req. Project
		150401	150402	150403	150404	150405	150406	150407	Total
9	Children immunization provision				20000 bottle				1
10	Children and women vaccination		3 time						1
11	Mental health care education/treatment			39 person					1
12	Health clinic service			357 person					1
13	Health network creation/strengthening				1 training				1
14	TBA training		1 training		1 training		4 time		3
15	Mosquito nets distribution/treatment		450 mosqui-net		8000 mosqui- net	8 time			3
16	Malaria drug treatment provision				36000 bottle				1
17	Mosquito larvae removal treatment		160 Kg		350 Kg				2
18	Dengue fever education programme						4 time		1
19	Birth delivery package/birth attendant equipment need						12 set		1
20	Deworming of school children		1 time						1
21	Latrine construction	120 toilet	100 toilet		175 toilet	40 toilet	84 toilet	110 toilet	6
22	Sanitation education		25 training		2 time				2
23	Commune health center construction	1 building							1
24	Patient transportation means established	204 time							1
25	Village health post repairing				7 place				1
26	Water filter equipment supply		100 Container	2980 Container	140 Container	400 Container		220 Container	5
27	Giant water jar provision			39 Jar	70 Jar				2
28	Wells water testing		8 time						1
29	Pump wells construction				25 well	20 well			2
30	Ring wells construction		16 well	39 well	175 well		13 well		4
31	Ponds construction					8 Pond		3 place	2
32	Pump wells repairing		6 well		30 well	8 well		11 place	4
33	Ring wells repairing		13 well		32 well		14 well		3
34	Ponds repairing			1 Pond					1
35	Literacy class			4 class			7 class	13 class	3
36	Literacy class materials support						7 class		1
37	Junior high school construction				6 room				1

District Data Book 2009: Development Plans and Projects

No.	Project Name	Bak Chenhchien	Leach	Phteah Rung	Prongil	Rokat	Santreae	Samraong	Req. Project
		150401	150402	150403	150404	150405	150406	150407	Total
38	Senior high school construction	1 building							1
39	School building			36 room		2 building	3 building		3
40	Primary school creation/construction		2 building		12 room				2
41	Kindergarten school construction/repair				7 room				1
42	Motivating pupil's parents for school enrollment	6 time							1
43	School enrollment encouragement project						3 time		1
44	Poor pupils enrollment support							11 person	1
45	School enrollment motivation committee							1 time	1
46	Vocational training		1 training	2 time	21 person		4 training		6
47	Non-formal class teaching/generating		1 building						1
48	Flood refuge mound/temporary shelter provision					1 place			1
49	Emergency relief for the poor		3 time						1
50	Orphan children assistance/support						2 Team		1
51	Orphan center construction				1 Team				1
52	Elderly association formation/support					4 Team			1
53	Elderly/children/disable protection association formation							11 place	1
NREM									
1	Environmental awareness and law education		8 training				4 training	11 time	3
2	Fishery law education	6 time	8 training	13 time	1 training		4 training	11 time	6
3	Forestry law education		8 training	13 time	1 training	4 time	3 training	10 time	7
4	Wildlife protection law education			13 time			3 training		2
5	Organizing environment day		1 time						1
6	Tree plantation project	500 Tree	800 Tree	5000 Tree	50000 Tree		900 Tree		5
7	Illegal fishing prevention	6 time		13 time		4 time	4 time	11 time	5
8	Strengthening fishery community				1 place				1
9	Natural water ways/reservoirs rehabilitation/conservation		2100 m3		20000 m3	1 place	1 Team	8 time	7
10	Community forestry activities support		6 time		6 place	2 time	9200 m	3 place	6
11	Forest protection strengthening		3 training	13 time			460 Tree	11 time	4
12	Solving rubbish problems		7 person						1

District Data Book 2009: Development Plans and Projects

No.	Project Name	Bak Chenhchien	Leach	Phteah Rung	Prongil	Rokat	Santreae	Samraong	Req. Project
		150401	150402	150403	150404	150405	150406	150407	Total
13	Public rubbish bin sitting			15 Garbage bin			20 Garbage bin		2
14	Waste collection service creation/improvement		1 time						1
15	Drainage canal construction/rehabilitation		9000 m						1
16	Environmental pollution reduction		8 time						1
17	Waste control measurement						4 training		1
Administration and Security									
1	Civil registration encouragement		1 time						1
2	CC capacity strengthening						1 time		2
3	Commune study tour				1 time				1
4	Human rights and law training		1 time						1
5	CC forum organizing			2 time			2 time		2
6	Project implementation/administration strengthening		1 training		1 time				2
7	Commune office construction/renovation				1 building				1
8	Office supply for commune admin operation				1 set				2
9	Land law dissemination	6 time	8 training	13 time	1 time	4 time		11 time	7
10	Provision of land titles/certificates	10000 doc		13527 doc		846 doc	51 doc	1100 doc	5
11	Village/commune border identification			4 time	6 village	50 km			3
12	Land conflict resolution committee strengthening				2 place				1
13	Social land concession project						600 ha		1
14	People guard activities formation/strengthening		8 training	13 Team	20 time	14 Team	4 Team	11 Team	7
15	Drug and related law education		1 training		1 time			11 time	3
16	Gambling control/elimination activation		8 training		2 training	4 time	4 time		5
17	Stealing elimination activation					4 time			1
18	Gangs gathering educated for local security		1 training	13 time					2
19	Temporary dwellers management/control				21 time				1
20	Local police capacity building/strengthening		1 training		1 time				2

District Data Book 2009: Development Plans and Projects

No.	Project Name	Bak Chenhchien	Leach	Phteah Rung	Prongil	Rokat	Santreae	Samraong	Req. Project
		150401	150402	150403	150404	150405	150406	150407	Total
21	Traffic sign installation		7 piece		7 piece		9 piece		3
22	Flood rescue capacity building/strengthening			2 training					1
23	Traffic accident prevention							4 place	1
24	Demining project			5 time					1
25	Mine and UXO awareness education						4 time		1
26	Information board provision/creation/built			13 Info-board					1
27	Human right and related law education				1 time				1
28	Penal and civil law dissemination		1 time		1 time				2
29	Local information dissemination			13 time					1
30	Traffic law and public order dissemination		2 training	13 time	1 time				3
31	Wedding/family law dissemination						1 time		1
32	Water pump group establishment		8 set						1
Gender									
1	Gender mainstreaming concept training				7 time	4 training		11 training	3
2	Women role in development strengthening/dissemination		1 time		1 time				2
3	Gender and child rights dissemination		1 time	13 time					2
4	Women & Children FP strengthening		1 time		4 time	1 training	2 time	1 training	6
5	Gender network meeting support/activation				1 time				1
6	Woman and children's rights dissemination	6 time							1
7	Women and men roles/rights dissemination	6 time	2 time				4 time		3
8	Law against domestic violence dissemination	6 time	8 time	13 time	7 time	4 time	8 time	11 time	8
9	Law against trafficking dissemination	6 time	2 time	13 time	7 time	4 time	4 time	11 time	7
10	Swindle trick of broker prevention education						4 time		1

Source: CDPD – District Priority Matrix

8.2 Temporary Agreements by Commune, for 2009²

At the District Integration Workshop (DIW) the Supporters (donors, agencies, private donors, NGOs, etc.) identify which projects/activities they would like to support or they put forward their own projects to be implemented in a particular commune. Once there is agreement between Commune Councils and Supporters on specific projects a **Temporary Agreement** is signed by the commune and the Supporter to show their mutual commitment to the identified projects/activities.

It is important to keep in mind that such Temporary Agreements do not necessarily result in implementation.

8.2.1 Temporary Agreements for 2009 as per DIW 2008 for Commune: Bak Chenhchien

Commune GIS	Commune	Temporary Agreements				Supporter	Funding Source	Listed in CIP befor DIW
		Project Name	Quantity	Unit	Est.Cost (K.Riels)			
Economic								
150401	Bak Chenhchien	Children playing activities support	12	time	480	Punleu Komar Kampuchea Organization		<input type="checkbox"/>
150401	Bak Chenhchien	Funding for job creation	9	Team	3340	Future Light Orphanage		<input type="checkbox"/>
150401	Bak Chenhchien	Rice bank establish	1	place	1000	Future Light Orphanage		<input type="checkbox"/>
150401	Bak Chenhchien	Family fish raising training	1	training	300	Department of Agriculture Forestry and Fisheries		<input type="checkbox"/>
150401	Bak Chenhchien	Training and demonstration on safety application of pesticide on rice crop	2	training	504	Department of Agriculture Forestry and Fisheries		<input type="checkbox"/>
150401	Bak Chenhchien	Mixed farming system training	2	training	1000	Future Light Orphanage		<input type="checkbox"/>
Social								
150401	Bak Chenhchien	HIV/AIDS awareness education training	1	training	79	Future Light Orphanage		<input type="checkbox"/>
150401	Bak Chenhchien	Vocational training	12	Month	5000	Department of Women		<input type="checkbox"/>
150401	Bak Chenhchien	Transport OVC's children to health center	20	time	80	Punleu Komar Kampuchea Organization		<input type="checkbox"/>
150401	Bak Chenhchien	HIV/AIDS awareness education training	1	training	68	Punleu Komar Kampuchea Organization		<input type="checkbox"/>

² Not all the data from the CDPD has been translated to English, this has resulted in some cells in the TA tables being blank.

District Data Book 2009: Development Plans and Projects

Commune GIS	Commune	Temporary Agreements				Supporter	Funding Source	Listed in CIP befor DIW
		Project Name	Quantity	Unit	Est.Cost (K.Riels)			
150401	Bak Chenhchien	Child playing concept training	1	training	48	Punleu Komar Kampuchea Organization		<input type="checkbox"/>
150401	Bak Chenhchien	School materials support to poor pupils	1	time	240	Punleu Komar Kampuchea Organization		<input type="checkbox"/>
150401	Bak Chenhchien	HIV/AIDS awareness and non-discriminating against HIV/AIDS carriers dissemination	1	training	193	Department of of Religions and Cults		<input type="checkbox"/>
150401	Bak Chenhchien	Nutrition support to OVC children	12	Month	2064	Punleu Komar Kampuchea Organization		<input type="checkbox"/>
150401	Bak Chenhchien	Vocational skill training	1	training	11200	Department of Education Youth and Sports		<input type="checkbox"/>
150401	Bak Chenhchien	Literacy class operation	2	class	9000	Department of Education Youth and Sports		<input type="checkbox"/>
150401	Bak Chenhchien	Social psychology training	1	training	72	Punleu Komar Kampuchea Organization		<input type="checkbox"/>
NREM								
150401	Bak Chenhchien	Fishery law education	4	training	1200	Department of Agriculture Forestry and Fisheries		<input type="checkbox"/>
150401	Bak Chenhchien	Environmental awareness education	1	training	79	Future Light Orphanage		<input type="checkbox"/>
150401	Bak Chenhchien	Forestry law education	1	training	79	Future Light Orphanage		<input type="checkbox"/>
Administration and Security								
150401	Bak Chenhchien	Land law dissemination	1	training	79	Future Light Orphanage		<input type="checkbox"/>
150401	Bak Chenhchien	Community strengthening at village level	4	training	370	Future Light Orphanage		<input type="checkbox"/>
150401	Bak Chenhchien	Land component support land use planning	1	time	14000	Department of Land Management, Urban Planning & Construction		<input type="checkbox"/>
150401	Bak Chenhchien	Commune development forum organizing	1	training	100	Future Light Orphanage		<input type="checkbox"/>
150401	Bak Chenhchien	Commune capacity strengthening	2	training	182	Future Light Orphanage		<input type="checkbox"/>

Commune GIS	Commune	Temporary Agreements				Supporter	Funding Source	Listed in CIP before DIW
		Project Name	Quantity	Unit	Est.Cost (K.Riels)			
150401	Bak Chenhchien	Rights awareness training	1	training	79	Future Light Orphanage		<input type="checkbox"/>
Gender								
150401	Bak Chenhchien	Anti-domestic violence, anti-trafficking laws and women and children rights dissemination	2	training	490	Department of Social and Veteran Affairs and Youth Rehabilitation		<input type="checkbox"/>
150401	Bak Chenhchien	Domestic violence laws dissemination	1	training	193	Department of of Religions and Cults		<input type="checkbox"/>

8.2.2 Temporary Agreements for 2009 as per DIW 2008 for Commune: Leach

Commune GIS	Commune	Temporary Agreements				Supporter	Funding Source	Listed in CIP before DIW
		Project Name	Quantity	Unit	Est.Cost (K.Riels)			
Economic								
150402	Leach	Organic pesticide on vegetable demonstration	2	training	1200	Department of Agriculture Forestry and Fisheries		<input type="checkbox"/>
150402	Leach	Rice seed production training and demonstration	2	training	880	Department of Agriculture Forestry and Fisheries		<input type="checkbox"/>
150402	Leach	Mixed farming system training	2	training	400	Future Light Orphanage		<input type="checkbox"/>
150402	Leach	Funding for job creation	6	training	1604	Future Light Orphanage		<input type="checkbox"/>
150402	Leach	Rice bank establish	1	place	1000	Future Light Orphanage		<input type="checkbox"/>
Social								
150402	Leach	HIV/AIDS awareness education training	1	training	79	Future Light Orphanage		<input type="checkbox"/>
150402	Leach	HIV/AIDS awareness and non-discriminating against HIV/AIDS carriers dissemination	1	training	193	Department of of Religions and Cults		<input type="checkbox"/>
NREM								
150402	Leach	Forestry law education	1	training	79	Future Light Orphanage		✓
150402	Leach	Fishery law education	4	training	1200	Forest administration		✓
150402	Leach	Environmental awareness education	1	training	79	Future Light Orphanage		<input type="checkbox"/>
150402	Leach	Forestry law education	3	time	1200	Forest administration		✓
Administration and Security								

District Data Book 2009: Development Plans and Projects

Commune GIS	Commune	Temporary Agreements				Supporter	Funding Source	Listed in CIP befor DIW
		Project Name	Quantity	Unit	Est.Cost (K.Riels)			
150402	Leach	Rights awareness training	1	training	79	Future Light Orphanage		<input type="checkbox"/>
150402	Leach	Commune development forum organizing	1	time	100	Future Light Orphanage		<input type="checkbox"/>
150402	Leach	Commune capacity strengthening	2	training	182	Future Light Orphanage		<input type="checkbox"/>
150402	Leach	Community strengthening at village level	4	training	370	Future Light Orphanage		<input type="checkbox"/>
150402	Leach	Land component support land use planning	1	time	14000	Department of Land Management, Urban Planning & Construction		<input type="checkbox"/>
150402	Leach	Land law dissemination	1	training	79	Future Light Orphanage		<input type="checkbox"/>
Gender								
150402	Leach	Anti-domestic violence, anti-trafficking laws and women and children rights dissemination	2	training	490	Department of Social and Veteran Affairs and Youth Rehabilitation		<input type="checkbox"/>
150402	Leach	Law against domestic violence dissemination	1	training	193	Department of of Religions and Cults		✓

8.2.3 Temporary Agreements for 2009 as per DIW 2008 for Commune: Phteah Rung

Commune GIS	Commune	Temporary Agreements				Supporter	Funding Source	Listed in CIP befor DIW
		Project Name	Quantity	Unit	Est.Cost (K.Riels)			
Economic								
150403	Phteah Rung	Rice seed production training and demonstration	2	training	880	Department of Agriculture Forestry and Fisheries		<input type="checkbox"/>
150403	Phteah Rung	Mixed farming system training	2	training	400	Future Light Orphanage		<input type="checkbox"/>
150403	Phteah Rung	Funding for job creation	13	training	4642	Future Light Orphanage		<input type="checkbox"/>
150403	Phteah Rung	Rice bank establish	1	place	1000	Future Light Orphanage		<input type="checkbox"/>
150403	Phteah Rung	Weir construction	1	place	4000	Future Light Orphanage		<input type="checkbox"/>
150403	Phteah Rung	Cow-buffalo bank	10	place	16000	Hope Association for Development		<input type="checkbox"/>

District Data Book 2009: Development Plans and Projects

Commune GIS	Commune	Temporary Agreements				Supporter	Funding Source	Listed in CIP befor DIW
		Project Name	Quantity	Unit	Est.Cost (K.Riels)			
Social								
150403	Phteah Rung	School materials support to poor pupils	1	time	960	Punleu Komar Kampuchea Organization		<input type="checkbox"/>
150403	Phteah Rung	HIV/AIDS awareness and non-discriminating against HIV/AIDS carriers dissemination	1	training	193	Department of of Religions and Cults		<input type="checkbox"/>
150403	Phteah Rung	Literacy class operation	4	class	18000	Department of Education Youth and Sports		<input type="checkbox"/>
150403	Phteah Rung	Children playing activities support	48	time	1920	Punleu Komar Kampuchea Organization		<input type="checkbox"/>
150403	Phteah Rung	Vocational skills training (sewing, motor cycle repairing, radio/TV repairing)	1	training	2520	Department of Labor and Vocational Training		<input type="checkbox"/>
150403	Phteah Rung	Child playing concept training	1	training	192	Punleu Komar Kampuchea Organization		<input type="checkbox"/>
150403	Phteah Rung	HIV/AIDS awareness education training	1	training	272	Punleu Komar Kampuchea Organization		<input type="checkbox"/>
150403	Phteah Rung	Transfer OVC children to health center	80	time	800	Punleu Komar Kampuchea Organization		<input type="checkbox"/>
150403	Phteah Rung	Travel and food support to HIV/AIDS carriers children to get OI/ARV services	24	time	960	Punleu Komar Kampuchea Organization		<input type="checkbox"/>
150403	Phteah Rung	School construction	1	building	100000	Hope Association for Development		<input type="checkbox"/>
150403	Phteah Rung	Nutrition support to OVC children	12	Month	8256	Punleu Komar Kampuchea Organization		<input type="checkbox"/>
150403	Phteah Rung	Food assistance to elderly, disabled people and HIV/AIDS carriers	5	person	540	Future Light Orphanage		<input type="checkbox"/>
150403	Phteah Rung	Vocational training	12	Month	5000	Department of Women		<input type="checkbox"/>
150403	Phteah Rung	HIV/AIDS awareness education training	1	training	79	Future Light Orphanage		<input type="checkbox"/>
150403	Phteah Rung	Support to poor children for school enrollment	1	person	150	Future Light Orphanage		<input type="checkbox"/>
NREM								
150403	Phteah	Fishery law education	6	training	1800	Forest administration		<input type="checkbox"/>

District Data Book 2009: Development Plans and Projects

Commune GIS	Commune	Temporary Agreements				Supporter	Funding Source	Listed in CIP before DIW
		Project Name	Quantity	Unit	Est.Cost (K.Riels)			
	Rung							
150403	Phteah Rung	Forestry law education	3	time	1200	Forest administration		<input type="checkbox"/>
150403	Phteah Rung	Environmental awareness education	1	training	79	Future Light Orphanage		<input type="checkbox"/>
150403	Phteah Rung	Forestry law education	1	training	79	Future Light Orphanage		<input type="checkbox"/>
Administration and Security								
150403	Phteah Rung	Community strengthening at village level	4	training	370	Future Light Orphanage		<input type="checkbox"/>
150403	Phteah Rung	Land law dissemination	1	training	79	Future Light Orphanage		<input type="checkbox"/>
150403	Phteah Rung	Rights awareness training	1	training	79	Future Light Orphanage		<input type="checkbox"/>
150403	Phteah Rung	Commune development forum organizing	1	time	100	Future Light Orphanage		<input type="checkbox"/>
150403	Phteah Rung	Commune capacity strengthening	2	training	182	Future Light Orphanage		<input type="checkbox"/>
150403	Phteah Rung	Social psychology training	1	training	288	Punleu Komar Kampuchea Organization		<input type="checkbox"/>
Gender								
150403	Phteah Rung	Domestic violence laws dissemination	1	training	193	Department of of Religions and Cults		<input type="checkbox"/>
150403	Phteah Rung	Anti-domestic violence, anti-trafficking laws and women and children rights dissemination	2	training	490	Department of Social and Veteran Affairs and Youth Rehabilitation		<input type="checkbox"/>
150403	Phteah Rung	New recruited WCFPs capacity strengthening	5	day	84	Department of Women		<input type="checkbox"/>

8.2.4 Temporary Agreements for 2009 as per DIW 2008 for Commune: Prongil

Commune GIS	Commune	Temporary Agreements				Supporter	Funding Source	Listed in CIP befor DIW
		Project Name	Quantity	Unit	Est.Cost (K.Riels)			
Economic								
150404	Prongil	Cow-buffalo bank	10	place	16000	Hope Association for Development		<input type="checkbox"/>
150404	Prongil	Training and demonstration on safety application of pesticide on rice crop	2	training	504	Department of Agriculture Forestry and Fisheries		<input type="checkbox"/>
150404	Prongil	Rice seed production training and demonstration	2	training	880	Department of Agriculture Forestry and Fisheries		<input type="checkbox"/>
150404	Prongil	Mixed farming system training	2	training	400	Future Light Orphanage		<input type="checkbox"/>
150404	Prongil	Rice bank establish	1	place	1000	Future Light Orphanage		<input type="checkbox"/>
150404	Prongil	Credit for women	10	time	12000	Hope Association for Development		<input type="checkbox"/>
150404	Prongil	Eco-system of rice intensification (S.R.I) training	2	training	1000	Department of Agriculture Forestry and Fisheries		<input type="checkbox"/>
150404	Prongil	Ring wells construction	20	well	40000	Hope Association for Development		<input type="checkbox"/>
150404	Prongil	Credit for women	5	time	6000	Hope Association for Development		<input type="checkbox"/>
150404	Prongil	Funding for job creation	11	Team	3774	Future Light Orphanage		<input type="checkbox"/>
150404	Prongil	Canal rehabilitation project	1	Line	4000	Future Light Orphanage		<input type="checkbox"/>
150404	Prongil	Commune marketing group formation	1	Team	750	Future Light Orphanage		<input type="checkbox"/>
Social								
150404	Prongil	Food support to elderly, disabled people and HIV/AIDS carriers	5	person	540	Future Light Orphanage		<input type="checkbox"/>
150404	Prongil	Skills training	1	training	375	Future Light Orphanage		<input type="checkbox"/>
150404	Prongil	HIV/AIDS awareness and non-discriminating against HIV/AIDS carriers dissemination	1	training	193	Department of of Religions and Cults		<input type="checkbox"/>
150404	Prongil	Latrine construction	10	toilet	4000	Hope Association for Development		<input type="checkbox"/>
150404	Prongil	HIV/AIDS awareness education training	1	training	79	Future Light Orphanage		<input type="checkbox"/>
150404	Prongil	Literacy class operation	1	class	4500	Department of Education Youth and Sports		<input type="checkbox"/>

District Data Book 2009: Development Plans and Projects

Commune GIS	Commune	Temporary Agreements				Supporter	Funding Source	Listed in CIP befor DIW
		Project Name	Quantity	Unit	Est.Cost (K.Riels)			
150404	Prongil	Vocational training	12	Month	5000	Department of Women		<input type="checkbox"/>
150404	Prongil	HIV/AIDS self-help group formation	10	time	4000	Hope Association for Development		<input type="checkbox"/>
150404	Prongil	Water filter	20	Container	4000	Hope Association for Development		<input type="checkbox"/>
150404	Prongil	Latrine construction	10	toilet	4000	Hope Association for Development		<input type="checkbox"/>
150404	Prongil	Ring wells construction	10	well	20000	Hope Association for Development		<input type="checkbox"/>
150404	Prongil	HIV/AIDS self-help group formation	5	Team	2000	Hope Association for Development		<input type="checkbox"/>
150404	Prongil	Water filter	30	Container	6000	Hope Association for Development		<input type="checkbox"/>
NREM								
150404	Prongil	Fishery law education	1	training	300	Forest administration		<input type="checkbox"/>
150404	Prongil	Forestry law education	1	training	79	Future Light Orphanage		<input type="checkbox"/>
150404	Prongil	Environmental awareness education	1	training	79	Future Light Orphanage		<input type="checkbox"/>
150404	Prongil	Forestry law education	3	time	1200	Forest administration		<input type="checkbox"/>
Administration and Security								
150404	Prongil	Commune capacity strengthening	2	training	182	Future Light Orphanage		<input type="checkbox"/>
150404	Prongil	Community strengthening at village level	4	training	370	Future Light Orphanage		<input type="checkbox"/>
150404	Prongil	Land law dissemination	1	training	79	Future Light Orphanage		<input type="checkbox"/>
150404	Prongil	Commune development forum organizing	1	time	100	Future Light Orphanage		<input type="checkbox"/>
150404	Prongil	Rights awareness training	1	training	79	Future Light Orphanage		<input type="checkbox"/>
Gender								
150404	Prongil	Domestic violence laws dissemination	1	training	193	Department of of Religions and Cults		<input type="checkbox"/>
150404	Prongil	Anti-domestic violence, anti-trafficking laws and women and children rights dissemination	2	training	490	Department of Social and Veteran Affairs and Youth Rehabilitation		<input type="checkbox"/>
150404	Prongil	New recruited WCFPs capacity strengthening	5	day	84	Department of Women		<input type="checkbox"/>

8.2.5 Temporary Agreements for 2009 as per DIW 2008 for Commune: Rokat

Commune GIS	Commune	Temporary Agreements				Supporter	Funding Source	Listed in CIP befor DIW
		Project Name	Quantity	Unit	Est.Cost (K.Riels)			
Economic								
150405	Rokat	Earth road construction	11200	m	325000	Future Light Orphanage		<input type="checkbox"/>
150405	Rokat	Fingerling supply, 1200 fingerlings	1	time	240	Department of Agriculture Forestry and Fisheries		<input type="checkbox"/>
150405	Rokat	Funding for job creation	6	training	1604	Future Light Orphanage		<input type="checkbox"/>
150405	Rokat	Rice bank establish	1	place	1000	Future Light Orphanage		<input type="checkbox"/>
150405	Rokat	Laterite road construction	8000	m	256000	Forest administration		<input type="checkbox"/>
Social								
150405	Rokat	Latrine and safe water use education training	4	training	581	Department of Rural Development		<input type="checkbox"/>
150405	Rokat	Household latrine construction	12	toilet	5195	Department of Rural Development		<input type="checkbox"/>
150405	Rokat	Skills training	12	Month	5000	Department of Women		<input type="checkbox"/>
150405	Rokat	Literacy class operation	2	class	9000	Department of Education Youth and Sports		<input type="checkbox"/>
150405	Rokat	HIV/AIDS awareness education training	1	training	79	Future Light Orphanage		<input type="checkbox"/>
NREM								
150405	Rokat	Fishery law education	4	training	1200	Department of Agriculture Forestry and Fisheries		<input type="checkbox"/>
150405	Rokat	Forestry law education	1	training	79	Future Light Orphanage		<input type="checkbox"/>
150405	Rokat	Environmental awareness education	1	training	79	Future Light Orphanage		<input type="checkbox"/>
Administration and Security								
150405	Rokat	Commune development forum organizing	1	training	100	Future Light Orphanage		<input type="checkbox"/>
150405	Rokat	Community strengthening at village level	4	training	370	Future Light Orphanage		<input type="checkbox"/>
150405	Rokat	Rights awareness training	1	training	79	Future Light Orphanage		<input type="checkbox"/>
150405	Rokat	Commune capacity strengthening	2	training	182	Future Light Orphanage		<input type="checkbox"/>
150405	Rokat	Land component support land use planning	1	time	14000	Department of Land Management, Urban Planning & Construction		<input type="checkbox"/>
150405	Rokat	Land law dissemination	1	training	79	Future Light Orphanage		<input type="checkbox"/>
Gender								

Commune GIS	Commune	Temporary Agreements				Supporter	Funding Source	Listed in CIP befor DIW
		Project Name	Quantity	Unit	Est.Cost (K.Riels)			
150405	Rokat	New recruited WCFPs capacity strengthening	5	day	84	Department of Women		<input type="checkbox"/>

8.2.6 Temporary Agreements for 2009 as per DIW 2008 for Commune: Santreae

Commune GIS	Commune	Temporary Agreements				Supporter	Funding Source	Listed in CIP befor DIW
		Project Name	Quantity	Unit	Est.Cost (K.Riels)			
Economic								
150406	Santreae	Mixed farming system training	2	training	400	Future Light Orphanage		<input type="checkbox"/>
150406	Santreae	Funding for job creation	8	Team	2472	Future Light Orphanage		<input type="checkbox"/>
150406	Santreae	Rice bank establish	1	place	1000	Future Light Orphanage		<input type="checkbox"/>
Social								
150406	Santreae	HIV/AIDS awareness education training	1	training	79	Future Light Orphanage		<input type="checkbox"/>
150406	Santreae	Vocational training	12	Month	5000	Department of Women		<input type="checkbox"/>
150406	Santreae	Vocational skills training (sewing, motor cycle repairing, radio/TV repairing)	1	training	2880	Department of Labor and Vocational Training		<input type="checkbox"/>
150406	Santreae	Skill training	1	training	375	Future Light Orphanage		<input type="checkbox"/>
150406	Santreae	Literacy class operation	3	class	13500	Department of Education Youth and Sports		<input type="checkbox"/>
NREM								
150406	Santreae	Fishery law education	4	training	1200	Department of Agriculture Forestry and Fisheries		<input type="checkbox"/>
150406	Santreae	Forestry law education	1	training	79	Future Light Orphanage		<input type="checkbox"/>
150406	Santreae	Environmental awareness education	1	training	79	Future Light Orphanage		<input type="checkbox"/>
Administration and Security								
150406	Santreae	Land law dissemination	1	training	79	Future Light Orphanage		<input type="checkbox"/>
150406	Santreae	Rights awareness training	1	training	79	Future Light Orphanage		<input type="checkbox"/>
150406	Santreae	Community strengthening	4	training	370	Future Light Orphanage		<input type="checkbox"/>
150406	Santreae	Commune development forum organizing	1	time	100	Future Light Orphanage		<input type="checkbox"/>
150406	Santreae	Commune capacity strengthening	2	training	182	Future Light Orphanage		<input type="checkbox"/>
150406	Santreae	Land component support land use	1	time	14000	Department of Land		<input type="checkbox"/>

Commune GIS	Commune	Temporary Agreements				Supporter	Funding Source	Listed in CIP befor DIW
		Project Name	Quantity	Unit	Est.Cost (K.Riels)			
		planning				Management, Urban Planning & Construction		
Gender								
150406	Santreae	New recruited WCFPs capacity strengthening	5	day	84	Department of Women		<input type="checkbox"/>

8.2.7 Temporary Agreements for 2009 as per DIW 2008 for Commune: Samraong

Commune GIS	Commune	Temporary Agreements				Supporter	Funding Source	Listed in CIP befor DIW
		Project Name	Quantity	Unit	Est.Cost (K.Riels)			
Economic								
150407	Samraong	Integrated farming systems training	2	training	400	Future Light Orphanage		<input type="checkbox"/>
150407	Samraong	Rice bank establish	1	place	1000	Future Light Orphanage		<input type="checkbox"/>
150407	Samraong	Funding for job creation	11	Team	3774	Future Light Orphanage		<input type="checkbox"/>
Social								
150407	Samraong	Travel and food support to HIV/AIDS carriers children to get OI/ARV services	36	time	1440	Punleu Komar Kampuchea Organization		<input type="checkbox"/>
150407	Samraong	Transport OVC's children to health center	60	time	600	Punleu Komar Kampuchea Organization		<input type="checkbox"/>
150407	Samraong	Skills training	12	Month	5000	Department of Women		<input type="checkbox"/>
150407	Samraong	HIV/AIDS awareness education	1	training	79	Future Light Orphanage		✓
150407	Samraong	Poor pupils enrollment support	17	person	1800	Future Light Orphanage		✓
150407	Samraong	HIV/AIDS awareness education training	1	training	204	Punleu Komar Kampuchea Organization		<input type="checkbox"/>
150407	Samraong	Social psychology training	1	training	216	Punleu Komar Kampuchea Organization		<input type="checkbox"/>
150407	Samraong	Child playing concept training	1	training	144	Punleu Komar Kampuchea Organization		<input type="checkbox"/>
150407	Samraong	School materials support to poor pupils	1	training	720	Punleu Komar Kampuchea Organization		<input type="checkbox"/>
150407	Samraong	Children playing activities support	36	time	1440	Punleu Komar Kampuchea Organization		<input type="checkbox"/>

District Data Book 2009: Development Plans and Projects

Commune GIS	Commune	Temporary Agreements				Supporter	Funding Source	Listed in CIP befor DIW
		Project Name	Quantity	Unit	Est.Cost (K.Riels)			
150407	Samraong	Nutrition support to OVC children	12	Month	6192	Punleu Komar Kampuchea Organization		<input type="checkbox"/>
150407	Samraong	Literacy class operation	3	class	13500	Department of Education Youth and Sports		<input type="checkbox"/>
NREM								
150407	Samraong	Environmental awareness and law education	1	training	79	Future Light Orphanage		✓
150407	Samraong	Fishery law education	6	training	1800	Forest administration		✓
150407	Samraong	Forestry law education	3	time	79	Future Light Orphanage		✓
150407	Samraong	Forestry law education	3	time	1200	Forest administration		✓
150407	Samraong	Eco-tourism awareness dissemination	3	time	432	Department of Tourism		<input type="checkbox"/>
Administration and Security								
150407	Samraong	Community strengthening at village level	4	training	370	Future Light Orphanage		<input type="checkbox"/>
150407	Samraong	Land law dissemination	1	training	79	Future Light Orphanage		<input type="checkbox"/>
150407	Samraong	Commune development forum organizing	1	time	100	Future Light Orphanage		<input type="checkbox"/>
150407	Samraong	Commune capacity building	2	training	182	Future Light Orphanage		<input type="checkbox"/>
150407	Samraong	Committee capacity strengthening	5	time	440	Department of Tourism		<input type="checkbox"/>
Gender								
150407	Samraong	New recruited WCFPs capacity strengthening	5	day	84	Department of Women		<input type="checkbox"/>
150407	Samraong	Children rights, domestic violence and anti-trafficking laws dissemination	2	training	4900	Department of Social and Veteran Affairs and Youth Rehabilitation		<input type="checkbox"/>
150407	Samraong	Rights awareness education	1	training	79	Future Light Orphanage		<input type="checkbox"/>

Source: CDPD, District Level Detail TA resulting from DIW

8.3 Outputs, estimated and actual costs of C/S Fund Projects between 2005 and 2008, by Commune

Commune	Project Type	Budget Year	Output		Quantity	Unit	Unit Cost MR	
			Description	Type			Estimate	Actual
Bak Chenhchien	Irrigation	2005	Double pipe culvert	New	1	Place	4.19	12.05
Bak Chenhchien	Irrigation	2005	Canal	New	1.549	Km	12.58	12.24
Bak Chenhchien	Irrigation	2005	Single pipe Culvert with gate	New	1	Place	8.12	12.05
Bak Chenhchien	Rural Transport	2006	Earth road	New	0.95	Km	25.11	29.36
Bak Chenhchien	Rural Transport	2006	Single pipe culvert	New	3	Place	4.46	29.36
Bak Chenhchien	Irrigation	2007	Single pipe Culvert with gate	New	1	Place	6.38	23.60
Bak Chenhchien	Irrigation	2007	Single pipe Culvert with gate	New	2	Place	24.16	23.60
Bak Chenhchien	Rural Transport	2008	Earth road	New	1.391	Km	39.71	39.69
Leach	Irrigation	2006	Single pipe Culvert with gate	New	1	Place	3.51	40.12
Leach	Irrigation	2006	Canal	Repair	4.097	Km	36.61	40.12
Leach	Rural Transport	2006	Double pipe culvert	New	2	Place	7.86	14.40
Leach	Rural Transport	2006	Single pipe culvert	New	5	Place	5.57	14.40
Leach	Irrigation	2007	Single pipe Culvert with gate	New	4	Place	19.13	15.87
Leach	Irrigation	2007	Canal	Repair	2.142	Km	12.06	20.23
Leach	Rural Transport	2008	Earth road	New	2.164	Km	32.47	32.46
Phteah Rung	Rural Transport	2005	Wood bridge, 5 tonne standard, concrete abutments	New	1	Place	14.15	13.97
Phteah Rung	Rural Transport	2005	Double pipe culvert	New	1	Place	6.17	13.97
Phteah Rung	Rural Transport	2005	Laterite road	New	2.78	Km	13.29	13.00
Phteah Rung	Rural Transport	2006	Laterite road	New	4.817	Km	36.27	41.91
Phteah Rung	Rural Transport	2006	Single pipe culvert	New	3	Place	5.12	5.10
Phteah Rung	Rural Transport	2007	Laterite road	Upgrade	4.1	Km	41.39	40.71
Phteah Rung	Irrigation	2007	Single pipe Culvert with gate	New	1	Place	5.48	4.50
Phteah Rung	Rural Transport	2008	Single pipe culvert	New	1	Place	2.27	41.15
Phteah Rung	Rural Transport	2008	Laterite road	Upgrade	3.6	Km	39.17	41.15
Prongil	Rural Transport	2005	Single cell box culvert	New	1	Place	10.29	13.68
Prongil	Rural Transport	2005	Double pipe culvert	New	1	Place	3.82	13.68
Prongil	Rural Transport	2005	Wood bridge, 5 tonne standard, concrete abutments	New	1	Place	20.37	12.90
Prongil	Rural Transport	2006	Earth road	New	1.1	Km	32.08	31.78
Prongil	Rural Transport	2007	Laterite road	Upgrade	3.1	Km	34.65	34.47
Prongil	Rural Transport	2008	Laterite road	Upgrade	2.2	Km	29.86	32.90
Prongil	Rural Transport	2008	Double pipe culvert	New	1	Place	3.86	32.90

Commune	Project Type	Budget Year	Output		Quantity	Unit	Unit Cost MR	
			Description	Type			Estimate	Actual
Rokat	Rural Transport	2005	Single pipe culvert	New	6	Place	11.25	6.60
Rokat	Education	2006	School furniture	New	2	School room	2.02	41.26
Rokat	Education	2006	Brick school with tile roof	New	2	School room	37.08	41.26
Rokat	Rural Transport	2007	Laterite road	Repair	3	Km	26.12	26.09
Rokat	Rural Transport	2008	Laterite road	Repair	2.15	Km	28.36	28.30
Santreae	Irrigation	2005	Single pipe Culvert with gate	New	5	Place	27.97	26.95
Santreae	Irrigation	2006	Single pipe Culvert with gate	New	2	Place	16.33	16.16
Santreae	Irrigation	2006	Canal	Repeated service	1.399	Km	6.42	7.48
Santreae	Rural Transport	2007	Wood bridge, 5 tonne standard, concrete abutments	New	1	Place	30.82	25.10
Santreae	Rural Transport	2008	Earth road	New	1.2029	Km	34.04	34.04
Samraong	Rural Transport	2005	Double pipe culvert	New	1	Place	5.57	7.50
Samraong	Rural Transport	2005	Single pipe culvert	New	4	Place	6.56	7.50
Samraong	Rural Transport	2005	Laterite road	New	2.05	Km	15.43	15.12
Samraong	Rural Transport	2006	Earth road	New	1.22	Km	36.98	37.21
Samraong	Rural Transport	2007	Earth road	New	1.22	Km	23.00	26.70
Samraong	Rural Transport	2007	Single pipe culvert	New	3	Place	4.02	26.70
Samraong	Rural Transport	2008	Earth road	New	4.555	Km	38.90	47.49
Samraong	Rural Transport	2008	Single pipe culvert	New	2	Place	8.62	47.49

Source: PID

8.4 Total Expenditure on C/S Fund Projects by sector and commune between 2005 and 2008

Sector	Total Cost in Million Riels						
	Bak Chenhchien	Leach	Phteah Rung	Prongil	Rokat	Santreae	Samraong
Education					41.26		
Irrigation	47.89	76.22	4.50			50.59	
Rural Transport	69.05	46.86	155.84	125.73	60.99	59.14	134.03

Source: PID

8.5 Actual 2009 C/S Fund projects by Commune

Commune	Project Type	Project Output		Quantity	Unit	Fund Source (Riels)		
		Description	Type			Total	C/S	Local Contribution
Bak Chenhchien	Rural Transport	Earth road	New	1.5	km	39,697,222	39,447,222	250,000
Bak Chenhchien	Rural Transport	Single pipe culvert 0.6m diameter	New	1	Place	39,697,222	39,447,222	250,000
Bak Chenhchien	Rural Transport	Single pipe culvert 0.6m diameter	New	1	Place	39,697,222	39,447,222	250,000
Bak Chenhchien	Rural Transport	Single pipe culvert 0.8m diameter	New	1	Place	39,697,222	39,447,222	250,000
Leach	Rural Transport	Earth road	New	1.25	km	38,053,141	37,653,141	400,000
Leach	Rural Transport	Triple pipe culvert 1.0m diameter	New	1	Place	38,053,141	37,653,141	400,000
Leach	Rural Transport	Double pipe culvert 0.8m diameter	New	1	Place	38,053,141	37,653,141	400,000
Leach	Rural Transport	Single pipe culvert 0.6m diameter	New	3	Place	38,053,141	37,653,141	400,000

Source: PID

9 District level Projects from 2006 to 2009

District Initiative Projects (DIPs) are funded by Danida, DFID and PSDD (UNDP, DFID and SIDA).

Funding for 2006-2008

Between 2006 and 2008 there were 14 provinces funded by PSDD and 10 by Danida and DFID. The list of provinces and who funded these is below

Danida and DFID funded DIPs:

Kampong Cham	Kampong Speu	Koh Kong	Kratie	Monduliri
Pursat	Ratanakiri	Siem Reap	Sihanoukville	Kep

PSDD funded DIPs:

Banteay Meanchey	Battambang	Kampong Chhnang	Kandal	Phnom Penh
Prey Veng	Svay Rieng	Takeo	Kampong Thom	Preah Vihear
Stung Treng	Kampot	Oddar Meanchey	Pailin	

Funding for 2009

In 2009 there was a change to the number of provinces funded by the two streams. Danida and DFID were still funding the same 10 provinces they had been funding the previous three years, but two more provinces were added *Kampong Thom and Kampot*. Now PSDD funds 12 provinces and Danida and DFID fund 12.

9.1 District Initiative Infrastructure Projects from 2006 to 2009

9.1.1 District Initiative Infrastructure Projects for 2006 to 2008

Date	Project Name	Implementing Agencies	Budget (US\$)	Project Output & Capacity	Number of Beneficiaries
2007	Repair canal 4790 m	Inter-commune	6,000.00		
2007	Demarcation of Ponlei lake (big posts 153, small 403)	Inter-commune	11,138.55		
2008	Canal distributary rehabilitation	Inter-commune	17,000.00	1880m	2 communes, 1600 families
2008	Box culvert with water gate	Inter-commune	3,250.00	1 place	2 communes, 1600 families

9.1.2 District Initiative Infrastructure Projects in 2009

No District Initiative Infrastructure Projects have been implemented in this district for 2009

9.2 District Initiative Service Projects from 2006 to 2009

9.2.1 District Initiative Service Projects for 2006 to 2008

Date	Project Names	Implementing agencies	Budget (US\$)	Project Output & Capacity	Number of Beneficiaries
2007	Organize district integration workshop	District Planning	175.00		
2007	Conduct district profile analysis	District Planning	477.50		
2007	Dissemination on gender in NRM	District WA	836.50		
2007	Dissemination on fishery law	Fishery Admin	689.00		
2007	Dissemination on land law	District Land	1,200.00		
2007	Establish forestry communities (3)	Forest Amin	3,886.50		
2008	Support chicken raising groups	District AGRI	4,549.37	7 groups (7 courses)	77 farmers
2008	Support cash crop production groups	District AGRI	1,093.00	2 courses	20 farmers
2008	Support compost making groups	District AGRI	1,236.00	4 courses	60 farmers

9.2.2 District Initiative Service Projects in 2009

Project Name	Sector	Implementing Agency	Budget	Project outputs/ capacities	No. of Beneficiaries		Progress	Remarks on Issues of Progress
					Total	Female		
Train and establish buffalo raising group in Rokat Prongil and santrei	AGR	Agriculture Office	\$4,620.00	3 groups/12 families	60	30	50%	
Extension on environment and wildlife protection	NRM	Environment Office	\$2,523.50	7 courses/14 billboards	57,700	30,295	50%	

9.3 Inter Commune Council Projects in 2008 and 2009

9.3.1 ICC Projects in 2008

No ICC projects in this district at this time

9.3.2 ICC Projects in 2009

No ICC projects in this district at this time

Source: ICC project, Ministry of Interior (DoLA), -UNDP project for Local Governance – DDLG

9.4 Other Projects in 2008 and 2009

9.4.1 RPRP

There are no RPRP projects being implemented in this district or province at this time. The RPRP is only being implemented in Svay Rieng and Prey Veng

9.4.1.1 RPRP Projects from 2006 to 2008

No RPRP projects in this district at this time

9.4.1.2 RPRP Projects in 2009

No RPRP projects in this district at this time

9.4.2 Seth Korma

9.4.2.1 Seth Koma 2007

There are no Seth Korma projects being implemented in this district or province at this time.

Source: UNICEF

9.4.2.2 Seth Koma 2008

There are no Seth Korma projects being implemented in this district or province at this time.

Source: UNICEF

9.4.2.3 Seth Koma 2009

There are no Seth Korma projects being implemented in this district or province at this time.

Source: UNICEF

SECTION D: SERVICES AND ORGANIZATIONS

10 Infrastructure

10.1 Length of and Expenditure on Roads in 2008, by District

Roads	PUR	Bakan	Kandieng	Krakor	Phnom Kravanh	Pursat	Veal Veng
Length of paved road in the district in Km	868	181	96	122	117	160	192
Length of unpaved roads in the district in Km	1,396	450	172	243	217	112	203
Amount spent on construction of roads in 2008 (\$)	n/a	n/a	n/a	n/a	n/a	n/a	n/a
Amount spent on repair and rehabilitation of roads in 2008 (\$)	164,165	84,800	1,225	n/a	n/a	n/a	n/a

Note 1: Please note that these data are not necessarily complete or correct. The data are derived from government agencies at provincial and district level which used different recording systems, did not always have complete data or were, sometimes, less than willing to share their data.

Note 2: Please be aware that these data are incomplete due to the fact that the amounts for the construction, repair and rehabilitation recorded reflect only funds provided by the government, not the contributions by any other parties.

10.2 Scale of and Expenditure on Irrigation in 2008, by District

Irrigation	PUR	Bakan	Kandieng	Krakor	Phnom Kravanh	Pursat	Veal Veng
Number of irrigation schemes operating in 2008	54	15	13	13	3	6	4
Total nr of hectares under irrigation in dry season 2008	3,118	1,468	144	141	125	1,240	n/a
Total funds spent in 2008 on construction of irrigation systems (\$)	n/a	n/a	n/a	n/a	n/a	n/a	n/a
Total funds spent in 2008 on rehabilitation/repair of irrigation systems (\$)	n/a	n/a	n/a	n/a	n/a	n/a	n/a
Total funds spent in 2008 on operation and maintenance (\$)	n/a	n/a	n/a	n/a	n/a	n/a	n/a

Note 1: Please note that these data are not necessarily complete or correct. The data are derived from government agencies at provincial and district level which used different recording systems, did not always have complete data or were, sometimes, less than willing to share their data.

Note 2: Please be aware that the data above are incomplete as these only reflect funds provided by the government, not the contributions by farmers or other parties.

10.3 Power Supply in 2008, by District

Electricity	PUR	Bakan	Kandieng	Krakor	Phnom Kravanh	Pursat	Veal Veng
Total number of electricity connections to households	7,788	580	89	475	370	6,274	n/a
Total number of electricity connections to agencies, companies, organizations	n/a	n/a	n/a	n/a	n/a	n/a	n/a
Total volume in KWh of electricity consumed last in 2008	3,969,550	217,860	21,840	197,309	150,461	3,382,080	n/a
Total amount collected from users for consumed electricity (\$)	n/a	n/a	n/a	n/a	n/a	n/a	n/a
Per capita electricity consumption in 2008 in Kwh	48	63	41	69	68	90	n/a

Note 1: Please note that these data are not necessarily complete or correct. The data are derived from government agencies at provincial and district level which used different recording systems, did not always have complete data or were, sometimes, less than willing to share their data.

Note 2: These data only record electricity provided by electricity companies and does not include homes powered by generators or batteries (for this information see Section B: General Profile, Part 1: General Information; table 1.3.1 and chart 1.3.4).

Note 3: In most provinces electricity is only provided through town-based networks

Note 4: Per capita consumption is calculated by dividing the total volume of electricity produced in 2008 by the number of people living in each district as per the 2008 census (for the provincial data it is calculated against the number of people living in the province)

11 Health Facilities

Please note that the Operational District (health) boundaries are different to the administrative district boundaries. Therefore the data provided here shows the facilities, staff, NGOs etc in each Operational District within the province NOT the administrative district.

Acronyms

Com Cov	Commune Covered	MW2	Secondary Midwives
CPA	Complementary Package of Activities	NU1	Primary Nurse
Dr	Doctor	NU2	Secondary Nurse
FDH	Former District Hospital	OD	Operational District
HC	Health Center	Others	Other Staff
HC (NB)	Health Center no building	PHD	Provincial Health Department
HP	Health Post	Pop 04-05	Population Covered 2004 or 2005
MA	Medical Assistant	RH	Referral Hospital
MPA	Minimum Package of Activities	Vil Cov	Village Covered
MW1	Primary Midwives	VIL-HC	Distance from Village to Health Center

11.1 Health Facilities in the Province, by Operational District

Pursat	OD	RH	HC	HP
Bakan	1	1	10	
Sampov Meas	1		21	4
Total	2	1	31	4

11.2 Health Facilities and Staff in the province, by Operational District

This table shows health facilities, staff and coverage of health facilities in each operational district.

No	Facility Name	Type	Class	Dr	Ma	Nu2	Nu1	Mw2	Mw1	Others	Com Cov	Vil Cov	Pop. 04-05
Bakan													
1	Boeng Bat Kandaol	HC	MPA	0	0	2	0	2	0	3	1	13	10,495
2	Boeng Khnar	HC	MPA	0	0	2	0	1	0	3	1	13	12,634
3	Khmar Totueng	HC	MPA	0	0	3	1	1	1	2	1	12	9,257
4	Me Tuek	HC	MPA	0	0	2	1	0	2	7	1	15	12,978
5	Ou Ta Paong	HC	MPA	0	0	3	2	2	0	1	1	18	16,143
6	Rumlich	HC	MPA	0	0	1	1	0	1	4	1	13	8,679
7	Snam Preah	HC	MPA	0	0	3	2	4	0	0	1	20	16,510
8	Svay Daun Keo	HC	MPA	0	0	2	1	2	0	3	1	9	6,677
9	Ta Lou	HC	MPA	0	0	0	1	3	0	3	1	19	13,341

District Data Book 2009: Services and Organizations

No	Facility Name	Type	Class	Dr	Ma	Nu2	Nu1	Mw2	Mw1	Others	Com Cov	Vil Cov	Pop. 04-05
Total:				0	0	18	9	15	4	26	9	132	106,714
Sampov Meas													
1	Trapeang Chong	HC	MPA	0	0	3	0	2	0	5	1	20	19,400
2	Anlong Reab	HP	Nil	0	0	0	0	0	0	2	1	5	1,564
3	Ansa Chambak	HC	MPA	0	0	2	2	2	0	0	2	8	7,115
4	Boeng Kantuot	HC	MPA	0	0	5	2	1	1	1	4	27	16,795
5	Chheu Tom	HC	MPA	0	0	4	4	2	1	2	2	16	17,844
6	Chhouk Meas	HC	MPA	0	0	4	1	1	0	1	1	13	8,452
7	Kampong Luong	HC	MPA	0	0	5	0	0	1	0	1	5	9,797
8	Kandieng	HC	MPA	0	2	4	1	1	2	3	2	25	10,512
9	Koh Chum	HC	MPA	0	0	3	0	1	1	0	3	17	13,751
10	Krakor	FDH	MPA	0	3	12	4	2	1	4	3	32	19,901
11	Krapeu Pir	HP	NIL	0	0	0	0	0	0	1	1	3	1,052
12	Kravanh	FDH	MPA	2	0	6	6	5	5	7	3	16	18,050
13	Ou Saom	HP	NIL	0	0	0	0	0	0	2	1	4	796
14	Peal Nheak	HC	MPA	0	0	3	1	4	1	1	2	11	18,589
15	Pramaoy	HC	MPA	0	0	5	5	0	1	7	1	5	2,134
16	Preaek Tnaot	HC	MPA	0	0	3	0	2	0	1	2	16	13,233
17	Prey Nhi	HC	MPA	0	0	2	2	2	0	1	3	21	13,194
18	Prongil	HC	MPA	0	0	3	2	1	2	0	1	7	8,554
19	Reang Til	HC	MPA	0	0	2	1	0	1	4	1	5	4,436
20	Samraong	HC	MPA	0	0	3	1	1	2	0	2	14	11,744
21	Srae Sdok	HC	MPA	0	0	3	1	2	2	1	1	17	9,412
22	Sya	HC	MPA	0	0	5	1	1	3	1	2	23	15,441
23	Ta Sah	HC	MPA	0	0	5	1	1	1	1	2	16	19,779
24	Thma Da	HP	NIL	0	0	0	0	0	0	1	1	3	572
25	Voat Luong	HC	MPA	0	0	3	1	1	1	1	1	10	9,619
Total:				2	5	85	36	32	26	47	44	339	271,736
Total All				2	5	103	45	47	30	73	53	471	378,450

Source: MEDiCAM – Infrastructure - (http://www.medicam-cambodia.org/hsi/health_system/srch/index.asp?cboLcn=6&cmdSearch=Search&cboCHName=&cboType=)

11.3 Deliveries in 2007 in the Province, by Operational District

OD	Deliveries	Deliveries at home		Deliveries	Total deliveries	Total deliveries
	at HC	By Health Staff	ByTBAs	at RH	by Health Staff	by health staff and TBAs
Bakan	594	701	1292	142	1437	2729
Sampov Meas	935	2021	3135	502	3458	6593
<i>Sub-total</i>	<i>1529</i>	<i>2722</i>	<i>4427</i>	<i>644</i>	<i>4895</i>	<i>9322</i>

Source: MoH, Annual Statistics 2007

12 Education³

12.1 Schools, Classes, Students, Staff, for all levels, for 2007/2008 by District

District	Number of Schools	Disadv. Schools	Number of Classes	Classes in Pagoda	Enrollment		Repeaters		Teaching Staff		Non-Teaching Staff		Total Staff	
					Total	Girl	Total	Girl	Total	Female	Total	Female	Total	Female
Bakan	106	3	816	0	32,290	15,391	2,405	1,095	714	182	168	22	882	204
Kandieng	54	0	331	0	11,051	5,492	1,234	643	364	122	69	21	433	143
Krakor	73	1	499	0	19,291	9,224	1,474	625	479	208	121	26	600	234
Phnom Kravanh	53	2	382	2	14,770	6,898	1,177	491	336	127	83	16	419	143
Sampeuv Meas	57	0	491	0	18,192	8,570	970	374	623	285	140	55	763	340
Veal Veng	19	0	104	0	2,331	1,113	297	149	65	5	3	1	68	6
Whole Province	362	6	2,623	2	97,925	46,688	7,557	3,377	2,581	929	584	141	3,165	1,070
- Urban Area	57	0	491	0	18,192	8,570	970	374	623	285	140	55	763	340
- Rural Area	286	6	2,028	2	77,402	37,005	6,290	2,854	1,893	639	441	85	2,334	724
- Remote Area	19	0	104	0	2,331	1,113	297	149	65	5	3	1	68	6

12.2 Characteristics of Schools and School Principals for 2007/2008 by Commune

Commune	Number of Schools				2 - Shift	Floating	Schools	Attached	Schools Without		Characteristics of School Principals (Incharge)			
	Pre-Sch	Primary	College	Lycee	Schools	Schools	in Pagoda	Pre-Sch	Water Sup.	Latrine	Avg. Age	Avg. Service	U.Sec+ Ed.	Female
Bak Chenhchien	1	5	1	0	5	0	1	1	2	3	56.0	25.7	0	2
Leach	3	3	1	1	4	0	0	3	5	2	45.1	24.0	1	0
Phteah Rung	0	14	1	0	15	0	0	0	5	4	40.5	18.3	1	0
Prongil	0	5	1	0	6	0	0	0	3	2	41.9	18.7	0	0
Rokat	1	1	0	0	2	0	0	1	2	1	55.9	25.0	0	0
Santreae	1	2	1	0	2	0	0	1	3	1	42.6	22.0	0	0
Samraong	0	10	1	0	7	0	0	0	3	5	39.2	17.8	1	0

³ All the data for section 12 comes from the Ministry of Education, Youth and Sport (MoEYS)

12.3 Enrolment by Level of Education, 2006/2007 by Commune

Commune	School	Pre school		Primary School		Lower Secondary School		Upper Secondary School		Enrolment	
		Total	Female	Total	Female	Total	Female	Total	Female	Total	Female
Bak Chenhchien	7	30	17	1616	770	617	265	0	0	2263	1052
Leach	8	180	79	1603	787	1166	541	488	177	3437	1584
Phteah Rung	15	0	0	3866	1798	571	247	0	0	4437	2045
Prongil	6	0	0	1744	796	137	55	0	0	1881	851
Rokat	2	59	27	623	304	0	0	0	0	682	331
Santreae	3	55	25	681	333	0	0	0	0	736	358
Samraong	11	0	0	2131	1058	140	52	0	0	2271	1110

12.4 Enrolment by Level of Education, 2007/2008 by Commune

Commune	School	Pre school		Primary School		Lower Secondary School		Upper Secondary School		Enrolment	
		Total	Female	Total	Female	Total	Female	Total	Female	Total	Female
Bak Chenhchien	7	30	14	1458	696	583	274	0	0	2071	984
Leach	8	134	59	1527	729	1032	464	613	239	3306	1491
Phteah Rung	15	0	0	3415	1577	639	287	0	0	4054	1864
Prongil	6	0	0	1682	786	227	102	0	0	1909	888
Rokat	2	32	18	502	245	0	0	0	0	534	263
Santreae	4	59	30	632	316	70	41	0	0	761	387
Samraong	11	0	0	1901	917	234	104	0	0	2135	1021

12.5 Aspects of Enrolment for 2007/2008 by Commune

Commune	% Repeaters (Total)			% Over-age Enrollment (Total)			% Repeaters (Girl)			% Over-age Enrollment (Girl)		
	Primary	L.Sec.	U.Sec.	Primary	L.Sec.	U.Sec.	Primary	L.Sec.	U.Sec.	Primary	L.Sec.	U.Sec.
Bak Chenhchien	11.5	0.0	0.0	24.4	52.7	0.0	10.8	0.0	0.0	24.1	51.8	0.0
Leach	12.0	1.5	10.3	25.1	69.8	60.8	11.4	0.9	5.9	23.0	69.4	52.3
Phteah Rung	7.7	0.0	0.0	23.7	59.9	0.0	7.2	0.0	0.0	23.3	61.3	0.0
Prongil	9.2	0.0	0.0	15.3	45.8	0.0	8.9	0.0	0.0	16.2	40.2	0.0
Rokat	7.4	0.0	0.0	32.3	0.0	0.0	7.3	0.0	0.0	35.1	0.0	0.0
Santreae	7.1	0.0	0.0	11.7	30.0	0.0	6.6	0.0	0.0	13.6	34.1	0.0
Samraong	13.1	0.0	0.0	27.8	44.9	0.0	10.0	0.0	0.0	29.2	35.6	0.0

12.6 School Buildings for all schools in the District for 2007/2008, by Commune

Commune	Total Number of		Concrete/Brick Structure		Wooden Structure		Bamboo Structure		New Buildings		Buildings Without Good		
	Buildings	Rooms	Buildings	Rooms	Buildings	Rooms	Buildings	Rooms	Repaired	Constructed	Floor	Roof	Wall
Bak Chenhchien	15	59	8	44	6	14	1	1	1	3	0	0	0
Leach	18	88	12	61	6	27	0	0	0	0	0	0	1
Phteah Rung	23	100	11	52	12	48	0	0	0	4	3	7	7
Prongil	12	45	4	20	8	25	0	0	0	0	2	2	3
Rokat	4	15	2	7	2	8	0	0	0	2	0	0	2
Santreae	6	18	1	5	5	13	0	0	0	0	1	1	1
Samraong	20	70	10	47	10	23	0	0	0	3	2	1	4

12.7 Conditions of Classrooms and Existence of Separate School Office and Library, by Commune

Commune	Number of Class rooms	Number of Classrooms			Classrooms Without Good			Number of Furniture needed				Schools with Separate	
		in Pagoda	New Repaired	New Constr.	Floor	Roof	Wall	Desks	Chairs	Black-board	Teacher Table	Office	Library
Bak Chenhchien	39	0	1	15	0	0	0	0	0	0	0	4	2
Leach	69	0	0	0	0	0	3	0	0	5	10	4	3
Phteah Rung	65	2	0	19	11	30	24	20	0	0	2	7	4
Prongil	32	0	0	0	5	9	12	30	1	0	1	4	2
Rokat	11	0	0	7	0	0	6	0	0	0	0	1	1
Santreae	14	0	0	0	2	2	2	0	0	0	2	1	0
Samraong	42	0	0	9	5	3	9	11	0	1	2	5	2

12.8 Community Participation and Financing across all schools in the District for 2007/2008 by Commune

Commune	Parent Association				Comm. Teachers	Teaching Monks	PAP Fund (Riel)		Number of Schools Obtaining Funds from				
	Exists	Held Meet	Total	Female			per Student	per School	Sch. Income	Community	Gvt. For building	Abroad	IOs/NGOs
Bak Chenhchien	6	6	5	2	0	0	16,020	5,110,343	0	2	0	0	0
Leach	5	5	10	1	0	0	11,586	5,390,971	0	1	0	0	0
Phteah Rung	15	15	6	1	0	0	8,470	2,399,723	0	6	0	0	0
Prongil	6	5	6	1	0	0	10,292	3,589,880	0	3	0	1	0
Rokat	1	1	5	0	0	0	8,120	5,059,000	0	0	0	0	0
Santreae	4	3	4	1	0	0	7,475	2,545,200	0	0	0	0	0
Samraong	9	9	5	1	0	0	9,346	2,245,425	0	0	1	0	0

12.9 Percentage Student Flow Rates and Graduation by level 2006/2007, by Commune

Commune	Primary Level (Grades 1-6)			Lower Secondary Level (Grades 7-9)			Upper Secondary Level (Grades 10-12)			Successful Candidates		
	Promotion	Repetition	Dropout	Promotion	Repetition	Dropout	Promotion	Repetition	Dropout	Grade 6	Grade 9	Grade 12
Bak Chenhchien	74.8	10.3	14.9	70.7	0.0	29.3	0.0	0.0	0.0	184	94	0
Leach	80.2	11.4	8.4	80.4	1.3	18.4	74.4	12.9	12.7	188	229	72
Phteah Rung	75.8	6.8	17.4	75.3	0.0	24.7	0.0	0.0	0.0	403	61	0
Prongil	79.2	8.9	11.9	67.9	0.0	32.1	0.0	0.0	0.0	182	0	0
Rokat	72.1	5.9	22.0	0.0	0.0	0.0	0.0	0.0	0.0	74	0	0
Santreae	71.2	6.6	22.2	0.0	0.0	0.0	0.0	0.0	0.0	61	0	0
Samraong	69.4	11.7	18.9	78.6	0.0	21.4	0.0	0.0	0.0	211	0	0

13 Staff and Resources at the District

This chapter presents data from the District Information System, collected around the middle of 2009 unless otherwise specified.

13.1 District Councilors elected in 2009

Name	Sex	Year of Birth	Function	Phone
សោម វិសាល	M	1955	Chairperson of The Council	012-912 546
នង ចំណាន	M	1951	Councillor	012-536 145
ឈឹម ស្ប៉ុន	M	1960	Councillor	097-996 5464
នង ឡែហ៊ាម	F	1951	Councillor	
ម៉ែ ផាន់	M	1941	Councillor	011-466 934
ទេព ស៊ី	M	1947	Councillor	092-976 461
ថោង វេង	M	1947	Councillor	
អ៊ុយ ឡេង	M	1947	Councillor	012-268 180
គឹម រី	M	1949	Councillor	092-621 606
ហៀវ ហាក់	M	1968	Councillor	092-812 935
ឈឹម ណឹម	M	1953	Councillor	012-329 517
វ៉ាត់ ប៊ុនណា	M	1944	Councillor	
ប៊ុន សំអាន	M	1964	Councillor	011-596 200
សែម សុផុន	M	1977	Councillor	012-536 684
ថុច ថាន	M	1954	Councillor	092-437 532

13.2 Committees of the Council

Please note at the time of producing the district data books the composition of the committees was not known for all district councils and therefore data were not available for 13.2.1, 13.2.2, 13.2.3.

13.2.1 Technical Facilitation Committee

13.2.2 Women's and Children's Affairs Committee

13.2.3 Procurement Committee

13.3 Board of Governors

Name	Sex	DoB	Function	Salary Level	Body	Phone
ទ្រូង សំបួរ	M	1953	District Governor	ក៣.៦	High Ranking Civil Servant	012-463 845
ម៉ម សារ៉ាត់	M	1957	District Deputy Governor	ខ២.៤	Medium Civil Servant	012-321 135
ស៊ី សារ៉ូ	F	1956	District Deputy Governor	ខ៣.៣	Medium Civil Servant	092-899 514
ជា សុខជាតិ	M	1964	District Deputy Governor	ឃ៣.១១	Administrative Agent	089-716 229

13.4 Offices under Sala Krong, Sala Srok and Sala Khan

Office Name	Chief		Deputy Chief		No. of Staff				Office Area (m2)	No of vehicle (public or program)	
					State		Contract			vehicle	moto
	M	F	M	F	M	F	M	F			
District/ Khan Cabinet	1	0	0	0	0	0	0	0	289.44	0	0
Adminnistration Office	1	0	0	1	2	2	2	0	0	0	0
Economy Office	1	0	1	0	1	0	0	0	0	0	1
Social Affair Office	1	0	1	0	1	0	0	0	0	0	0

13.5 Municipality/District/Khan line offices

Office Name	Chief		Deputy Chief		No. of Staff				Office Area (m2)	No of vehicle (public or program)	
					State		Contract				
	M	F	M	F	M	F	M	F		vehicle	moto
District/ Khan Police Headquarter	1	0	5	0	112	5	0	0	119	0	8
District/ Khan Military Police Headquarter	1	0	4	0	3	0	0	0	144	0	0
District/ Khan Military Subregion	1	0	2	0	14	0	0	0	30	0	0
Planning Office	1	0	1	0	0	1	0	0	Borrow	0	1
Women Affairs Office	0	1	0	1	0	0	0	1	Borrow	0	0
Environment Office	1	0	0	0	0	0	1	0	Borrow	0	0
Education Office	1	0	2	0	301	150	0	0	184	0	1
Agriculture Office	0	0	0	0	9	3	0	0	136.5	0	2
Social Affairs Office	1	0	1	1	0	0	1	1	Borrow	0	0
Culture Office	0	0	0	0	2	0	0	0	Borrow	0	0
Information Office	0	1	0	0	0	2	0	0	20	0	0
Public Work Office	1	0	0	0	2	0	0	0	Borrow	0	0
Post Office	0	0	0	0	0	1	0	0	30	0	0
Lan Management Office	1	0	0	0	0	0	0	0	204	0	0
Tax Unit	1	0	1	0	1	0	0	0	64	0	0
Industry Office	1	0	0	0	0	0	0	0	Borrow	0	0
Water Resources Office	1	0	0	0	0	0	0	0	Borrow	0	0
Forestry Administration Sangkat	1	0	1	0	15	0	0	0	54	0	3

13.6 Properties and Equipment of District Administration

13.6.1 Buildings

Description	Unit	Number	Remark
Office building type			
- Concrete	building	1	
- Wood	building	0	
- Mixed	building	0	
Total floor space	m2		
- Concrete	m2	289.44	
- Wood	m2	0	
- Mixed	m2	0	
Building condition			
- Concrete	%	0	
- Wood	%	0	
- Mixed	%	0	
Office reserved land area	m2	0	
Total office land area	m2	2,915	

13.6.2 Means of Transport available at the District Administration

Description	Unit	Number	Remark
Vehicle (type, size and condition)	Vehicle	0	
Motorcycle (type, size and condition)	Motor	2	

13.6.3 Equipment in District Offices

Description	Unit	Number	Remark
Generator	per set	0	
Photocopy machine at the office	per set	0	
Private photocopy machine at the district town	place	1	
Telephone network (mobile line service)	network	4	
Telephone network (land line service)	network	0	
Fax (include Fax number)	per set	0	
Computer	per set	1	
Printer	per set	1	
Scanner	Per set	0	
Number of computers those can access Internet and email services in the municipality/ district/khan office (including the technical line offices (please provide the email address)	set	0	
Typewriters (including the technical line offices)	per set	1	
Staff of Municipality/district/khan office can use computer	person	2	

13.6.4 Equipment and facilities at the District Town

Description	Unit	Number	Remark
Availability of electricity at noon	Nr Hours	12	
Private internet and email services in the municipality/ district/khan town.	place	0	

13.7 Registered Revenue of the District Administration in 2008⁴

⁴ Please note that the data in this table are at best estimates. If the table appears blank it does not mean there is no revenue, just that the data have not been recorded/entered.

13.8 Services in the District

13.8.1 Public Sector Services

Type of Infrastructure/services	Unit	Number	
		Public	Private
Schools			
Pre-school	room	9	0
Primary School	room	229	0
Secondary school	room	43	0
High School	room	26	0
University	room		
Health			
Health post	place		
Health center	place	4	0
Referral Hospital	bed		

13.9 Civil Society Organizations active in the District

13.9.1 NGOs, Associations, Programs and Projects

Name	Abbr.	Sector Activities	No. of Target Communes	No. of Target Villages	Office in District
NA	SC	អភិរក្សធនធានធម្មជាតិ	2	6	Yes
NA	AK	អភិវឌ្ឍន៍សហគមន៍	7	32	Yes
NA	CDOC	កសិកម្ម អប់រំ	7	53	Yes
Lutheran World Federation	LWF	អភិវឌ្ឍន៍ជនបទចំរុះ	7	26	Yes
PRASAC	PRASAC	ឥណទាន	1	4	Yes

13.9.2 Political Parties active in the Municipality, District and Khan

Name	Abbr.	Office in District
Cambodian People Party	CPP	Yes
FUNCINPEC Party	FUNCINPEC	Yes
NA	NA	No
NRP	NRP	Yes
SAM RAINSY Party	Sam Rainsy Party	Yes

13.10 Private Sector Organizations

13.10.1 Registered Companies in 2008, by District

On private sector at commune and/or district level	PUR	Bakan	Kandieng	Krakor	Phnom Kravanh	Pursat	Veal Veng
Businesses and Companies							
Number of registered agricultural enterprises (except family farms)	2	1	0	1	0	0	0
Number of registered shops, restaurants, transporters and other services	22	2	1	10	2	7	0
Number of manufacturing companies	49	31	9	0	1	8	0
Number of registered forestry enterprises	-	0	0	0	0	0	0
Number of registered mining companies	9	0	0	0	2	7	0
Number of fin/ancial institutions	32	10	3	6	4	9	0
Number of other commercial institutions	329	168	0	2	0	158	1
Estimated number of informal enterprises (not registered)	1,525	71	34	129	87	1,204	n/a
Employment							
Number of people employed in 2008 by companies or any other enterprises	784	121	17	39	18	589	n/a
Investment							
Amount invested in 2008 by private sector (\$)	n/a	n/a	n/a	n/a	n/a	n/a	n/a
Markets							
Number of markets, operating at least weekly	40	13	5	11	7	3	1

Note: These data are not comprehensive as different companies and business are registered with different departments and not all departments were able or willing to provide detailed information. The number of informal enterprises reflects a rough estimate, made at provincial level and could not be verified.

Source: Unofficially collected at Provincial Level

13.10.2 Farmers in 2008, by District

Credit	PUR	Bakan	Kandieng	Krakor	Phnom Kravanh	Pursat	Veal Veng
Volume of credit provided to farmers in 2008 (\$)	9,768,185	4,277,848	860,941	1,391,107	1,333,649	1,557,268	347,372
Number of farmers receiving credit in 2008	19,357	8,054	1,721	3,567	2,286	3,228	501
Volume of credit provided to companies in 2008 (\$)	2,924,622	400,000	252,461	758,889	379,449	885,370	248,453

Note: Please note that these data are not necessarily complete or correct. The data are derived from government agencies at provincial and district level which used different recording systems, did not always have complete data or were, sometimes, less than willing to share their data.

Source: Unofficially collected at Provincial Level

SECTION E: POVERTY DATA

14 Data on Poverty

14.1 Predicted Poverty Rates for 2009, by commune

The **Predicted Family Poverty Rate** is based on a statistical model (robust multilevel mixed effect regression) at village level developed by the NCDD M&E Unit and uses CDB data for making an estimate of the predicted poverty rate (this is: *the portion of total families in the district or commune who are expected to be poor*) for the following year using current year data.

The basis for this predicted poverty rate also uses IDPoor (a project of the Ministry of Planning with technical assistance provided by GTZ) data

Commune	2004	2009
Bak Chenhchien	41%	36.90%
Leach	36.60%	28.20%
Phteah Rung	42.10%	36.30%
Prongil	42.90%	41.20%
Rokat	42%	36%
Santreae	45.60%	38.10%
Samraong	45.80%	41.30%

14.2 Poverty data from survey

14.2.1 Identification of Poor Households Program (IDPoor)

The Ministry of Planning IDPoor Program has developed standardized Procedures for Identification of Poor Households in rural areas. These Procedures are implemented using a participatory and consultative process by sub-national government structures and community representatives.

The IDPoor Program is managed by the Ministry of Planning (MOP), in cooperation with the Ministry of Interior's Department of Local Administration (DOLA). The program is supported by the Federal Republic of Germany, with technical assistance provided by German Technical Cooperation (GTZ). In 2009, AusAID also provided funding support to the Program.

Objective

The IDPoor Program aims to implement the Procedures for Identification of Poor Households in rural areas as widely as possible, in order to provide data on the level of poverty of areas and households that can be used by a large range of institutions and organizations for targeting services and development assistance to poor areas and poor households.

Coverage: During 2007, 2008 and 2009 the IDPoor Procedures have been implemented in 18 provinces (with partial or complete coverage), covering a total of around 7000 rural villages. The MOP and a number of NGO partners who are Health Equity Fund Operators have collaborated in collecting this data from different areas.

Categorization: Identified poor households are classified under two poverty categories: Poor Level 1 (very poor), and Poor Level 2 (poor). Households are classified based on data collected using a standard questionnaire, together with consideration by villagers of these households' special circumstances.

Further information: Please go to the IDPoor Program webpage at www.mop.gov.kh/Projects/IDPoor/tabid/154/Default.aspx

This District has not yet been covered by IDPoor